

RAB20 RABBIT PAB

货号: S211467

产品全名: RAB20 兔多抗

基因符号

UNIPROT ID: Q9NX57 (Gene Accession - BC026025)

背景: Plays a role in apical endocytosis/recycling. Plays a role in the maturation and acidification of phagosomes that engulf pathogens, such as *S.aureus* and *M.tuberculosis*. Plays a role in the fusion of phagosomes with lysosomes.

抗原: Fusion protein of human RAB20

经过测试的应用: ELISA, WB, IHC

推荐稀释比: IHC: 50-100;WB: 500-2000;ELISA: 5000-10000

种属反应性: Rabbit

克隆性: Rabbit Polyclonal

亚型: Immunogen-specific rabbit IgG

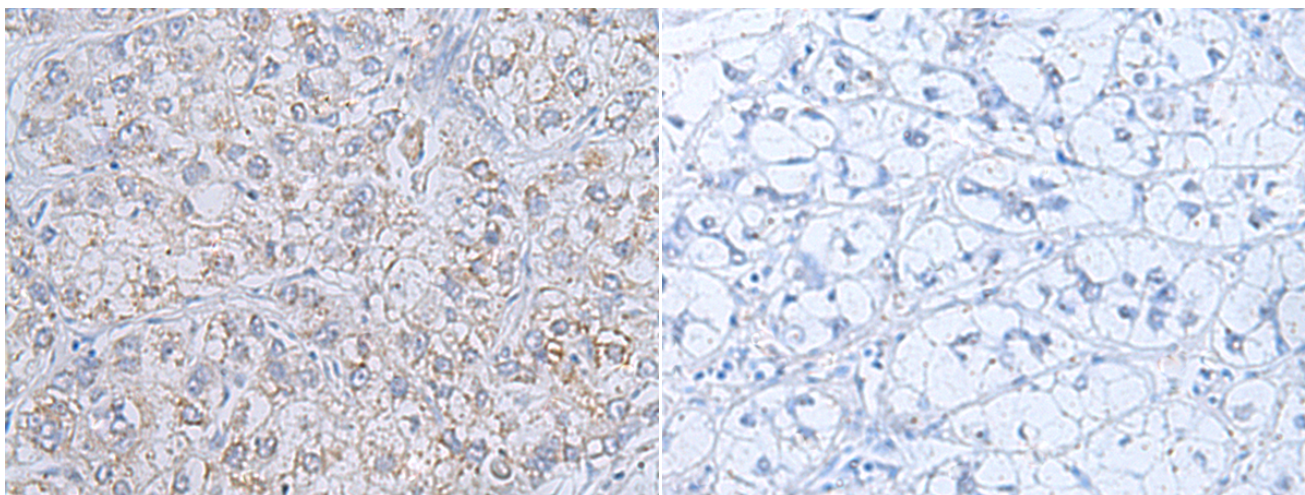
纯化: Antigen affinity purification

种属反应性: Human, Mouse

成分: PBS (without Mg²⁺ and Ca²⁺), pH 7.4, 150 mM NaCl, 0.05% Sodium Azide and 40% glycerol

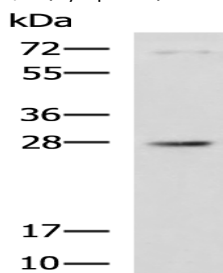
研究领域: Signal Transduction

储存和运输: Store at -20°C. Avoid repeated freezing and thawing



Immunohistochemistry analysis of paraffin embedded Human liver cancer tissue using 211467(RAB20 Antibody) at a dilution of 1/70(Cytoplasm).

In comparison with the IHC on the left, the same paraffin-embedded Human liver cancer tissue is first treated with the fusion protein and then with 211467(Anti-RAB20 Antibody) at dilution 1/70.



Gel: 12%SDS-PAGE, Lysate: 40 µg;

Lane: 231 cell lysate;

Primary antibody: 211467(RAB20 Antibody) at dilution 1/1000;

Secondary antibody: HRP-conjugated Goat anti rabbit IgG at 1/5000 dilution;

Exposure time: 1 minute