

RAB18 RABBIT PAB

Cat.#: S219624

Product Name: Anti-RAB18 Rabbit Polyclonal Antibody

Synonyms: WARBM3, RAB18LI1

UNIPROT ID: Q9NP72 (Gene Accession - NP_067075)

Background: The protein encoded by this gene is a member of a family of Ras-related small GTPases that regulate membrane trafficking in organelles and transport vesicles. Knockdown studies in zebrafish suggest that this protein may have a role in eye and brain development. Mutations in this gene are associated with Warburg micro syndrome type 3. Alternatively spliced transcript variants have been found for this gene.

Immunogen: Synthetic peptide of human RAB18

Applications: ELISA, WB, IHC

Recommended Dilutions: IHC: 200-500;WB: 500-2000;ELISA: 2000-10000

Host Species: Rabbit

Clonality: Rabbit Polyclonal

Isotype: Immunogen-specific rabbit IgG

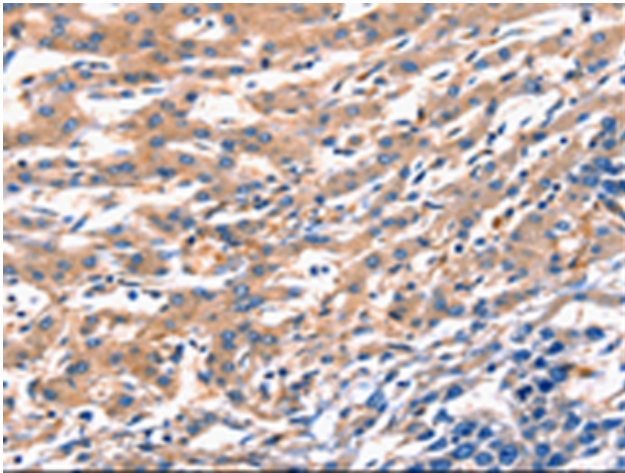
Purification: Antigen affinity purification

Species Reactivity: Human, Mouse, Rat

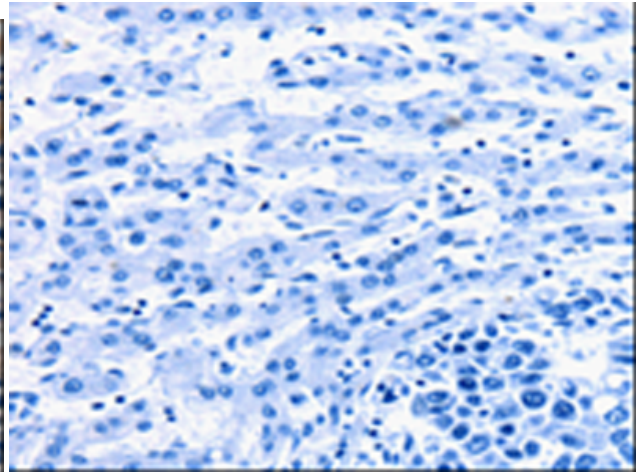
Constituents: PBS (without Mg²⁺ and Ca²⁺), pH 7.4, 150 mM NaCl, 0.05% Sodium Azide and 40% glycerol

Research Areas: Signal Transduction

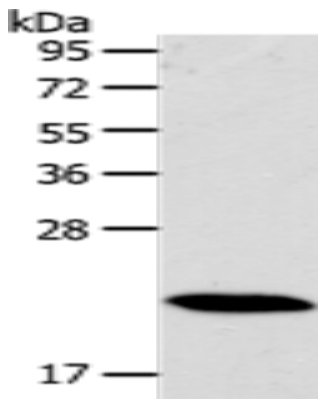
Storage & Shipping: Store at -20°C. Avoid repeated freezing and thawing



Immunohistochemistry analysis of paraffin embedded Human liver cancer tissue using 219624(RAB18 Antibody) at a dilution of 1/300(Cytoplasm).



In comparison with the IHC on the left, the same paraffin-embedded Human liver cancer tissue is first treated with the synthetic peptide and then with 219624(Anti-RAB18 Antibody) at dilution 1/300.



Gel: 10%SDS-PAGE, Lysate: 40 µg;
Lane: Mouse heart tissue;
Primary antibody: 219624(RAB18 Antibody) at dilution 1/400;
Secondary antibody: Goat anti rabbit IgG at 1/8000 dilution;
Exposure time: 1 second