

RAB11A RABBIT PAB

货号: S218176

产品全名: RAB11A 兔多抗

基因符号 YL8

UNIPROT ID: P62491 (Gene Accession - BC013348)

背景: The protein encoded by this gene belongs to the Rab family of the small GTPase superfamily. It is associated with both constitutive and regulated secretory pathways, and may be involved in protein transport. Two transcript variants encoding different isoforms have been found for this gene.

抗原: Full length fusion 蛋白

经过测试的应用: ELISA, WB, IHC

推荐稀释比: IHC: 25-100;WB: 500-2000;ELISA: 5000-10000

种属反应性: Rabbit

克隆性: Rabbit Polyclonal

亚型: Immunogen-specific rabbit IgG

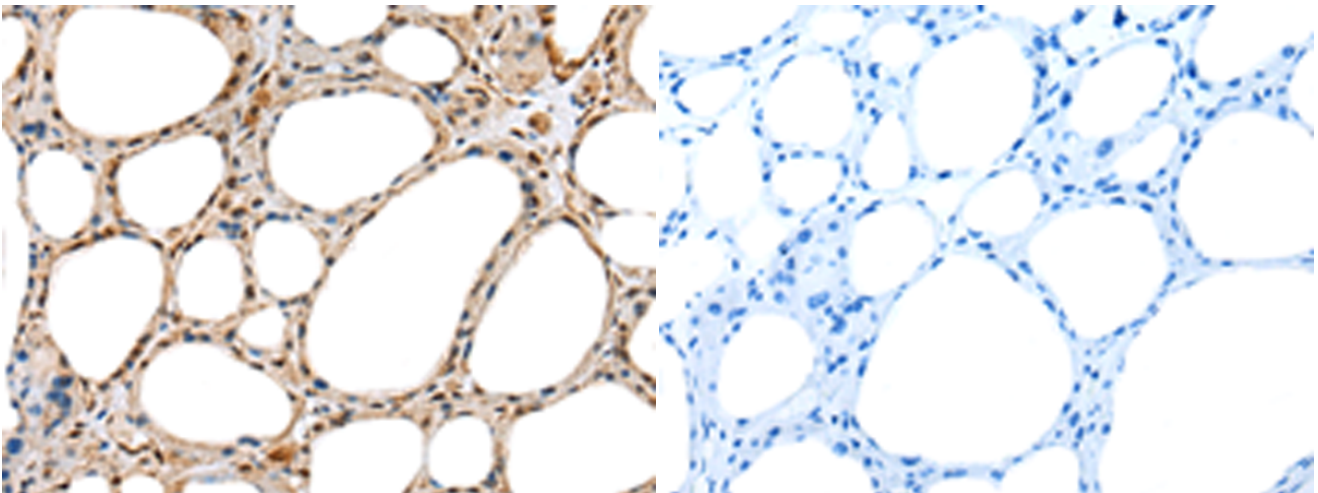
纯化: Antigen affinity purification

种属反应性: Human, Mouse, Rat

成分: PBS (without Mg²⁺ and Ca²⁺), pH 7.4, 150 mM NaCl, 0.05% Sodium Azide and 40% glycerol

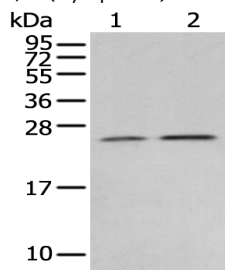
研究领域: Signal Transduction

储存和运输: Store at -20°C. Avoid repeated freezing and thawing



Immunohistochemistry analysis of paraffin embedded Human thyroid cancer tissue using 218176(RAB11A Antibody) at a dilution of 1/35(Cytoplasm).

In comparison with the IHC on the left, the same paraffin-embedded Human thyroid cancer tissue is first treated with the fusion protein and then with 218176(Anti-RAB11A Antibody) at dilution 1/35.



Gel: 12%SDS-PAGE, Lysate: 40 µg;
Lane 1-2: Human fetal brain tissue, 231 cell;
Primary antibody: 218176(RAB11A Antibody) at dilution 1/400;
Secondary antibody: Goat anti rabbit IgG at 1/8000 dilution;
Exposure time: 5 seconds