

## R3HCC1L RABBIT PAB

货号: S220571

产品全名: R3HCC1L 兔多抗

基因符号 PSORT; GIDRP86; GIDRP88; C10orf28

**UNIPROT ID:** Q7Z5L2 (Gene Accession - NP\_001243548 )

**背景:** C10orf28 (chromosome 10 open reading frame 28), also known as GIDRP88 (growth inhibition and differentiation-related protein 88) or putative mitochondrial space protein 32.1, is a 792 amino acid protein that exists as three alternatively spliced isoforms. The gene encoding C10orf28 maps to human chromosome 10, which spans nearly 135 million base pairs, makes up approximately 4.5% of total DNA in cells and encodes nearly 1,200 genes. Several protein-coding genes, including those that encode for chemokines, cadherins, excision repair proteins, early growth response factors (Egrs) and fibroblast growth receptors (FGFRs), are located on chromosome 10. Defects in some of the genes that map to chromosome 10 are associated with Charcot-Marie Tooth disease, Jackson-Weiss syndrome, Usher syndrome, nonsyndromic deafness, Wolman's syndrome, Cowden syndrome, multiple endocrine neoplasia type 2 and porphyria.

**抗原:** Synthetic peptide of human R3HCC1L

**经过测试的应用:** ELISA, IHC

**推荐稀释比:** IHC: 50-200; ELISA: 2000-5000

**种属反应性:** Rabbit

**克隆性:** Rabbit Polyclonal

**亚型:** Immunogen-specific rabbit IgG

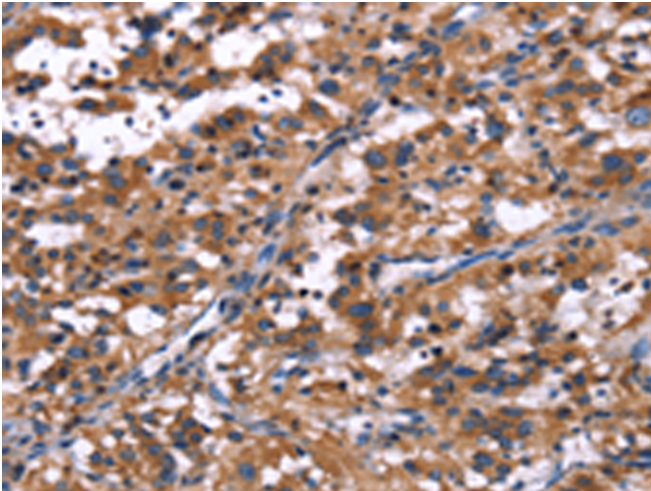
**纯化:** Antigen affinity purification

**种属反应性:** Human, Mouse

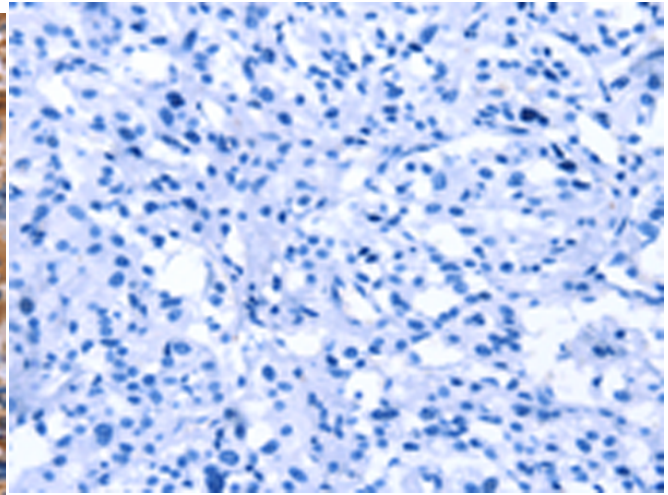
**成分:** PBS (without Mg<sup>2+</sup> and Ca<sup>2+</sup>), pH 7.4, 150 mM NaCl, 0.05% Sodium Azide and 40% glycerol

**研究领域:** Cell Biology

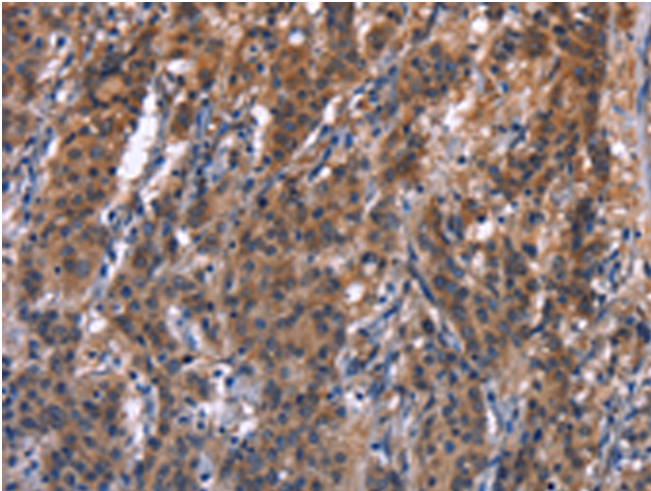
**储存和运输:** Store at -20°C. Avoid repeated freezing and thawing



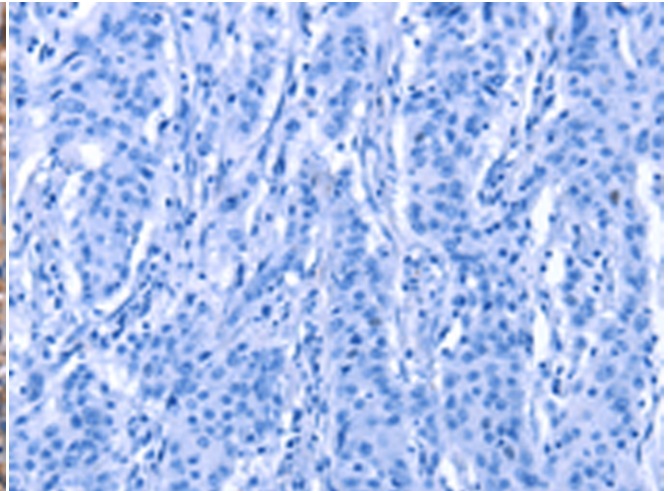
Immunohistochemistry analysis of paraffin embedded Human thyroid cancer tissue using 220571(R3HCC1L Antibody) at a dilution of 1/40(Cytoplasm).



In comparison with the IHC on the left, the same paraffin-embedded Human thyroid cancer tissue is first treated with the synthetic peptide and then with 220571(Anti-R3HCC1L Antibody) at dilution 1/40.



The image on the left is immunohistochemistry of paraffin-embedded Human gastric cancer tissue using 220571(Anti-R3HCC1L Antibody) at a dilution of 1/40.



In comparison with the IHC on the left, the same paraffin-embedded Human gastric cancer tissue is first treated with synthetic peptide and then with D261709(Anti-R3HCC1L Antibody) at dilution 1/40.