

PYROPHOSPHATASE 1 RABBIT MAB

货号: N262789

产品全名: Pyrophosphatase 1 兔单克隆抗体

基因符号 PP; PPI; IOPPP; HEL-S-66p; SID6-8061

UNIPROT ID: Q15181

背景: The protein encoded by this gene is a member of the inorganic pyrophosphatase (PPase) family. PPases catalyze the hydrolysis of pyrophosphate to inorganic phosphate, which is important for the phosphate metabolism of cells. Studies of a similar protein in bovine suggested a cytoplasmic localization of this enzyme.

抗原: A synthetic peptide of human Pyrophosphatase 1

经过测试的应用: WB,IP

推荐稀释比: WB: 1/500-1/1000 IP: 1/20

种属反应性: Rabbit

克隆性: Rabbit Monoclonal

克隆编号: R01-3E6

分子量: Calculated MW: 33 kDa; Observed MW: 33 kDa

亚型: IgG

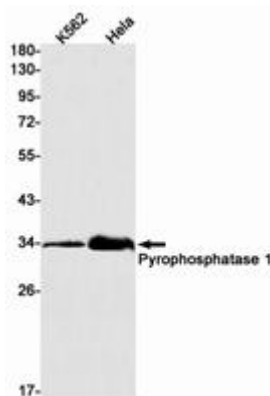
纯化: Affinity Purified

种属反应性: Human,Mouse

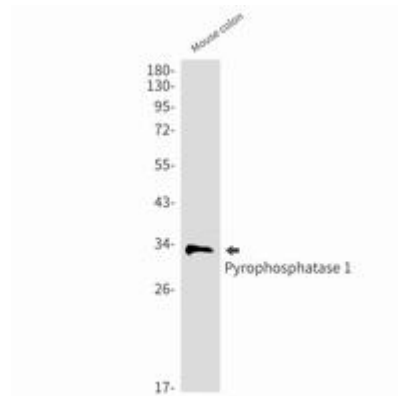
成分: PBS (without Mg²⁺ and Ca²⁺), pH 7.3 containing 50% glycerol, 0.5% BSA and 0.02% sodium azide

研究领域: Signal Transduction

储存和运输: Store at -20°C. Avoid repeated freezing and thawing



Western blot analysis of Pyrophosphatase 1 in K562, HeLa lysates using Pyrophosphatase 1 antibody.



Western blot analysis of Pyrophosphatase 1 in mouse colon lysates using Pyrophosphatase 1 antibody.