

PYM1 RABBIT PAB

货号: S215310

产品全名: PYM1 兔多抗

基因符号: PYM; WIBG

UNIPROT ID: Q9BRP8 (Gene Accession - NP_115721)

背景: Enables ribosome binding activity. Involved in exon-exon junction complex disassembly; nuclear-transcribed mRNA catabolic process, nonsense-mediated decay; and positive regulation of translation. Located in cell junction; cytosol; and nuclear lumen. Part of exon-exon junction complex. [provided by Alliance of Genome Resources, Apr 2022]

抗原: Synthetic peptide of human PYM1

经过测试的应用: ELISA, IHC

推荐稀释比: IHC: 50-100; ELISA: 5000-10000

种属反应性: Rabbit

克隆性: Rabbit Polyclonal

亚型: Immunogen-specific rabbit IgG

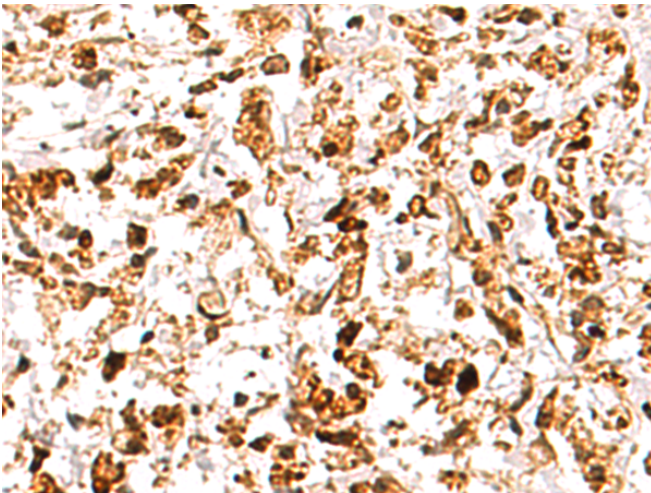
纯化: Antigen affinity purification

种属反应性: Human, Mouse

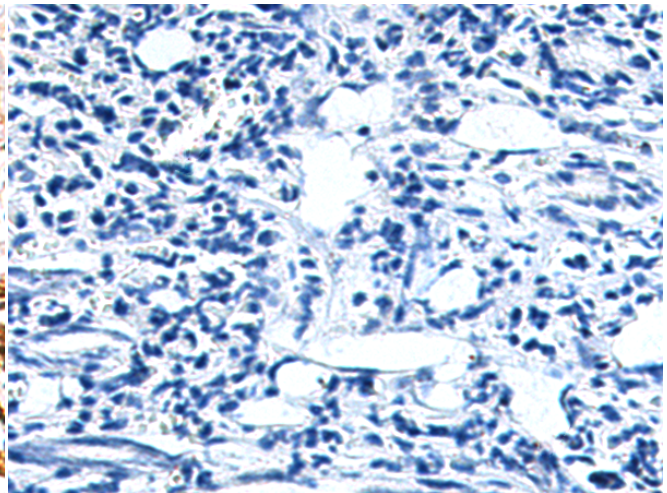
成分: PBS (without Mg²⁺ and Ca²⁺), pH 7.4, 150 mM NaCl, 0.05% Sodium Azide and 40% glycerol

研究领域: Epigenetics and Nuclear Signaling

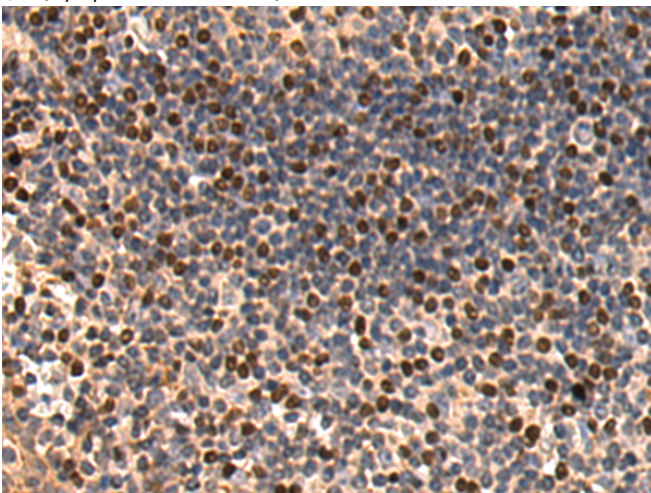
储存和运输: Store at -20°C. Avoid repeated freezing and thawing



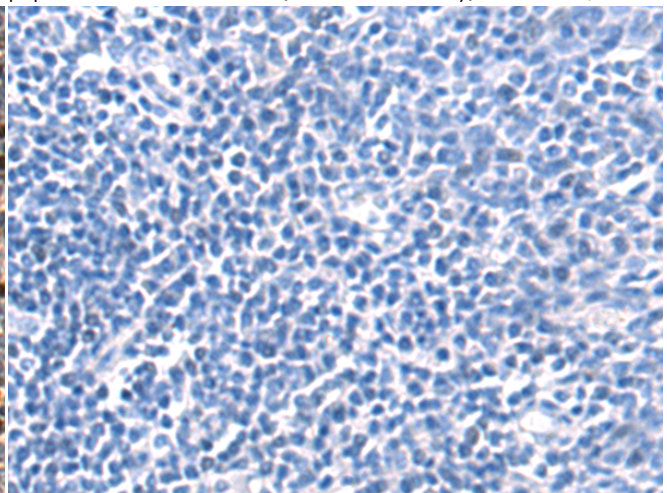
Immunohistochemistry analysis of paraffin embedded Human gastric cancer tissue using 215310(PYM1 Antibody) at a dilution of 1/30(Cytoplasm and Nucleus).



In comparison with the IHC on the left, the same paraffin-embedded Human gastric cancer tissue is first treated with the synthetic peptide and then with 215310(Anti-PYM1 Antibody) at dilution 1/30.



The image on the left is immunohistochemistry of paraffin-embedded Human tonsil tissue using 215310(Anti-PYM1 Antibody) at a dilution of 1/30.



In comparison with the IHC on the left, the same paraffin-embedded Human tonsil tissue is first treated with synthetic peptide and then with D163193(Anti-PYM1 Antibody) at dilution 1/30.



Product Description

Pioneering GTPase and Oncogene Product Development since 2010
