

PYCARD RABBIT PAB

货号: S213302

产品全名: PYCARD 兔多抗

基因符号: ASC; TMS; TMS1; CARD5; TMS-1

UNIPROT ID: Q9ULZ3

背景: This gene encodes an adaptor protein that is composed of two protein-protein interaction domains: a N-terminal PYRIN-PAAD-DAPIN domain (PYD) and a C-terminal caspase-recruitment domain (CARD). The PYD and CARD domains are members of the six-helix bundle death domain-fold superfamily that mediates assembly of large signaling complexes in the inflammatory and apoptotic signaling pathways via the activation of caspase. In normal cells, this protein is localized to the cytoplasm; however, in cells undergoing apoptosis, it forms ball-like aggregates near the nuclear periphery. Two transcript variants encoding different isoforms have been found for this gene.

抗原: Fusion protein of human PYCARD

经过测试的应用: ELISA, WB, IHC

推荐稀释比: IHC: 50-200;WB: 500-2000;ELISA: 5000-10000

种属反应性: Rabbit

克隆性: Rabbit Polyclonal

亚型: Immunogen-specific rabbit IgG

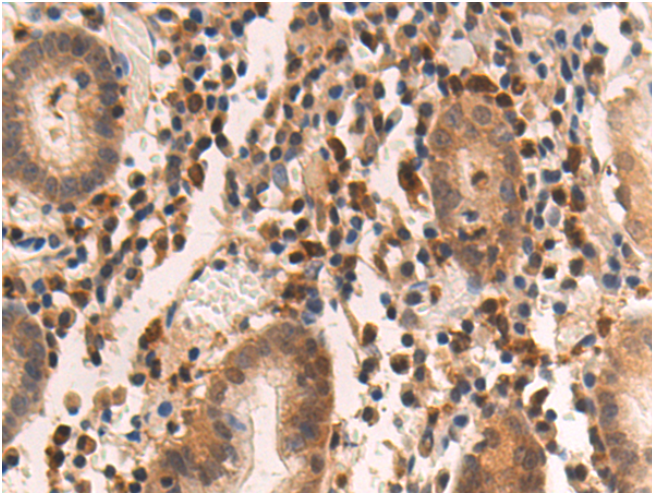
纯化: Antigen affinity purification

种属反应性: Human, Mouse

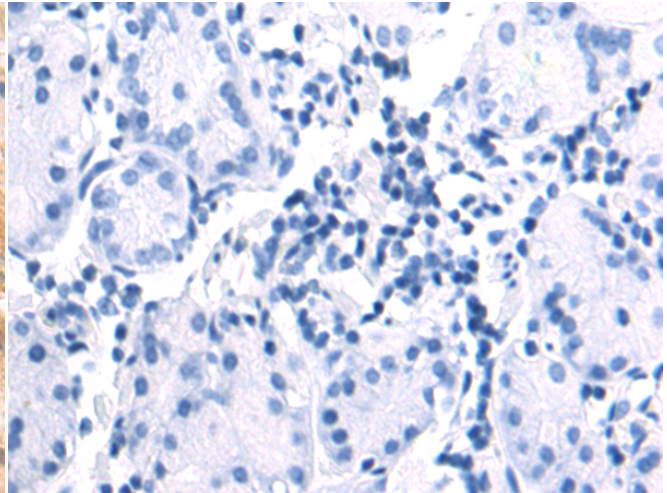
成分: PBS (without Mg²⁺ and Ca²⁺), pH 7.4, 150 mM NaCl, 0.05% Sodium Azide and 40% glycerol

研究领域: Cancer

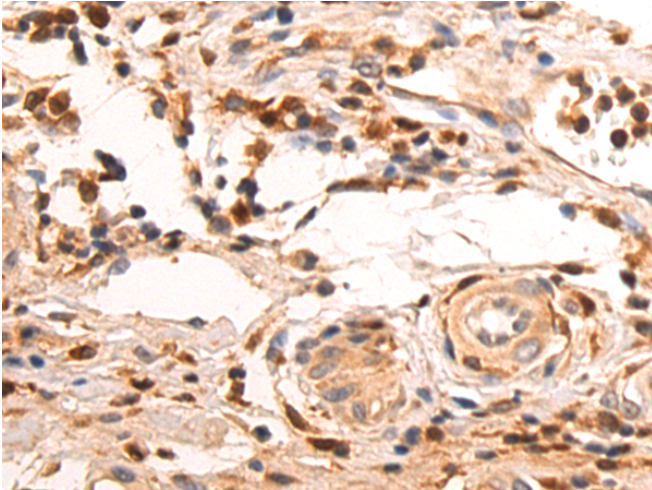
储存和运输: Store at -20°C. Avoid repeated freezing and thawing



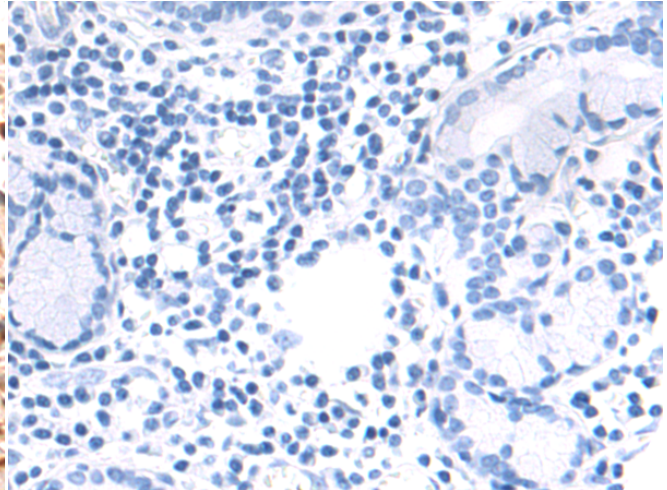
Immunohistochemistry analysis of paraffin embedded Human gastric cancer tissue using 213302(PYCARD Antibody) at a dilution of 1/60(Cytoplasm and Nucleus).



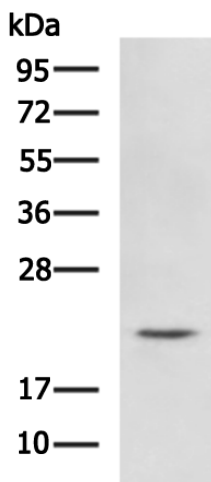
In comparison with the IHC on the left, the same paraffin-embedded Human gastric cancer tissue is first treated with the fusion protein and then with 213302(Anti-PYCARD Antibody) at dilution 1/60.



The image on the left is immunohistochemistry of paraffin-embedded Human esophagus cancer tissue using 213302(Anti-PYCARD Antibody) at a dilution of 1/60.



In comparison with the IHC on the left, the same paraffin-embedded Human esophagus cancer tissue is first treated with fusion protein and then with D154049(Anti-PYCARD Antibody) at dilution 1/60.



Gel: 12%SDS-PAGE, Lysate: 40 µg;
Lane: RAW264.7 cell lysate;
Primary antibody: 213302(PYCARD Antibody) at dilution 1/800;
Secondary antibody: HRP-conjugated Goat anti rabbit IgG at 1/5000 dilution;
Exposure time: 1 minute



Product Description

Pioneering GTPase and Oncogene Product Development since 2010
