

PUM3 RABBIT PAB

货号: S222299

产品全名: PUM3 兔多抗

基因符号: PEN; HA-8; PUF6; XTP5; PUF-A; HLA-HA8; KIAA0020

UNIPROT ID: Q15397 (Gene Accession - NP_055693)

背景: Inhibits the poly(ADP-ribosyl)ation activity of PARP1 and the degradation of PARP1 by CASP3 following genotoxic stress (PubMed:21266351). Binds to double-stranded RNA or DNA without sequence specificity (PubMed:25512524). Involved in development of the eye and of primordial germ cells (By similarity).

抗原: Synthetic peptide of human PUM3

经过测试的应用: ELISA, WB, IHC

推荐稀释比: IHC: 50-200;WB: 1000-5000;ELISA: 5000-10000

种属反应性: Rabbit

克隆性: Rabbit Polyclonal

亚型: Immunogen-specific rabbit IgG

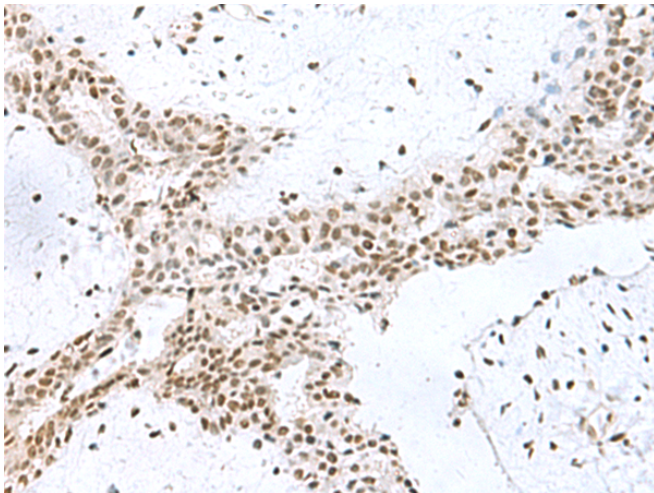
纯化: Antigen affinity purification

种属反应性: Human

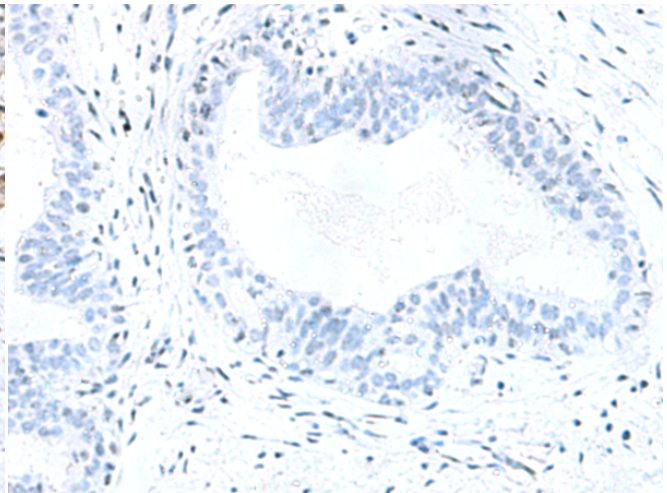
成分: PBS (without Mg²⁺ and Ca²⁺), pH 7.4, 150 mM NaCl, 0.05% Sodium Azide and 40% glycerol

研究领域: Cell Biology

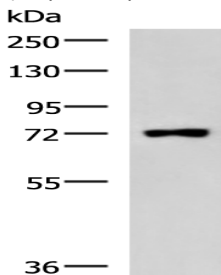
储存和运输: Store at -20°C. Avoid repeated freezing and thawing



Immunohistochemistry analysis of paraffin embedded Human breast cancer tissue using 222299(PUM3 Antibody) at a dilution of 1/80(Nucleus).



In comparison with the IHC on the left, the same paraffin-embedded Human breast cancer tissue is first treated with the synthetic peptide and then with 222299(Anti-PUM3 Antibody) at dilution 1/80.



Gel: 8%SDS-PAGE, Lysate: 40 µg;
Lane: Raji cell lysate ;
Primary antibody: 222299(PUM3 Antibody) at dilution 1/800;
Secondary antibody: HRP-conjugated Goat anti rabbit IgG at 1/5000 dilution;
Exposure time: 1 minute