

## **PULMONARY SURFACTANT ASSOCIATED PROTEIN D RABBIT MAB**

货号: N262956

产品全名: Pulmonary Surfactant Associated Protein D 兔单克隆抗体

基因符号 SP-D; Sfpd; Sftp4; AI573415

**UNIPROT ID:** P50404

**背景:** Contributes to the lung's defense against inhaled microorganisms, organic antigens and toxins. Interacts with compounds such as bacterial lipopolysaccharides, oligosaccharides and fatty acids and modulates leukocyte action in immune response. May participate in the extracellular reorganization or turnover of pulmonary surfactant. Binds strongly maltose residues and to a lesser extent other alpha-glucosyl moieties. Miscellaneous Pulmonary surfactant consists of 90% lipid and 10% protein. There are 4 surfactant-associated proteins: 2 collagenous, carbohydrate-binding glycoproteins (SP-A and SP-D) and 2 small hydrophobic proteins (SP-B and SP-C).

**抗原:** Recombinant protein of mouse Surfactant protein D

**经过测试的应用:** WB, IHC-P

**推荐稀释比:** WB: 1/500-1/1000 IHC: 1/50-1/100

**种属反应性:** Rabbit

**克隆性:** Rabbit Monoclonal

**克隆编号:** R06-2B1

**分子量:** Calculated MW: 38 kDa; Observed MW: 43 kDa

**亚型:** IgG

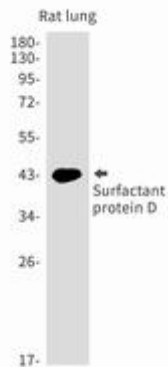
**纯化:** Affinity Purified

**种属反应性:** Rat

**成分:** PBS (without Mg<sup>2+</sup> and Ca<sup>2+</sup>), pH 7.3 containing 50% glycerol, 0.5% BSA and 0.02% sodium azide

**研究领域:** Immunology

**储存和运输:** Store at -20°C. Avoid repeated freezing and thawing



Western blot analysis of Surfactant protein D in rat lung lysates using Pulmonary Surfactant Associated Protein D antibody.