

## PTX3 RABBIT PAB

货号: S221035

产品全名: PTX3 兔多抗

基因符号 TSG-14; TNFAIP5

**UNIPROT ID:** P26022 (Gene Accession - NP\_002843 )

**背景:** Ptx3, also known as tumor necrosis factor-stimulated gene sequence-14 (TSG14), is a secreted pattern-recognition receptor that has a non-redundant role in resistance to selected microbial agents. Ptx3 belongs to the family of ?long pentraxins?, which have C-terminal pentraxin domains and novel amino-terminal domains. Ptx3 binds selected pathogens, including *Aspergillus fumigatus*, *Pseudomonas aeruginosa* and *Salmonella typhimurium*. It is synthesized in IgA glomerulonephritis and activates mesangial cells.

**抗原:** Synthetic peptide of human PTX3

**经过测试的应用:** ELISA, WB, IHC

**推荐稀释比:** IHC: Oct-50;WB: 500-2000;ELISA: 2000-5000

**种属反应性:** Rabbit

**克隆性:** Rabbit Polyclonal

**亚型:** Immunogen-specific rabbit IgG

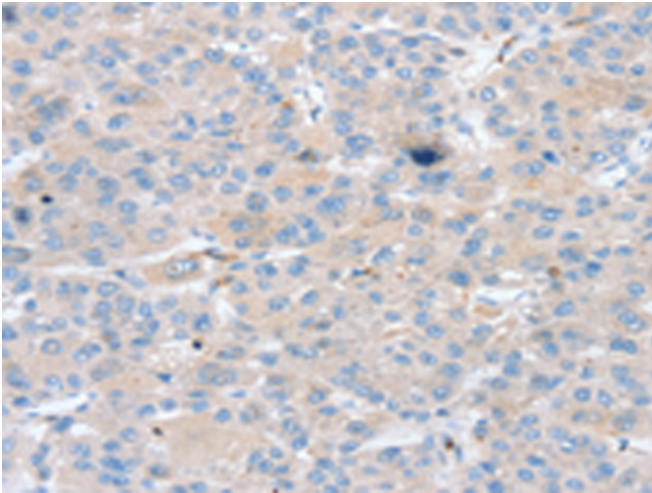
**纯化:** Antigen affinity purification

**种属反应性:** Human, Mouse

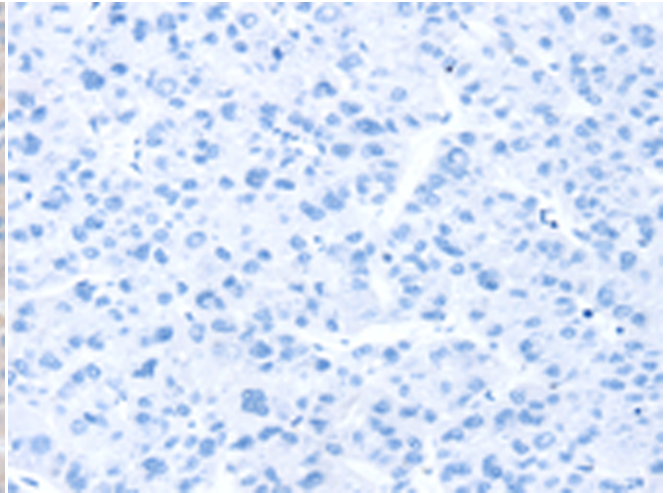
**成分:** PBS (without Mg<sup>2+</sup> and Ca<sup>2+</sup>), pH 7.4, 150 mM NaCl, 0.05% Sodium Azide and 40% glycerol

**研究领域:** Cardiovascular, Immunology

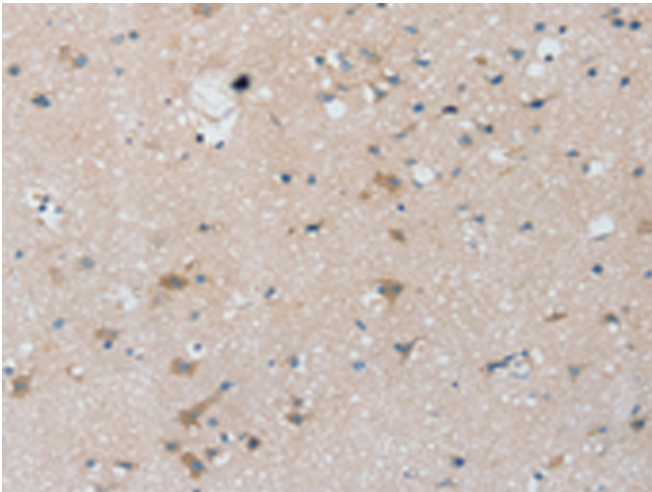
**储存和运输:** Store at -20°C. Avoid repeated freezing and thawing



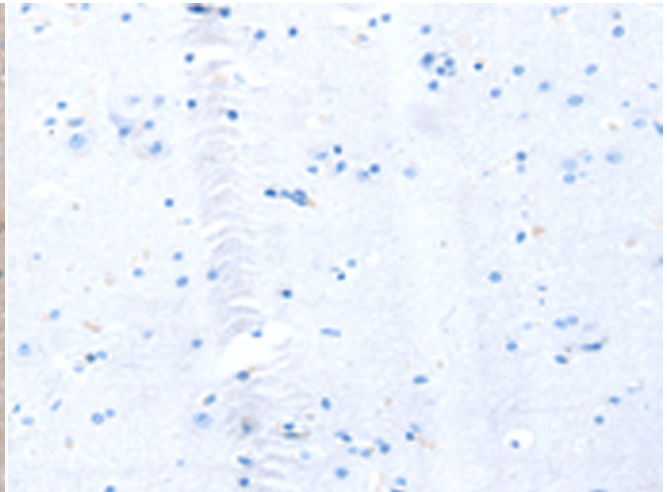
Immunohistochemistry analysis of paraffin embedded Human liver cancer tissue using 221035 (PTX3 Antibody) at a dilution of 1/25 (Cytoplasm).



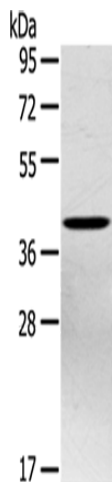
In comparison with the IHC on the left, the same paraffin-embedded Human liver cancer tissue is first treated with the synthetic peptide and then with 221035 (Anti-PTX3 Antibody) at dilution 1/25.



The image on the left is immunohistochemistry of paraffin-embedded Human brain tissue using 221035 (Anti-PTX3 Antibody) at a dilution of 1/25.



In comparison with the IHC on the left, the same paraffin-embedded Human brain tissue is first treated with synthetic peptide and then with D262383 (Anti-PTX3 Antibody) at dilution 1/25.



Gel: 8% SDS-PAGE, Lysate: 40 µg;  
Lane: Hepg2 cells;  
Primary antibody: 221035 (PTX3 Antibody) at dilution 1/400;  
Secondary antibody: Goat anti rabbit IgG at 1/8000 dilution;  
Exposure time: 40 seconds



# Product Description

Pioneering GTPase and Oncogene Product Development since 2010

---