

PTPRC RABBIT PAB

货号: S220441

产品全名: PTPRC 兔多抗

基因符号: LCA; LY5; B220; CD45; L-CA; T200; CD45R; GP180

UNIPROT ID: P08575 (Gene Accession - NP_002829)

背景: The protein encoded by this gene is a member of the protein tyrosine phosphatase (PTP) family. PTPs are known to be signaling molecules that regulate a variety of cellular processes including cell growth, differentiation, mitosis, and oncogenic transformation. This PTP contains an extracellular domain, a single transmembrane segment and two tandem intracytoplasmic catalytic domains, and thus is classified as a receptor type PTP. This PTP has been shown to be an essential regulator of T- and B-cell antigen receptor signaling. It functions through either direct interaction with components of the antigen receptor complexes, or by activating various Src family kinases required for the antigen receptor signaling.

抗原: Synthetic peptide of human PTPRC

经过测试的应用: ELISA, IHC

推荐稀释比: IHC: 100-300; ELISA: 2000-10000

种属反应性: Rabbit

克隆性: Rabbit Polyclonal

亚型: Immunogen-specific rabbit IgG

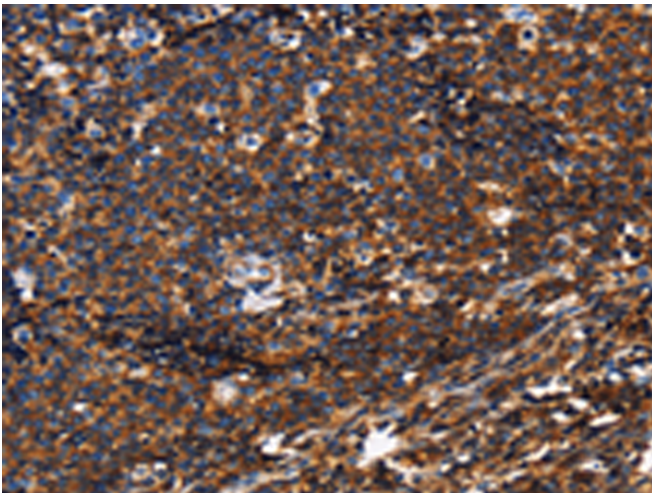
纯化: Antigen affinity purification

种属反应性: Human, Mouse, Rat

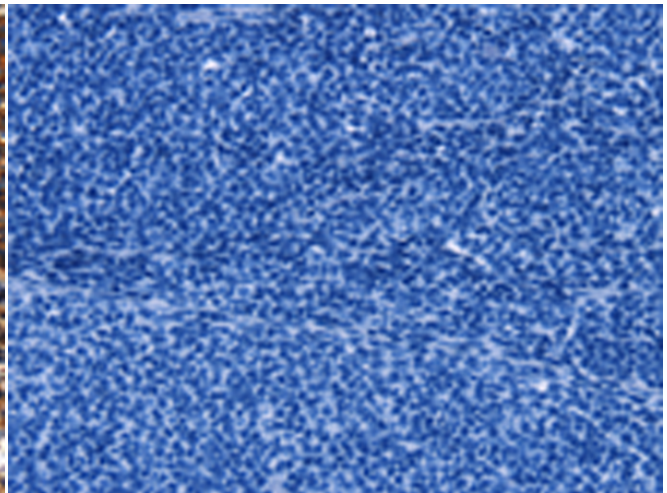
成分: PBS (without Mg²⁺ and Ca²⁺), pH 7.4, 150 mM NaCl, 0.05% Sodium Azide and 40% glycerol

研究领域: Signal Transduction, Neuroscience, Cardiovascular, Immunology, Stem Cells

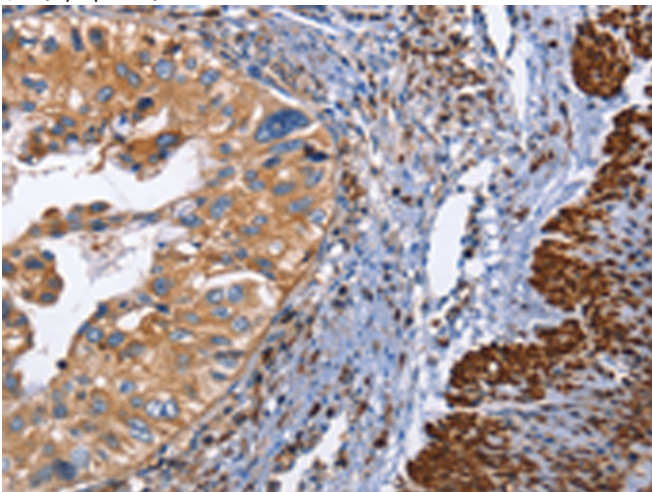
储存和运输: Store at -20°C. Avoid repeated freezing and thawing



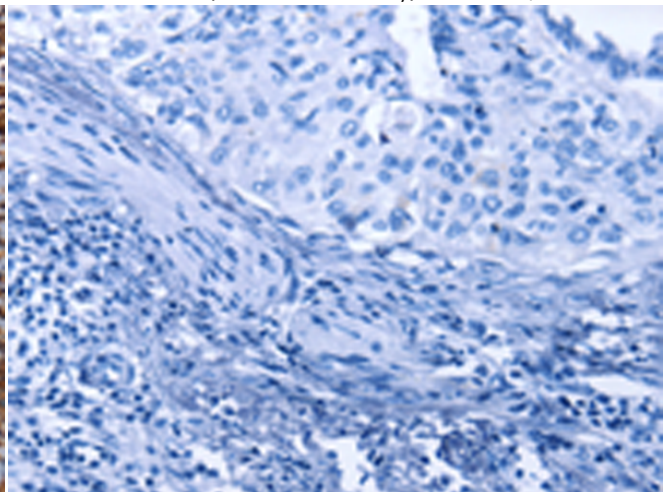
Immunohistochemistry analysis of paraffin embedded Human Lymphoma tissue using 220441(PTPRC Antibody) at a dilution of 1/60(Cytoplasm).



In comparison with the IHC on the left, the same paraffin-embedded Human Lymphoma tissue is first treated with the synthetic peptide and then with 220441(Anti-PTPRC Antibody) at dilution 1/60.



The image on the left is immunohistochemistry of paraffin-embedded Human cervical cancer tissue using 220441(Anti-PTPRC Antibody) at a dilution of 1/60.



In comparison with the IHC on the left, the same paraffin-embedded Human cervical cancer tissue is first treated with synthetic peptide and then with D261533(Anti-PTPRC Antibody) at dilution 1/60.



Product Description

Pioneering GTPase and Oncogene Product Development since 2010
