

## PTK2 RABBIT PAB

货号: S213509

产品全名: PTK2 兔多抗

基因符号 FAK, FADK, FAK1, FRNK, PPP1R71, p125FAK, pp125FAK

**UNIPROT ID:** Q05397 (Gene Accession - NP\_722560 )

**背景:** This gene encodes a cytoplasmic protein tyrosine kinase which is found concentrated in the focal adhesions that form between cells growing in the presence of extracellular matrix constituents. The encoded protein is a member of the FAK subfamily of protein tyrosine kinases but lacks significant sequence similarity to kinases from other subfamilies. Activation of this gene may be an important early step in cell growth and intracellular signal transduction pathways triggered in response to certain neural peptides or to cell interactions with the extracellular matrix. Several transcript variants encoding different isoforms have been found for this gene, but the full-length natures of only three of them have been determined.

**抗原:** Synthetic peptide of human PTK2

**经过测试的应用:** ELISA, WB, IHC

**推荐稀释比:** IHC: 100-300;WB: 2000-5000;ELISA: 1000-5000

**种属反应性:** Rabbit

**克隆性:** Rabbit Polyclonal

**亚型:** Immunogen-specific rabbit IgG

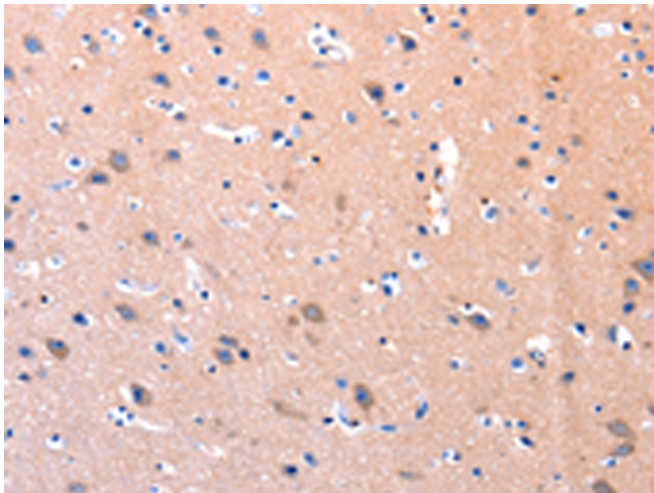
**纯化:** Antigen affinity purification

**种属反应性:** Human, Mouse, Rat

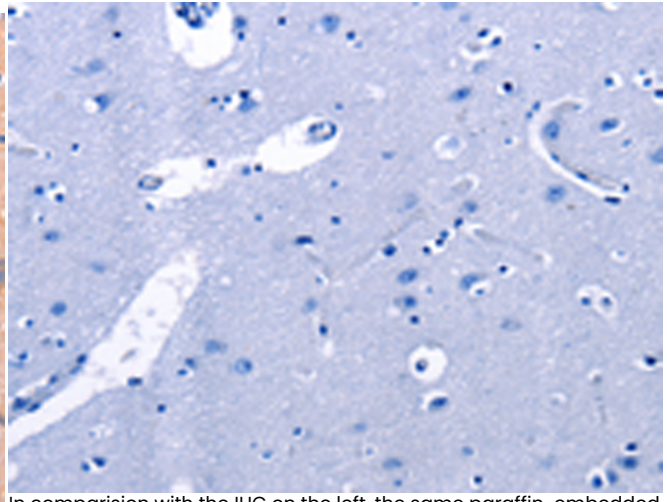
**成分:** PBS (without Mg<sup>2+</sup> and Ca<sup>2+</sup>), pH 7.4, 150 mM NaCl, 0.05% Sodium Azide and 40% glycerol

**研究领域:** Signal Transduction, Cardiovascular

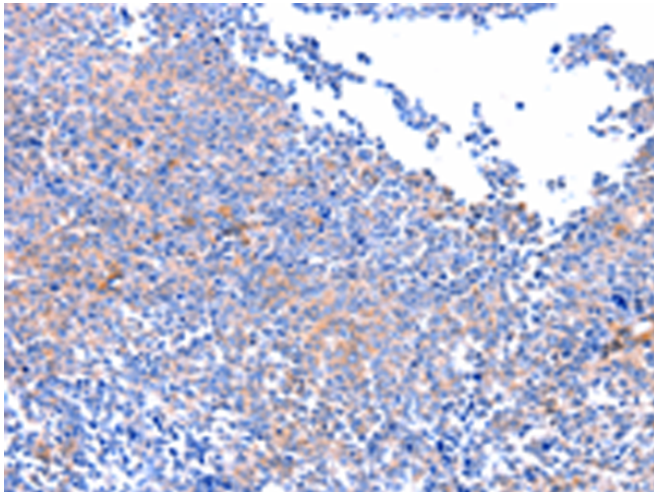
**储存和运输:** Store at -20°C. Avoid repeated freezing and thawing



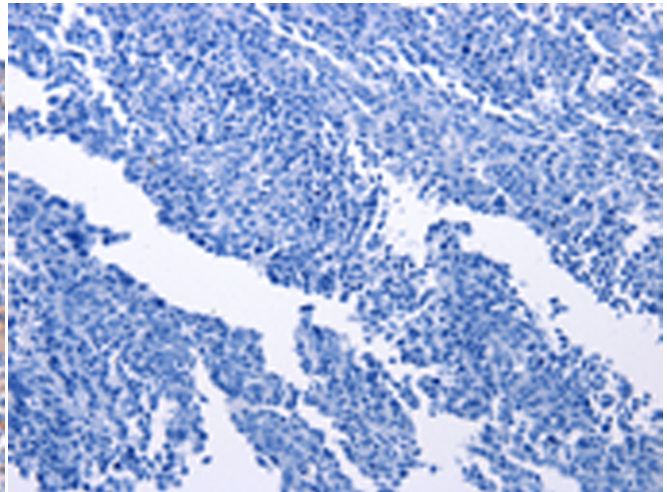
Immunohistochemistry analysis of paraffin embedded Human brain tissue using 213509(PTK2 Antibody) at a dilution of 1/75(Cytoplasm).



In comparison with the IHC on the left, the same paraffin-embedded Human brain tissue is first treated with the synthetic peptide and then with 213509(Anti-PTK2 Antibody) at dilution 1/75.



The image on the left is immunohistochemistry of paraffin-embedded Human ovarian cancer tissue using 213509(Anti-PTK2 Antibody) at a dilution of 1/75.



In comparison with the IHC on the left, the same paraffin-embedded Human ovarian cancer tissue is first treated with synthetic peptide and then with D160324(Anti-PTK2 Antibody) at dilution 1/75.



Gel: 8%SDS-PAGE, Lysate: 40 µg;  
Lane: Mouse brain tissue;  
Primary antibody: 213509(PTK2 Antibody) at dilution 1/1850;  
Secondary antibody: Goat anti rabbit IgG at 1/8000 dilution;  
Exposure time: 1 minute



# Product Description

Pioneering GTPase and Oncogene Product Development since 2010

---