

PTGES3L-AARSD1 RABBIT PAB

货号: S212591

产品全名: PTGES3L-AARSD1 兔多抗

基因符号

UNIPROT ID: Q9BTE6 (Gene Accession - BC004172)

背景: This locus represents naturally occurring readthrough transcription between the neighboring PTGES3L (prostaglandin E synthase 3 (cytosolic)-like) and AARSD1(alanyl-tRNA synthetase domain containing 1) genes on chromosome 17. The readthrough transcript encodes a fusion protein that shares sequence identity with each individual gene product.

抗原: Fusion protein of human PTGES3L-AARSD1

经过测试的应用: ELISA, IHC

推荐稀释比: IHC: 25-100; ELISA: 5000-10000

种属反应性: Rabbit

克隆性: Rabbit Polyclonal

亚型: Immunogen-specific rabbit IgG

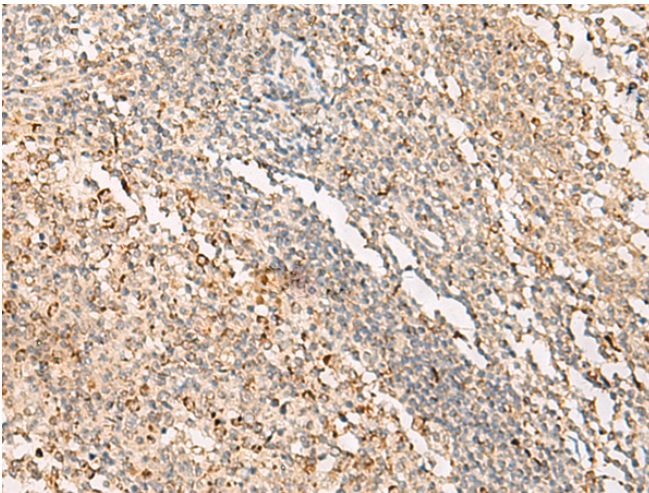
纯化: Antigen affinity purification

种属反应性: Human, Mouse, Rat

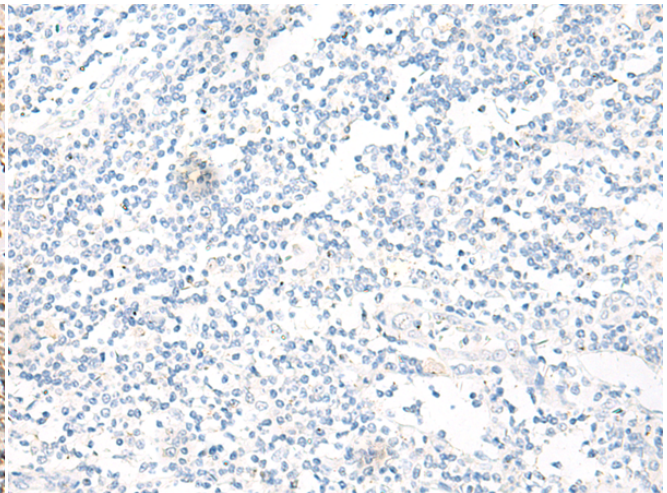
成分: PBS (without Mg²⁺ and Ca²⁺), pH 7.4, 150 mM NaCl, 0.05% Sodium Azide and 40% glycerol

研究领域: Epigenetics and Nuclear Signaling

储存和运输: Store at -20°C. Avoid repeated freezing and thawing



Immunohistochemistry analysis of paraffin embedded Human tonsil tissue using 212591(PTGES3L-AARSD1 Antibody) at a dilution of 1/35(Cytoplasm).



In comparison with the IHC on the left, the same paraffin-embedded Human tonsil tissue is first treated with the fusion protein and then with 212591(Anti-PTGES3L-AARSD1 Antibody) at dilution 1/35.