

PTCH1 RABBIT PAB

货号: N225484

产品全名: PTCH1 兔多抗

基因符号 PTCH1; PTCH; Protein patched homolog 1; PTC; PTC1

UNIPROT ID: Q13635

背景: This gene encodes a member of the patched gene family. The encoded protein is the receptor for sonic hedgehog, a secreted molecule implicated in the formation of embryonic structures and in tumorigenesis, as well as the desert hedgehog and indian hedgehog proteins. This gene functions as a tumor suppressor. Mutations of this gene have been associated with basal cell nevus syndrome, esophageal squamous cell carcinoma, trichoepitheliomas, transitional cell carcinomas of the bladder, as well as holoprosencephaly. Alternative splicing results in multiple transcript variants encoding different isoforms. Additional splice variants have been described, but their full length sequences and biological validity cannot be determined currently.

抗原: The antiserum was produced against synthesized peptide derived from human Patched. AA range:1-50

经过测试的应用: WB,IHC-P,ELISA

推荐稀释比: WB: 1/500-1/1000 IHC: 1/50-1/100 ELISA: 1/10000

种属反应性: Rabbit

克隆性: Rabbit Polyclonal

分子量: Calculated MW: 161 kDa; Observed MW: 161 kDa

亚型: IgG

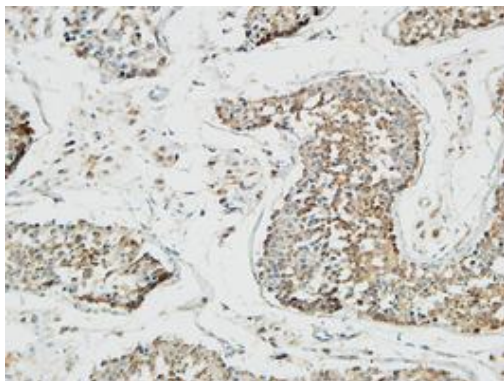
纯化: Affinity Chromatography

种属反应性: Human,Mouse

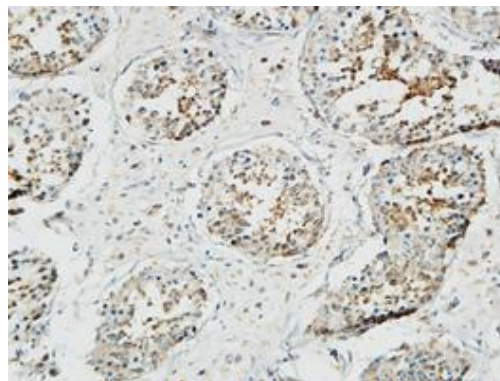
成分: PBS (without Mg²⁺ and Ca²⁺), pH 7.3 containing 50% glycerol, 0.5% BSA and 0.02% sodium azide

研究领域: Cell Biology

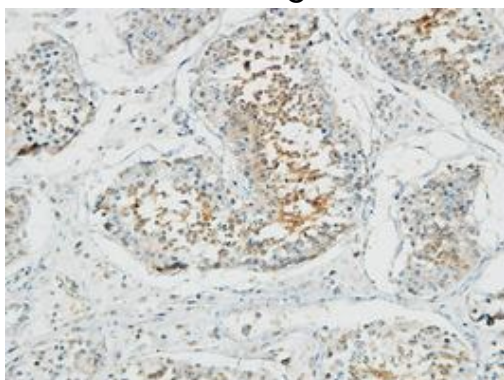
储存和运输: Store at -20°C. Avoid repeated freezing and thawing



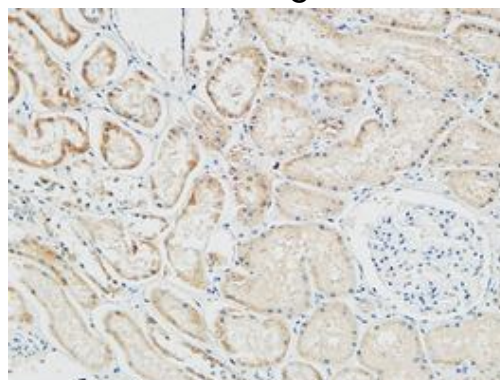
Immunohistochemical analysis of paraffin-embedded Human tonsils using PTCH1 antibody. High-pressure and temperature Tris-EDTA pH 8.0 was used for antigen retrieval.



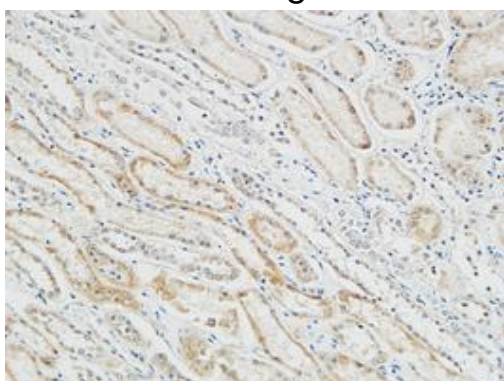
Immunohistochemistry analysis of paraffin-embedded Human testis using PTCH1 antibody. High-pressure and temperature Tris-EDTA pH 8.0 was used for antigen retrieval.



Immunohistochemistry analysis of paraffin-embedded Human testis using PTCH1 antibody. High-pressure and temperature Tris-EDTA pH 8.0 was used for antigen retrieval.



Immunohistochemistry analysis of paraffin-embedded Human Right kidney using PTCH1 antibody. High-pressure and temperature Tris-EDTA pH 8.0 was used for antigen retrieval.



Immunohistochemistry analysis of paraffin-embedded Human Right kidney using PTCH1 antibody. High-pressure and temperature Tris-EDTA pH 8.0 was used for antigen retrieval.



Product Description

Pioneering GTPase and Oncogene Product Development since 2010
