

## PTCD3 RABBIT PAB

货号: S219500

产品全名: PTCD3 兔多抗

基因符号 MRP-S39

**UNIPROT ID:** Q96EY7 (Gene Accession - BC011832)

背景: Mitochondrial RNA-binding protein that has a role in mitochondrial translation.

抗原: Fusion protein of human PTCD3

经过测试的应用: ELISA, WB, IHC

推荐稀释比: IHC: 100-200;WB: 500-2000;ELISA: 5000-10000

种属反应性: Rabbit

克隆性: Rabbit Polyclonal

亚型: Immunogen-specific rabbit IgG

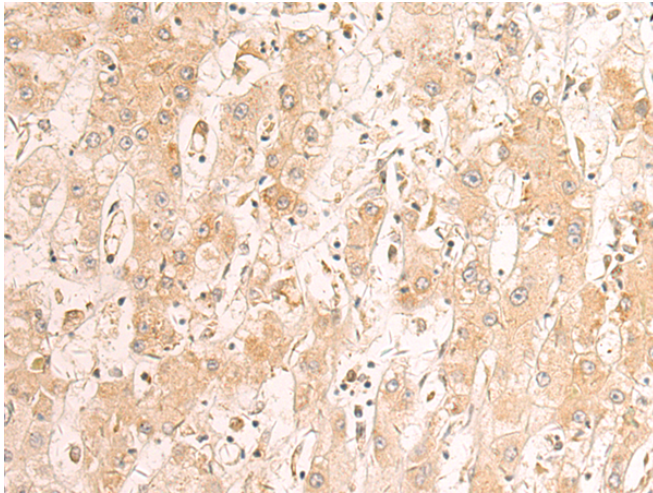
纯化: Antigen affinity purification

种属反应性: Human

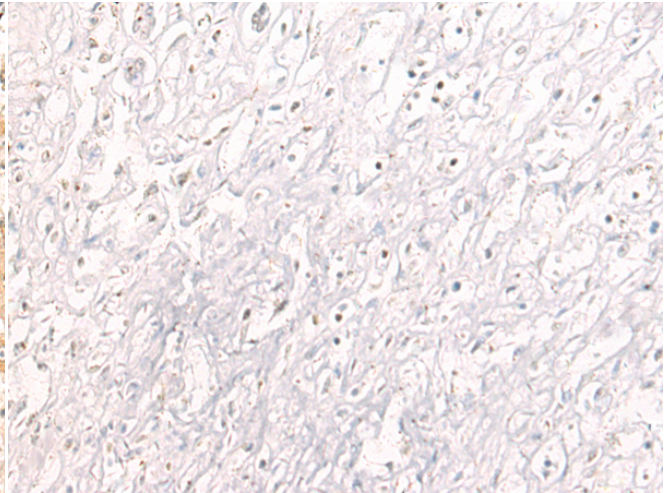
成分: PBS (without Mg<sup>2+</sup> and Ca<sup>2+</sup>), pH 7.4, 150 mM NaCl, 0.05% Sodium Azide and 40% glycerol

研究领域: Epigenetics and Nuclear Signaling

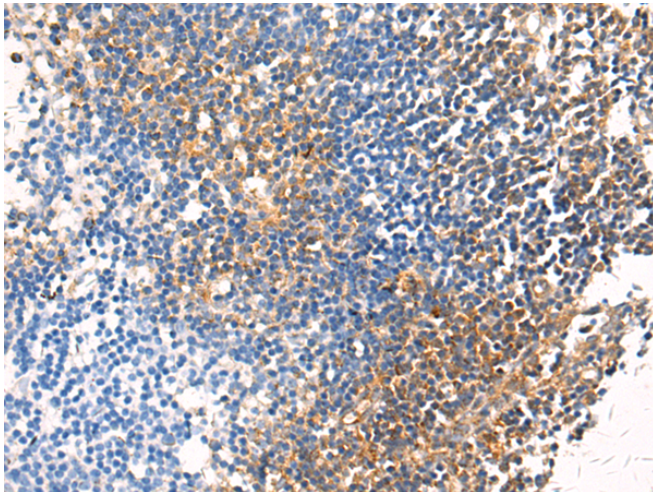
储存和运输: Store at -20°C. Avoid repeated freezing and thawing



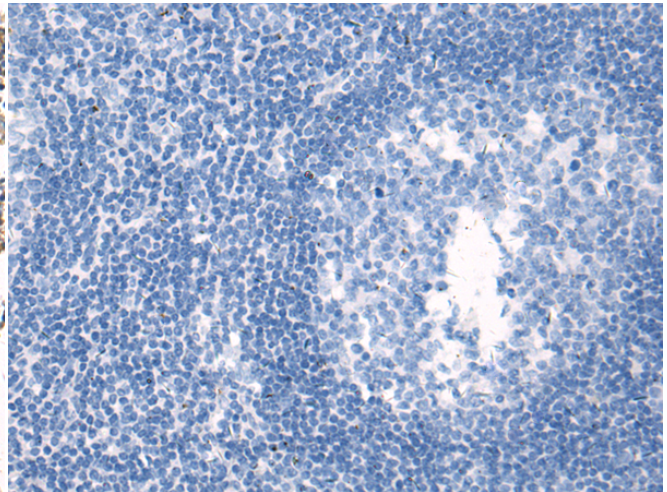
Immunohistochemistry analysis of paraffin embedded Human liver cancer tissue using 219500(PTCD3 Antibody) at a dilution of 1/100(Cytoplasm).



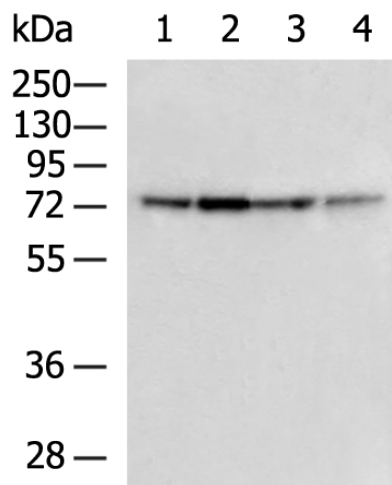
In comparison with the IHC on the left, the same paraffin-embedded Human liver cancer tissue is first treated with the fusion protein and then with 219500(Anti-PTCD3 Antibody) at dilution 1/100.



The image on the left is immunohistochemistry of paraffin-embedded Human tonsil tissue using 219500(Anti-PTCD3 Antibody) at a dilution of 1/100.



In comparison with the IHC on the left, the same paraffin-embedded Human tonsil tissue is first treated with fusion protein and then with D227392(Anti-PTCD3 Antibody) at dilution 1/100.



Gel: 8%SDS-PAGE, Lysate: 40 µg;  
 Lane 1-4: HepG2 cell, BGC-823 Cell, LOVO cell, A172 cell lysates;  
 Primary antibody: 219500(PTCD3 Antibody) at dilution 1/800;  
 Secondary antibody: HRP-conjugated Goat anti rabbit IgG at 1/5000 dilution;  
 Exposure time: 15 seconds



# Product Description

Pioneering GTPase and Oncogene Product Development since 2010

---