

PSTPIP1 RABBIT PAB

货号: S219386

产品全名: PSTPIP1 兔多抗

基因符号 H-PIP; PAPAS; CD2BP1; PSTPIP; CD2BP1L; CD2BP1S

UNIPROT ID: O43586 (Gene Accession - BC008602)

背景: This gene encodes a cytoskeletal protein that is highly expressed in hemopoietic tissues. This protein functions via its interaction with several different proteins involved in cytoskeletal organization and inflammatory processes. It binds to the cytoplasmic tail of CD2, an effector of T cell activation and adhesion, downregulating CD2-triggered adhesion. It binds PEST-type protein tyrosine phosphatases (PTP) and directs them to c-Abl kinase to mediate c-Abl dephosphorylation, thereby, regulating c-Abl activity. It also interacts with pyrin, which is found in association with the cytoskeleton in myeloid/monocytic cells and modulates immunoregulatory functions. Mutations in this gene are associated with PAPA (pyogenic sterile arthritis, pyoderma gangrenosum, and acne) syndrome. It is hypothesized that the disease-causing mutations compromise physiologic signaling necessary for the maintenance of a proper inflammatory response.

抗原: Fusion protein of human PSTPIP1

经过测试的应用: ELISA, IHC

推荐稀释比: IHC: 150-300; ELISA: 5000-10000

种属反应性: Rabbit

克隆性: Rabbit Polyclonal

亚型: Immunogen-specific rabbit IgG

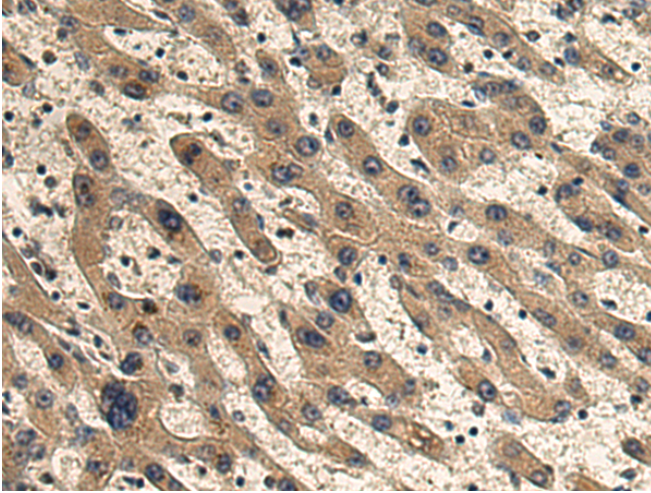
纯化: Antigen affinity purification

种属反应性: Human, Mouse

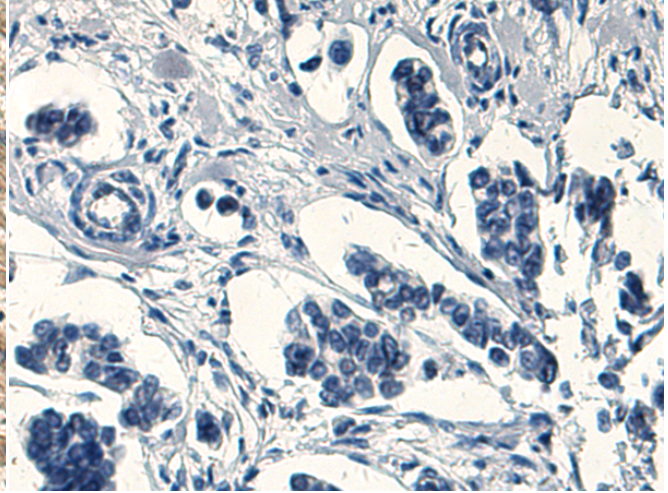
成分: PBS (without Mg²⁺ and Ca²⁺), pH 7.4, 150 mM NaCl, 0.05% Sodium Azide and 40% glycerol

研究领域: Signal Transduction

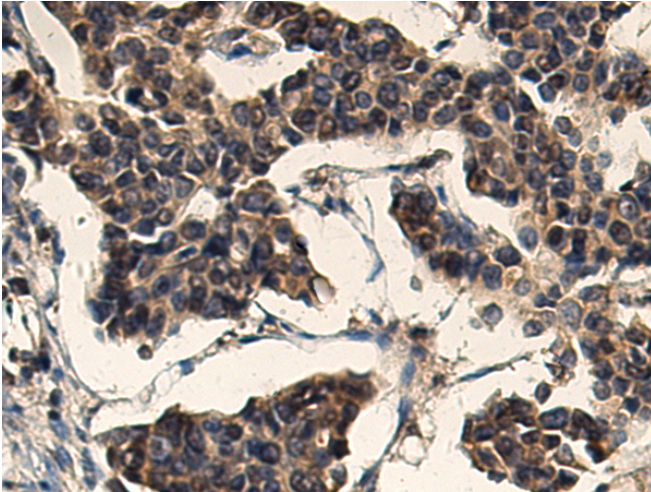
储存和运输: Store at -20°C. Avoid repeated freezing and thawing



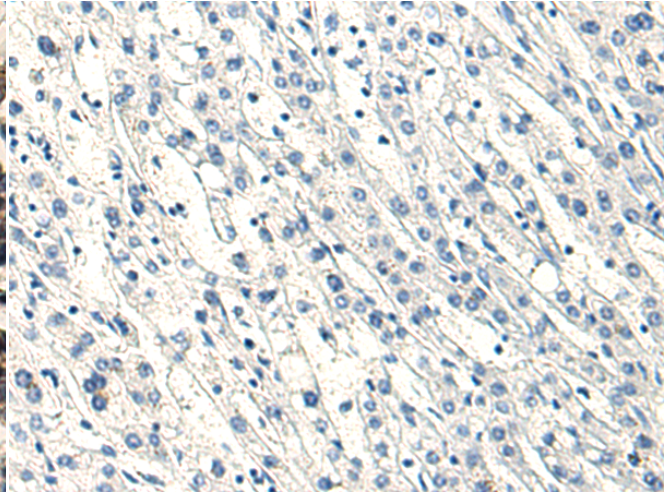
Immunohistochemistry analysis of paraffin embedded Human liver cancer tissue using 219386 (PSTPIPI Antibody) at a dilution of 1/120 (Cytoplasm).



In comparison with the IHC on the left, the same paraffin-embedded Human liver cancer tissue is first treated with the fusion protein and then with 219386 (Anti-PSTPIPI Antibody) at dilution 1/120.



The image on the left is immunohistochemistry of paraffin-embedded Human breast cancer tissue using 219386 (Anti-PSTPIPI Antibody) at a dilution of 1/120.



In comparison with the IHC on the left, the same paraffin-embedded Human breast cancer tissue is first treated with fusion protein and then with D226615 (Anti-PSTPIPI Antibody) at dilution 1/120.