

PSS2 RABBIT MAB

货号: N262780

产品全名: PSS2 兔单克隆抗体

基因符号 PSS2

UNIPROT ID: Q9BVG9

背景: Catalyzes a base-exchange reaction in which the polar head group of phosphatidylethanolamine (PE) or phosphatidylcholine (PC) is replaced by L-serine. PTDSS2 is specific for phosphatidylethanolamine and does not act on phosphatidylcholine.

抗原: Recombinant protein of human PTDSS2

经过测试的应用: WB,IP

推荐稀释比: WB: 1/500-1/1000 IP: 1/20

种属反应性: Rabbit

克隆性: Rabbit Monoclonal

克隆编号: R07-9G9

分子量: Calculated MW: 56 kDa; Observed MW: 56 kDa

亚型: IgG

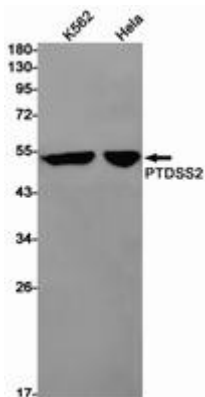
纯化: Affinity Purified

种属反应性: Human

成分: PBS (without Mg²⁺ and Ca²⁺), pH 7.3 containing 50% glycerol, 0.5% BSA and 0.02% sodium azide

研究领域: Signal Transduction

储存和运输: Store at -20°C. Avoid repeated freezing and thawing



Western blot analysis of PTSS2 in K562, HeLa lysates using PSS2 antibody.