

PSMD14 RABBIT PAB

货号: N226016

产品全名: PSMD14 兔多抗

基因符号 26S proteasome non-ATPase regulatory subunit 14; PADI;
POHI; Psmd14; RPN11

UNIPROT ID: O00487

背景: Metalloprotease component of the 26S proteasome that specifically cleaves 'Lys-63'-linked polyubiquitin chains. The 26S proteasome is involved in the ATP-dependent degradation of ubiquitinated proteins. The function of the 'Lys-63'-specific deubiquitination of the proteasome is unclear.

抗原: A synthetic peptide of human PSMD14

经过测试的应用: WB,IHC-F,IHC-P,ICC/IF

推荐稀释比: WB: 1/500-1/1000 IHC: 1/50-1/100 IF: 1/50-1/200

种属反应性: Rabbit

克隆性: Rabbit Polyclonal

分子量: Calculated MW: 35 kDa; Observed MW: 35 kDa

亚型: IgG

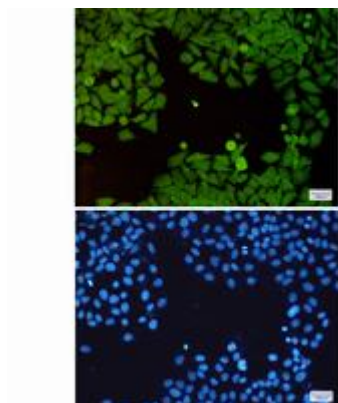
纯化: Affinity Purified

种属反应性: Human, Mouse and Rat,Monkey

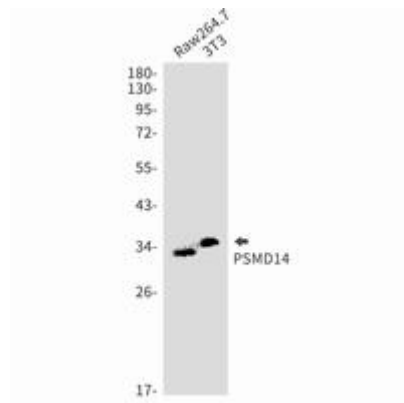
成分: PBS (without Mg²⁺ and Ca²⁺), pH 7.3 containing 50% glycerol, 0.5% BSA and 0.02% sodium azide

研究领域: Cell Biology

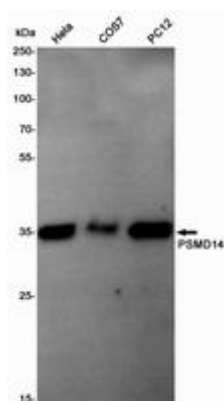
储存和运输: Store at -20°C. Avoid repeated freezing and thawing



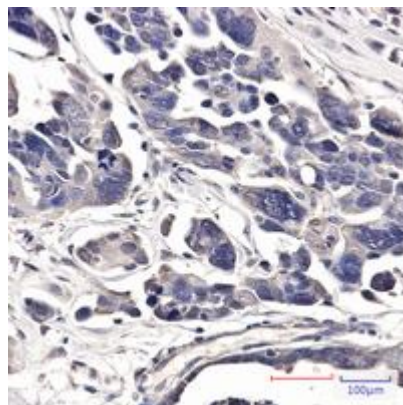
Immunocytochemistry analysis of PSMD14(green) in Hela using PSMD14 antibody, and DAPI(blue)



Western blot analysis of PSMD14 in Raw264.7, 3T3 lysates using PSMD14 antibody.



Western blot analysis of PSMD14 in Hela, COS7, PC-12 lysates using PSMD14 antibody.



Immunohistochemistry analysis of paraffin-embedded Human Cholangiocarcinoma using PSMD14 antibody. High-pressure and temperature Sodium Citrate pH 6.0 was used for antigen retrieval.