

PSMB10 RABBIT MAB

货号: N262778

产品全名: PSMB10 兔单克隆抗体

基因符号 LMP10; MECL1; beta2i

UNIPROT ID: P40306

背景: The proteasome is a multicatalytic proteinase complex which is characterized by its ability to cleave peptides with Arg, Phe, Tyr, Leu, and Glu adjacent to the leaving group at neutral or slightly basic pH. The proteasome has an ATP-dependent proteolytic activity. This subunit is involved in antigen processing to generate class I binding peptides.

抗原: A synthetic peptide of human PSMB10

经过测试的应用: WB,IHC-P

推荐稀释比: WB: 1/500-1/1000 IHC: 1/50-1/100

种属反应性: Rabbit

克隆性: Rabbit Monoclonal

克隆编号: R08-615

分子量: Calculated MW: 29 kDa; Observed MW: 29 kDa

亚型: IgG

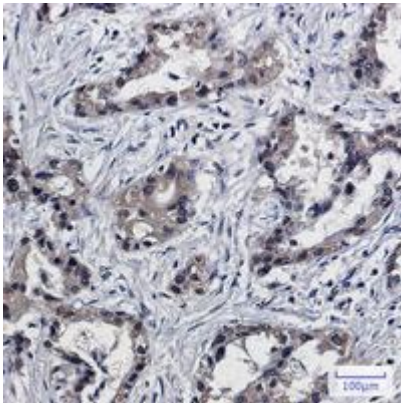
纯化: Affinity Purified

种属反应性: Human, Mouse and Rat

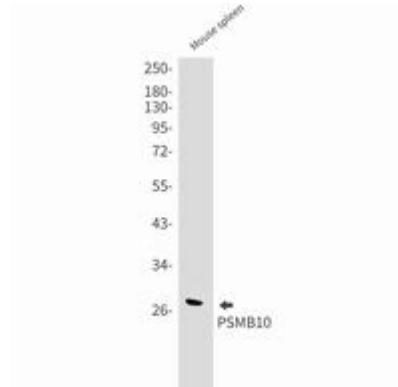
成分: PBS (without Mg²⁺ and Ca²⁺), pH 7.3 containing 50% glycerol, 0.5% BSA and 0.02% sodium azide

研究领域: Immunology

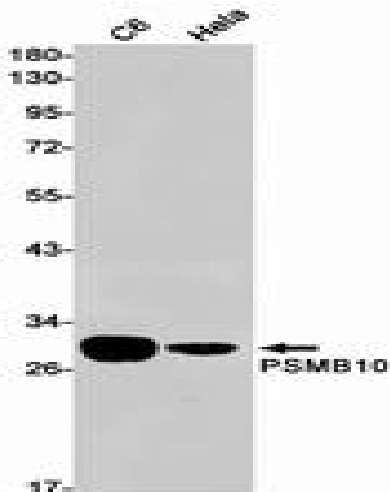
储存和运输: Store at -20°C. Avoid repeated freezing and thawing



Immunohistochemistry analysis of paraffin-embedded Human lung cancer using PSMB10 antibody. High-pressure and temperature Sodium Citrate pH 6.0 was used for antigen retrieval.



Western blot analysis of PSMB10 in mouse spleen lysates using PSMB10 antibody.



Western blot analysis of PSMB10 in C6, HeLa lysates using PSMB10 antibody.