

PSF1 RABBIT MAB

货号: N262774

产品全名: PSF1 兔单克隆抗体

基因符号 GINS complex subunit 1

UNIPROT ID: Q14691

背景: The GINS complex plays an essential role in the initiation of DNA replication, and progression of DNA replication forks. GINS complex seems to bind preferentially to single-stranded DNA. GINS1 is essential for function.

抗原: A synthetic peptide of human PSF1

经过测试的应用: WB, ICC/IF, IP

推荐稀释比: WB: 1/500-1/1000 IF: 1/50-1/200 IP: 1/20

种属反应性: Rabbit

克隆性: Rabbit Monoclonal

克隆编号: R04-1A8

分子量: Calculated MW: 23 kDa; Observed MW: 23 kDa

亚型: IgG

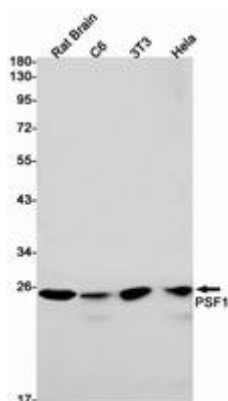
纯化: Affinity Purified

种属反应性: Human, Mouse and Rat

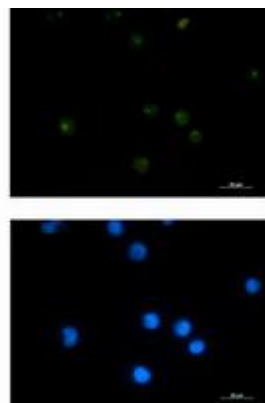
成分: PBS (without Mg²⁺ and Ca²⁺), pH 7.3 containing 50% glycerol, 0.5% BSA and 0.02% sodium azide

研究领域: Epigenetics and Nuclear Signaling

储存和运输: Store at -20°C. Avoid repeated freezing and thawing



Western blot analysis of PSF1 in rat Brain, C6, 3T3, Hela lysates using PSF1 antibody.



Immunocytochemistry analysis of PSF1 (green) in Jurkat using PSF1 antibody, and DAPI (blue).



Product Description

Pioneering GTPase and Oncogene Product Development since 2010
