

## PRXL2B RABBIT PAB

货号: S212142

产品全名: PRXL2B 兔多抗

基因符号: Clorf93; FAM213B

**UNIPROT ID:** Q8TBF2 (Gene Accession - BC022547)

**背景:** Catalyzes the reduction of prostaglandin-ethanolamide H2 (prostamide H2) to prostamide F(2alpha) with NADPH as proton donor. Also able to reduce prostaglandin H2 to prostaglandin F(2alpha) (By similarity).

**抗原:** Fusion protein of human PRXL2B

**经过测试的应用:** ELISA, WB, IHC

**推荐稀释比:** IHC: 40-200;WB: 200-1000;ELISA: 5000-10000

**种属反应性:** Rabbit

**克隆性:** Rabbit Polyclonal

**亚型:** Immunogen-specific rabbit IgG

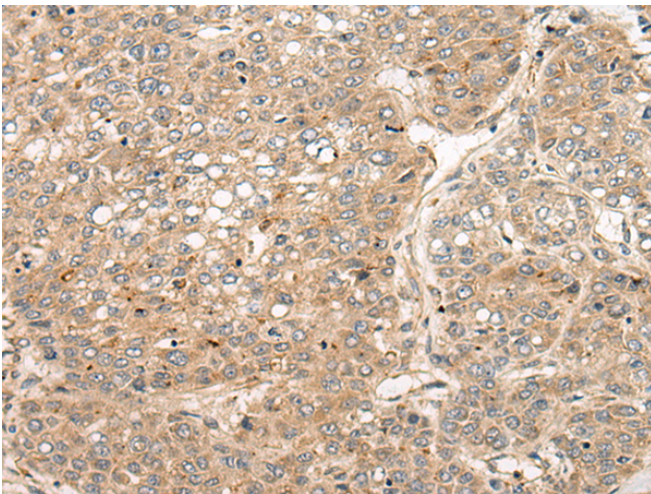
**纯化:** Antigen affinity purification

**种属反应性:** Human, Mouse, Rat

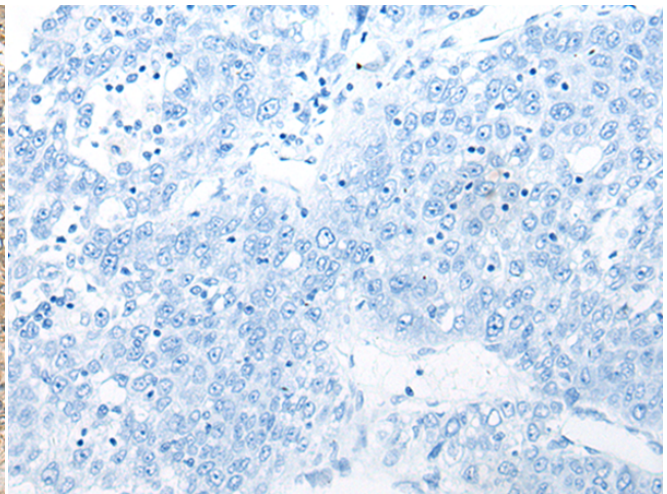
**成分:** PBS (without Mg<sup>2+</sup> and Ca<sup>2+</sup>), pH 7.4, 150 mM NaCl, 0.05% Sodium Azide and 40% glycerol

**研究领域:** Cell Biology

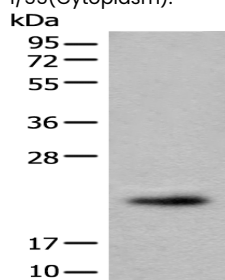
**储存和运输:** Store at -20°C. Avoid repeated freezing and thawing



Immunohistochemistry analysis of paraffin embedded Human liver cancer tissue using 212142 (PRXL2B Antibody) at a dilution of 1/55 (Cytoplasm).



In comparison with the IHC on the left, the same paraffin-embedded Human liver cancer tissue is first treated with the fusion protein and then with 212142 (Anti-PRXL2B Antibody) at dilution 1/55.



Gel: 12% SDS-PAGE, Lysate: 40 µg;

Lane: Human fetal brain tissue lysate;

Primary antibody: 212142 (PRXL2B Antibody) at dilution 1/550;

Secondary antibody: Goat anti rabbit IgG at 1/8000 dilution;

Exposure time: 30 seconds