

## PRTFDC1 RABBIT PAB

货号: S218191

产品全名: PRTFDC1 兔多抗

基因符号: HHGP

**UNIPROT ID:** Q9NRG1 (Gene Accession - BC008662)

背景: Enables protein homodimerization activity. Predicted to be involved in purine ribonucleoside salvage.

抗原: Fusion protein of human PRTFDC1

经过测试的应用: ELISA, WB, IHC

推荐稀释比: IHC: 150-300;WB: 200-1000;ELISA: 5000-10000

种属反应性: Rabbit

克隆性: Rabbit Polyclonal

亚型: Immunogen-specific rabbit IgG

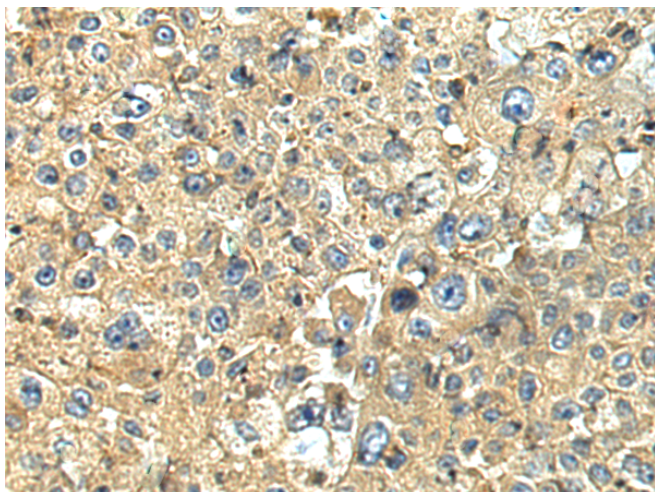
纯化: Antigen affinity purification

种属反应性: Human

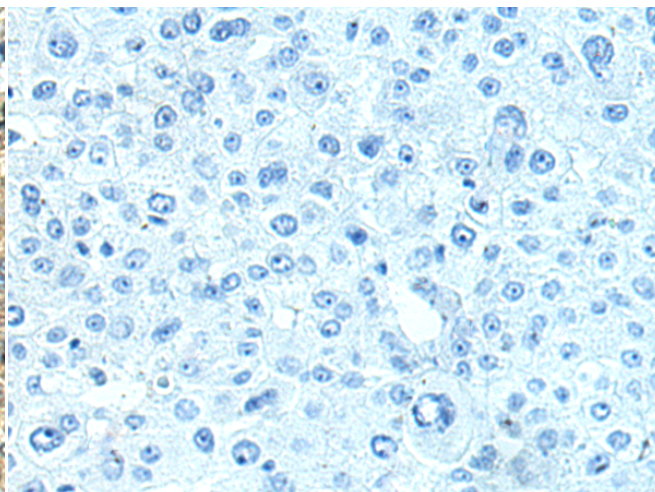
成分: PBS (without Mg<sup>2+</sup> and Ca<sup>2+</sup>), pH 7.4, 150 mM NaCl, 0.05% Sodium Azide and 40% glycerol

研究领域: Epigenetics and Nuclear Signaling

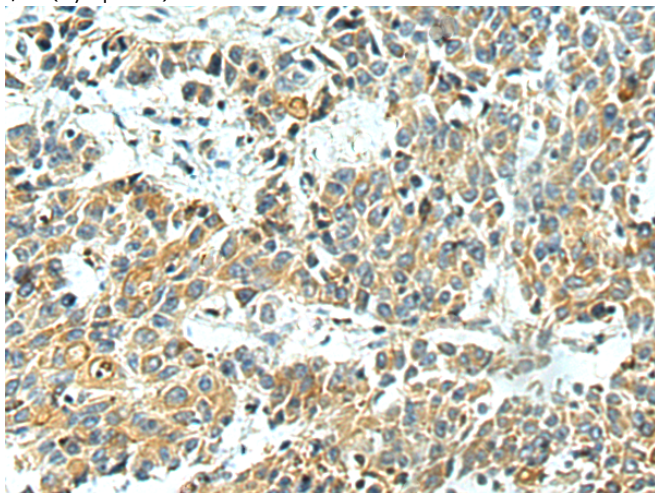
储存和运输: Store at -20°C. Avoid repeated freezing and thawing



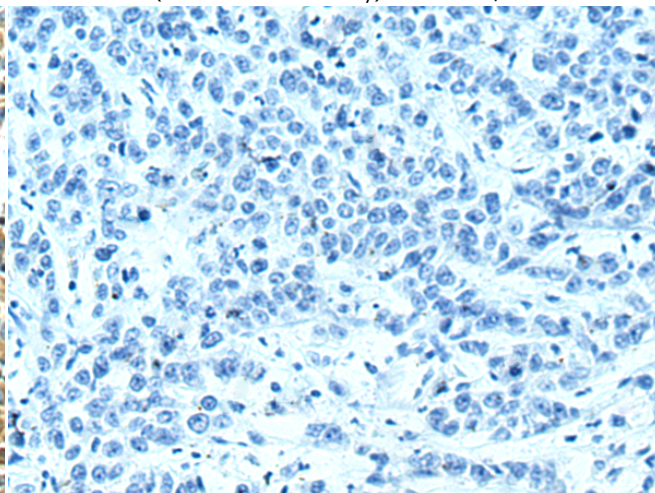
Immunohistochemistry analysis of paraffin embedded Human liver cancer tissue using 218191(PRTFDC1 Antibody) at a dilution of 1/150(Cytoplasm).



In comparison with the IHC on the left, the same paraffin-embedded Human liver cancer tissue is first treated with the fusion protein and then with 218191(Anti-PRTFDC1 Antibody) at dilution 1/150.

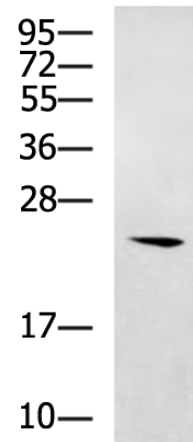


The image on the left is immunohistochemistry of paraffin-embedded Human colorectal cancer tissue using 218191(Anti-PRTFDC1 Antibody) at a dilution of 1/150.



In comparison with the IHC on the left, the same paraffin-embedded Human colorectal cancer tissue is first treated with fusion protein and then with D223908(Anti-PRTFDC1 Antibody) at dilution 1/150.

kDa



Gel: 12%SDS-PAGE, Lysate: 40 µg;  
 Lane: Human ovarian cancer (granulosa cell tumor) tissue lysate;  
 Primary antibody: 218191(PRTFDC1 Antibody) at dilution 1/300;  
 Secondary antibody: HRP-conjugated Goat anti rabbit IgG at 1/5000 dilution;  
 Exposure time: 90 seconds



# Product Description

Pioneering GTPase and Oncogene Product Development since 2010

---