

PRSS8 RABBIT PAB

货号: S220832

产品全名: PRSS8 兔多抗

基因符号: CAPI; PROSTASIN

UNIPROT ID: Q16651 (Gene Accession - NP_002764)

背景: This gene encodes a trypsinogen, which is a member of the trypsin family of serine proteases. This enzyme is highly expressed in prostate epithelia and is one of several proteolytic enzymes found in seminal fluid. The proprotein is cleaved to produce a light chain and a heavy chain which are associated by a disulfide bond. It is active on peptide linkages involving the carboxyl group of lysine or arginine.

抗原: Synthetic peptide of human PRSS8

经过测试的应用: ELISA, IHC

推荐稀释比: IHC: 25-100; ELISA: 2000-5000

种属反应性: Rabbit

克隆性: Rabbit Polyclonal

亚型: Immunogen-specific rabbit IgG

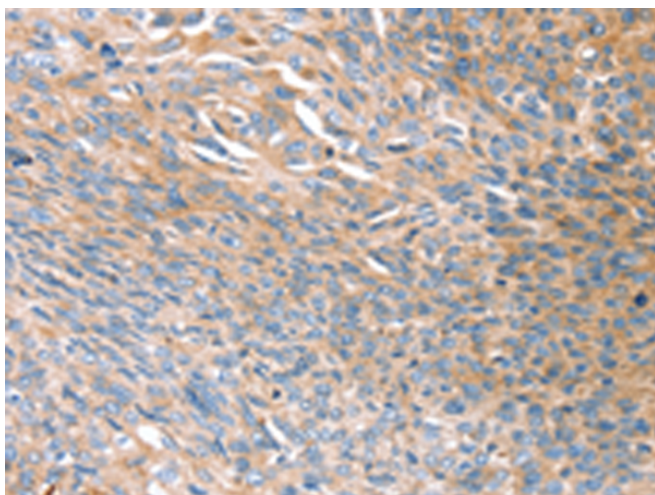
纯化: Antigen affinity purification

种属反应性: Human, Mouse, Rat

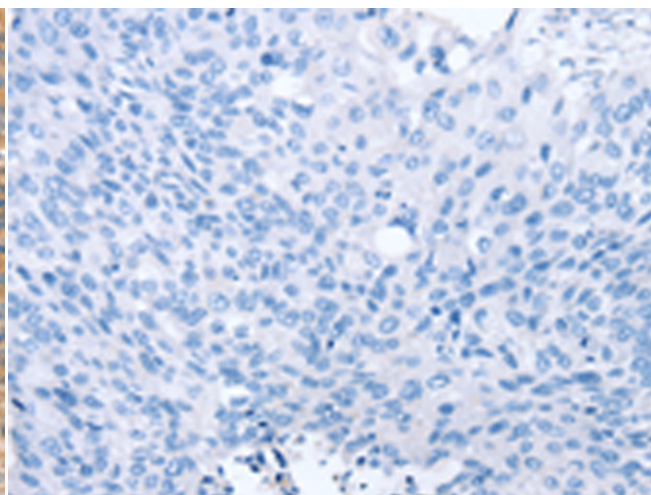
成分: PBS (without Mg²⁺ and Ca²⁺), pH 7.4, 150 mM NaCl, 0.05% Sodium Azide and 40% glycerol

研究领域: Cell Biology

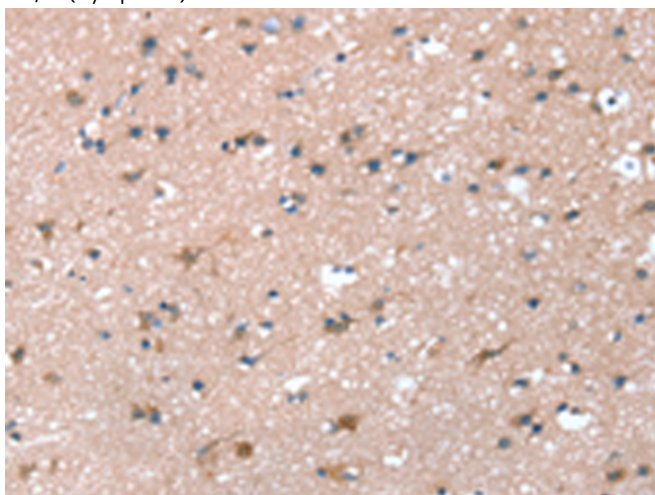
储存和运输: Store at -20°C. Avoid repeated freezing and thawing



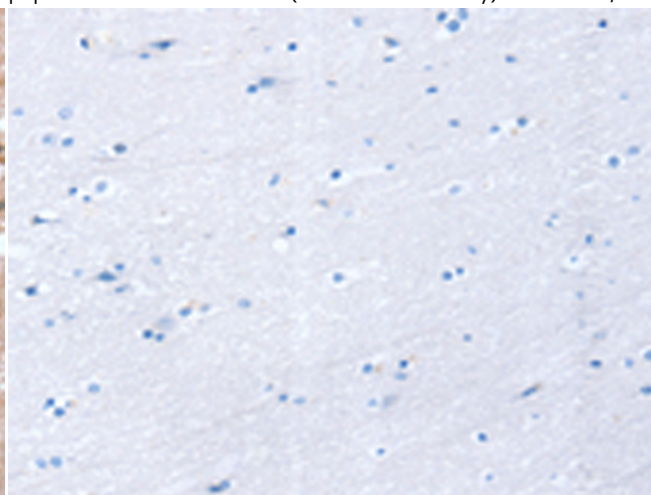
Immunohistochemistry analysis of paraffin embedded Human esophagus cancer tissue using 220832 (PRSS8 Antibody) at a dilution of 1/45 (Cytoplasm).



In comparison with the IHC on the left, the same paraffin-embedded Human esophagus cancer tissue is first treated with the synthetic peptide and then with 220832 (Anti-PRSS8 Antibody) at dilution 1/45.



The image on the left is immunohistochemistry of paraffin-embedded Human brain tissue using 220832 (Anti-PRSS8 Antibody) at a dilution of 1/45.



In comparison with the IHC on the left, the same paraffin-embedded Human brain tissue is first treated with synthetic peptide and then with D262084 (Anti-PRSS8 Antibody) at dilution 1/45.



Product Description

Pioneering GTPase and Oncogene Product Development since 2010
