

## PRSS8 RABBIT MAB

货号: N262773

产品全名: PRSS8 兔单克隆抗体

基因符号 CAPI; PROSTASIN

**UNIPROT ID:** Q16651

**背景:** Possesses a trypsin-like cleavage specificity with a preference for poly-basic substrates. Stimulates epithelial sodium channel (ENaC) activity through activating cleavage of the gamma subunits (SCNN1G).

**抗原:** Recombinant protein of human PRSS8

**经过测试的应用:** WB,IP

**推荐稀释比:** WB: 1/500-1/1000 IP: 1/20

**种属反应性:** Rabbit

**克隆性:** Rabbit Monoclonal

**克隆编号:** R03-4J4

**分子量:** Calculated MW: 36 kDa; Observed MW: 36 kDa

**亚型:** IgG

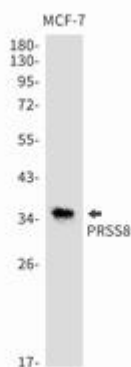
**纯化:** Affinity Purified

**种属反应性:** Human

**成分:** PBS (without Mg<sup>2+</sup> and Ca<sup>2+</sup>), pH 7.3 containing 50% glycerol, 0.5% BSA and 0.02% sodium azide

**研究领域:** Cell Biology

**储存和运输:** Store at -20°C. Avoid repeated freezing and thawing



Western blot analysis of PRSS8 in MCF-7 lysates using PRSS8 antibody.