

PRSS50 RABBIT PAB

货号: S221059

产品全名: PRSS50 兔多抗

基因符号: CT20; TSP50

UNIPROT ID: Q9UI38 (Gene Accession - NP_037402)

背景: May be involved in proteolysis through its threonine endopeptidase activity. Testis specific. Differentially expressed in some breast cancer tissues.

抗原: Synthetic peptide of human PRSS50

经过测试的应用: ELISA, WB, IHC

推荐稀释比: IHC: 25-100;WB: 500-2000;ELISA: 2000-5000

种属反应性: Rabbit

克隆性: Rabbit Polyclonal

亚型: Immunogen-specific rabbit IgG

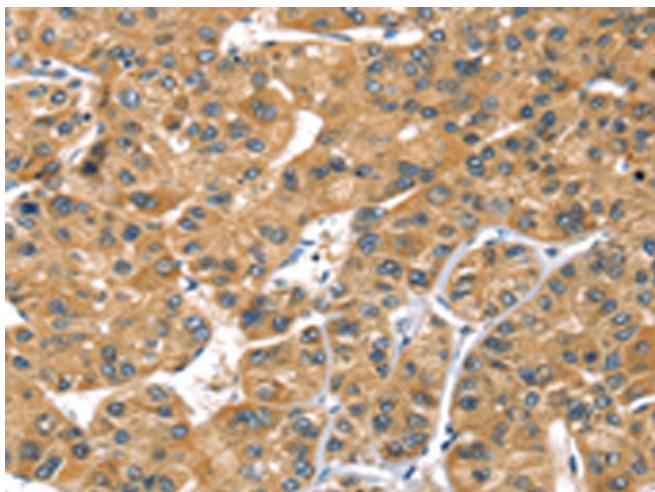
纯化: Antigen affinity purification

种属反应性: Human

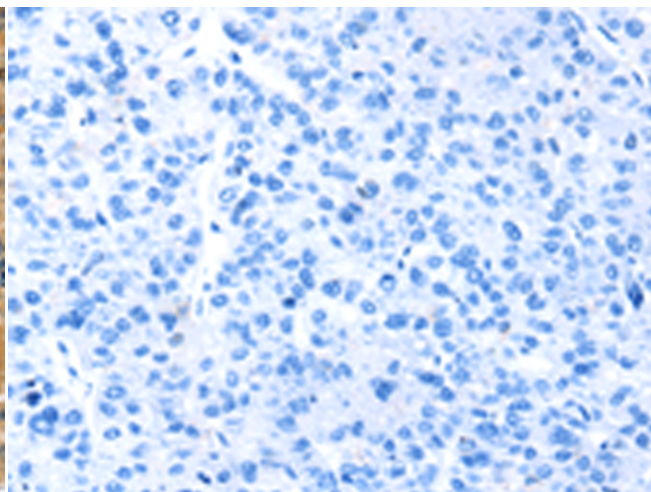
成分: PBS (without Mg²⁺ and Ca²⁺), pH 7.4, 150 mM NaCl, 0.05% Sodium Azide and 40% glycerol

研究领域: Cancer, Cell Biology

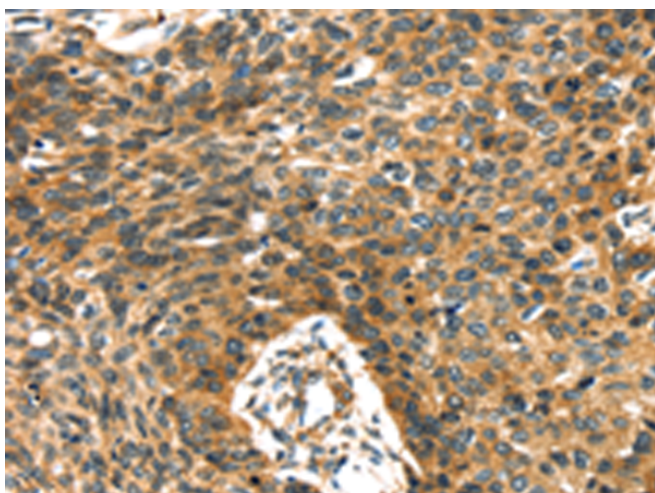
储存和运输: Store at -20°C. Avoid repeated freezing and thawing



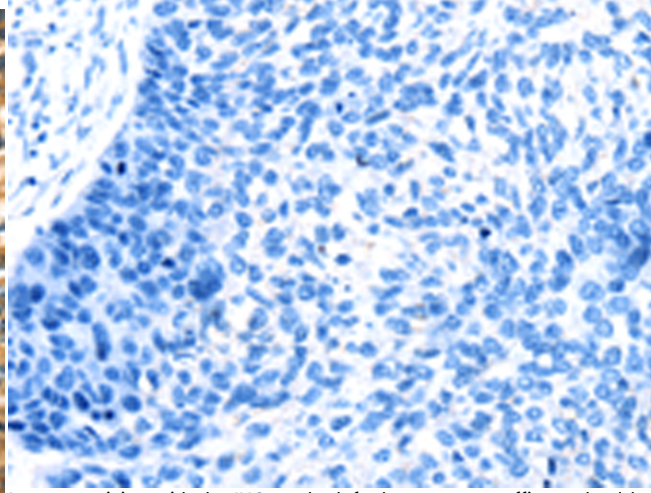
Immunohistochemistry analysis of paraffin embedded Human liver cancer tissue using 221059 (PRSS50 Antibody) at a dilution of 1/30 (Cytoplasm).



In comparison with the IHC on the left, the same paraffin-embedded Human liver cancer tissue is first treated with the synthetic peptide and then with 221059 (Anti-PRSS50 Antibody) at dilution 1/30.



The image on the left is immunohistochemistry of paraffin-embedded Human esophagus cancer tissue using 221059 (Anti-PRSS50 Antibody) at a dilution of 1/30.



In comparison with the IHC on the left, the same paraffin-embedded Human esophagus cancer tissue is first treated with synthetic peptide and then with D262424 (Anti-PRSS50 Antibody) at dilution 1/30.



Gel: 8%SDS-PAGE, Lysate: 40 µg;
Lane: Hepg2 cells;
Primary antibody: 221059 (PRSS50 Antibody) at dilution 1/450;
Secondary antibody: Goat anti rabbit IgG at 1/8000 dilution;
Exposure time: 3 minutes



Product Description

Pioneering GTPase and Oncogene Product Development since 2010
