

## PRPF8 RABBIT PAB

货号: S221811

产品全名: PRPF8 兔多抗

基因符号: PRP8; RP13; HPRP8; PRPC8; SNRNP220

**UNIPROT ID:** Q6P2Q9 (Gene Accession - NP\_006436)

**背景:** Pre-mRNA splicing occurs in 2 sequential transesterification steps. The protein encoded by this gene is a component of both U2- and U12-dependent spliceosomes, and found to be essential for the catalytic step II in pre-mRNA splicing process. It contains several WD repeats, which function in protein-protein interactions. This protein has a sequence similarity to yeast Prp8 protein. This gene is a candidate gene for autosomal dominant retinitis pigmentosa.

**抗原:** Synthetic peptide of human PRPF8

**经过测试的应用:** ELISA, WB, IHC

**推荐稀释比:** IHC: 20-100;WB: 500-2000;ELISA: 5000-10000

**种属反应性:** Rabbit

**克隆性:** Rabbit Polyclonal

**亚型:** Immunogen-specific rabbit IgG

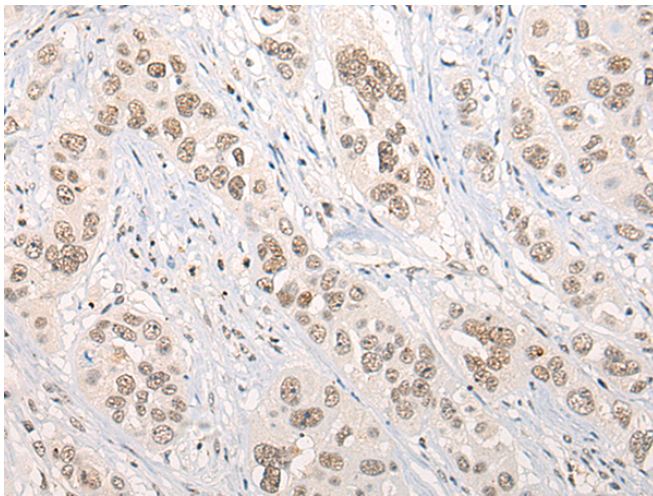
**纯化:** Antigen affinity purification

**种属反应性:** Human, Mouse

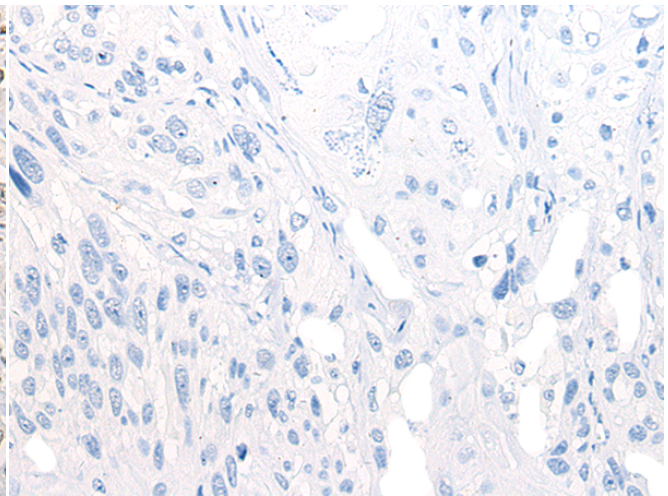
**成分:** PBS (without Mg<sup>2+</sup> and Ca<sup>2+</sup>), pH 7.4, 150 mM NaCl, 0.05% Sodium Azide and 40% glycerol

**研究领域:** Epigenetics and Nuclear Signaling, Neuroscience

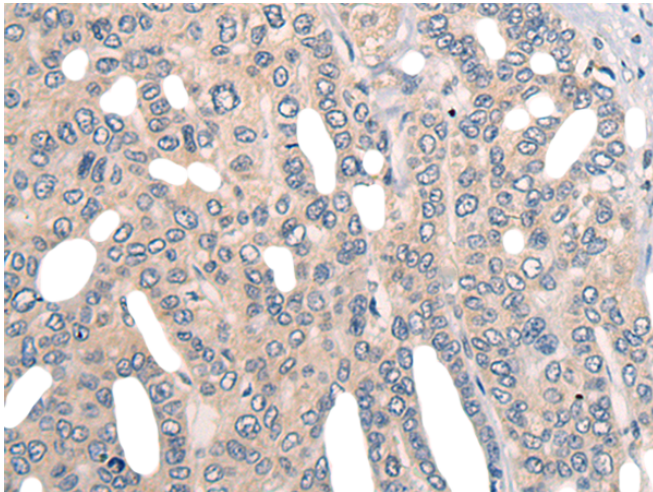
**储存和运输:** Store at -20°C. Avoid repeated freezing and thawing



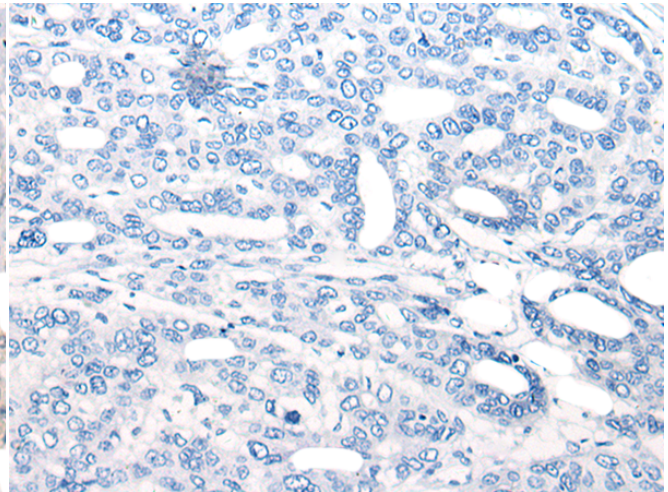
Immunohistochemistry analysis of paraffin embedded Human esophagus cancer tissue using 221811 (PRPF8 Antibody) at a dilution of 1/20 (Nucleus or Cytoplasm).



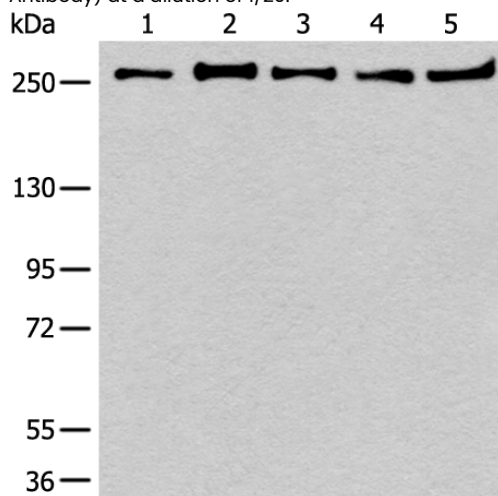
In comparison with the IHC on the left, the same paraffin-embedded Human esophagus cancer tissue is first treated with the synthetic peptide and then with 221811 (Anti-PRPF8 Antibody) at dilution 1/20.



The image on the left is immunohistochemistry of paraffin-embedded Human liver cancer tissue using 221811 (Anti-PRPF8 Antibody) at a dilution of 1/20.



In comparison with the IHC on the left, the same paraffin-embedded Human liver cancer tissue is first treated with synthetic peptide and then with D263565 (Anti-PRPF8 Antibody) at dilution 1/20.



Gel: 6% SDS-PAGE, Lysate: 40 µg;  
Lane 1-5: 293T, K562, Raji, HeLa and NIH/3T3 cell lysates;  
Primary antibody: 221811 (PRPF8 Antibody) at dilution 1/600;  
Secondary antibody: Goat anti rabbit IgG at 1/8000 dilution;  
Exposure time: 50 seconds



# Product Description

Pioneering GTPase and Oncogene Product Development since 2010

---