

PRPF8 RABBIT MAB

货号: N262772

产品全名: PRPF8 兔单克隆抗体

基因符号 HPRP8; p220; PRP8; PRPC8; Prpf8; RP13; SNRNP220

UNIPROT ID: Q6P2Q9

背景: Central component of the spliceosome, which may play a role in aligning the pre-mRNA 5'- and 3'-exons for ligation. Interacts with U5 snRNA, and with pre-mRNA 5'-splice sites in B spliceosomes and 3'-splice sites in C spliceosomes.

抗原: A synthetic peptide of human PRPF8

经过测试的应用: WB,IHC-P

推荐稀释比: WB: 1/500-1/1000 IHC: 1/50-1/100

种属反应性: Rabbit

克隆性: Rabbit Monoclonal

克隆编号: R06-117

分子量: Calculated MW: 274 kDa; Observed MW: 274 kDa

亚型: IgG

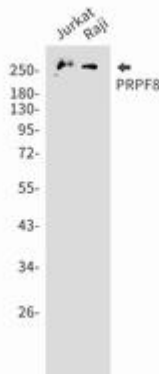
纯化: Affinity Purified

种属反应性: Human

成分: PBS (without Mg²⁺ and Ca²⁺), pH 7.3 containing 50% glycerol, 0.5% BSA and 0.02% sodium azide

研究领域: Epigenetics and Nuclear Signaling

储存和运输: Store at -20°C. Avoid repeated freezing and thawing



Western blot analysis of PRPF8 in Jurkat, Raji lysates using PRPF8 antibody.