

PRPF31 RABBIT MAB

货号: N261573

产品全名: PRPF31 兔单克隆抗体

基因符号 Protein 61K; hPrp31; U4/U6 snRNP 61 kDa 蛋白

UNIPROT ID: Q8WWY3

背景: Involved in pre-mRNA splicing as component of the spliceosome.

抗原: A synthetic peptide of human PRPF31

经过测试的应用: WB, ICC/IF

推荐稀释比: WB: 1/500-1/1000 IF: 1/50-1/200

种属反应性: Rabbit

克隆性: Rabbit Monoclonal

克隆编号: R01-7F1

分子量: Calculated MW: 55 kDa; Observed MW: 55 kDa

亚型: IgG

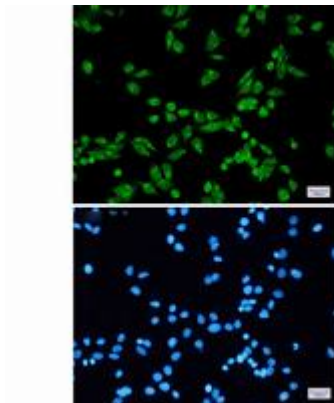
纯化: Affinity Purified

种属反应性: Human, Mouse and Rat

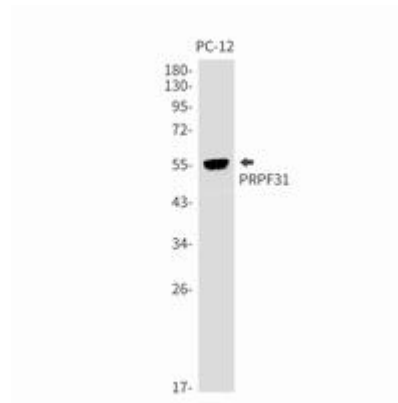
成分: PBS (without Mg²⁺ and Ca²⁺), pH 7.3 containing 50% glycerol, 0.5% BSA and 0.02% sodium azide

研究领域: Epigenetics and Nuclear Signaling

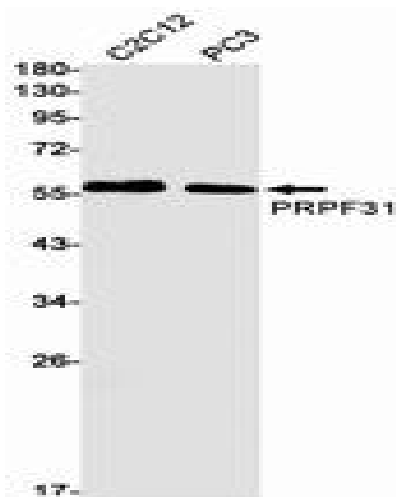
储存和运输: Store at -20°C. Avoid repeated freezing and thawing



Immunocytochemistry analysis of PRPF31 (green) in HeLa using PRPF31 antibody, and DAPI (blue)



Western blot analysis of PRPF31 in PC-12 lysates using PRPF31 antibody.



Western blot analysis of PRPF31 in C2C12, PC-3 lysates using PRPF31 antibody.