

## PROTEIN CASP RABBIT MAB

货号: N263509

产品全名: Protein CASP 兔单克隆抗体

基因符号 CDP; CUX; p75; CASP; CDPI; COY1; Clox; GDDI; p100; p110; p200; CUTLI; GOLIM6; CDP/Cut; Cux/CDP; Nbla10317

**UNIPROT ID:** Q13948

背景: May be involved in intra-Golgi retrograde transport.

抗原: Recombinant protein of human Protein CASP

经过测试的应用: WB, ICC/IF, IP

推荐稀释比: WB: 1/500-1/1000 IF: 1/50-1/200 IP: 1/20

种属反应性: Rabbit

克隆性: Rabbit Monoclonal

克隆编号: R03-5F8

分子量: Calculated MW: 77 kDa; Observed MW: 77 kDa

亚型: IgG

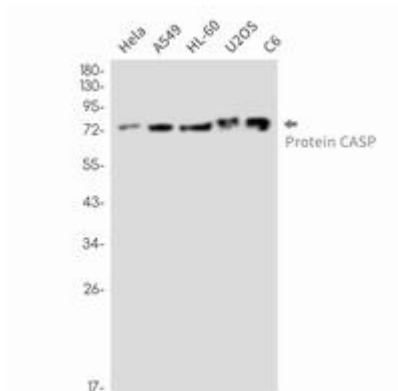
纯化: Affinity Purified

种属反应性: Human, Mouse and Rat

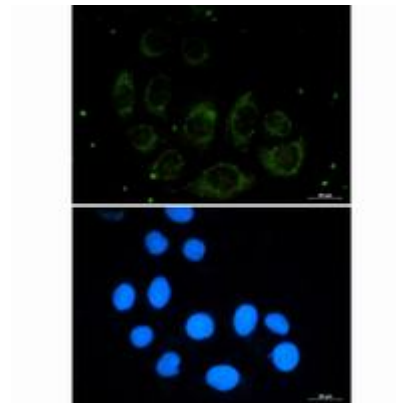
成分: PBS (without Mg<sup>2+</sup> and Ca<sup>2+</sup>), pH 7.3 containing 50% glycerol, 0.5% BSA and 0.02% sodium azide

研究领域: -

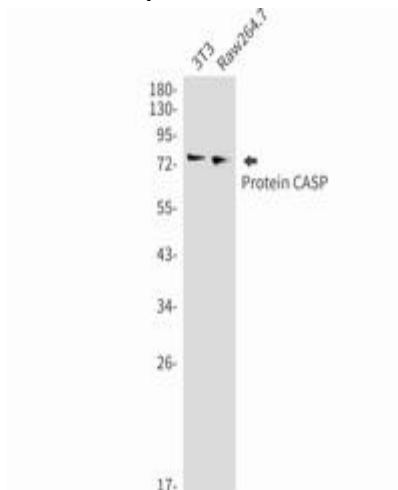
储存和运输: Store at -20°C. Avoid repeated freezing and thawing



Western blot analysis of Protein CASP in HeLa, A549, HL-60, U2OS, C6 lysates using Protein CASP antibody



Immunocytochemistry analysis of Protein CASP (green) in A549 using Protein CASP antibody, and DAPI (blue).



Western blot analysis of Protein CASP in 3T3, Raw264.7 lysates using Protein CASP antibody.