

PROTEASOME BETA 8 (3G3) MOUSE MAB

货号: N261199

产品全名: Proteasome beta 8 (3G3) 小鼠单抗

基因符号 PSMB8; LMP7; PSMB5i; RING10; Y2; Proteasome subunit beta type-8; Low molecular mass protein 7; Macropain subunit C13; Multicatalytic endopeptidase complex subunit C13; Proteasome component C13; Proteasome subunit beta-5i; Really interesting

UNIPROT ID: P28062

背景: The proteasome is a multicatalytic proteinase complex which is characterized by its ability to cleave peptides with Arg, Phe, Tyr, Leu, and Glu adjacent to the leaving group at neutral or slightly basic pH. The proteasome has an ATP-dependent proteolytic activity.

抗原: Purified recombinant fragment of human PSMB8 expressed in E. Coli.

经过测试的应用: WB,IHC-F,IHC-P,ICC/IF

推荐稀释比: WB: 1/500-1/1000 IHC: 1/50-1/100 IF: 1/50-1/200

种属反应性: Mouse

克隆性: Mouse Monoclonal

克隆编号: 3G3-C1-E2

分子量: Calculated MW: 30 kDa; Observed MW: 30 kDa

亚型: IgG1

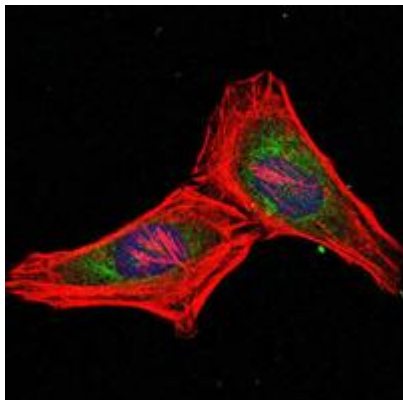
纯化: Ascitic Fluid

种属反应性: Human,Rat

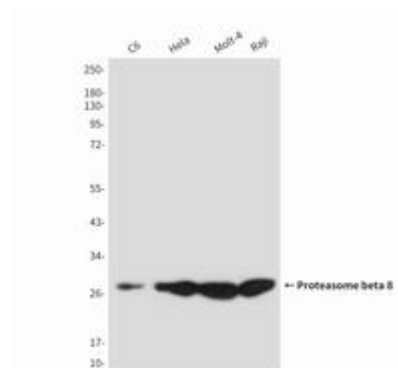
成分: PBS (without Mg²⁺ and Ca²⁺), pH 7.3 containing 50% glycerol, 0.5% BSA and 0.02% sodium azide

研究领域: Cell Biology

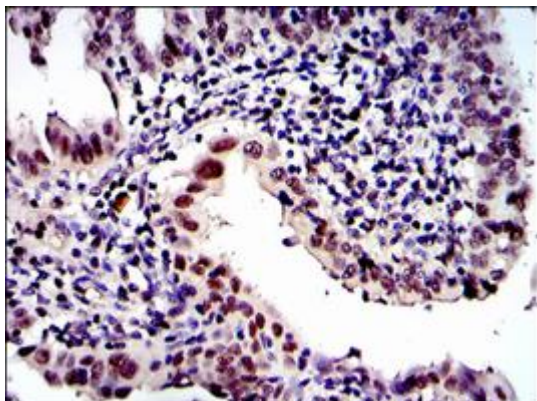
储存和运输: Store at -20°C. Avoid repeated freezing and thawing



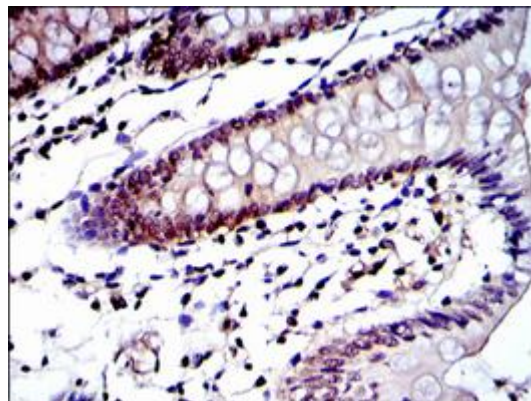
Immunofluorescence analysis of Proteasome beta 8 (3G3) in Hela cells using PSMB8 antibody (green), and DAPI (blue)



Western blot analysis of PSMB8/LMP7 in C6, Hela, Molt4 and Raji lysates using PSMB8/LMP7 antibody.



Immunohistochemistry analysis of paraffin-embedded intima cancer tissues using PSMB8 antibody with DAB staining. High-pressure and temperature Sodium Citrate pH 6.0 was used for antigen retrieval.



Immunohistochemistry analysis of paraffin-embedded colon tissues using Proteasome beta 8 (3G3) antibody. High-pressure and temperature Sodium Citrate pH 6.0 was used for antigen retrieval.