

## PROTEASOME ALPHA 2 RABBIT MAB

货号: N262765

产品全名: Proteasome alpha 2 兔单克隆抗体

基因符号 HC3; PMSA2; Proteasome component C3; PSC2; PSC3; psmA2

**UNIPROT ID:** P25787

背景: The proteasome is a multicatalytic proteinase complex which is characterized by its ability to cleave peptides with Arg, Phe, Tyr, Leu, and Glu adjacent to the leaving group at neutral or slightly basic pH.

抗原: A synthetic peptide of human Proteasome 20S alpha 2

经过测试的应用: WB,IHC-F,IHC-P,ICC/IF

推荐稀释比: WB: 1/500-1/1000 IHC: 1/50-1/100 IF: 1/50-1/200

种属反应性: Rabbit

克隆性: Rabbit Monoclonal

克隆编号: R09-4H8

分子量: Calculated MW: 26 kDa; Observed MW: 26 kDa

亚型: IgG

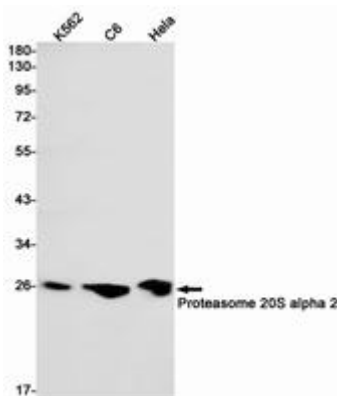
纯化: Affinity Purified

种属反应性: Human, Mouse and Rat

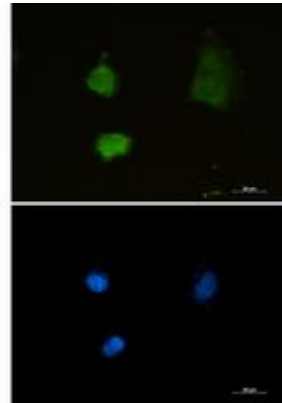
成分: PBS (without Mg<sup>2+</sup> and Ca<sup>2+</sup>), pH 7.3 containing 50% glycerol, 0.5% BSA and 0.02% sodium azide

研究领域: Cell Biology

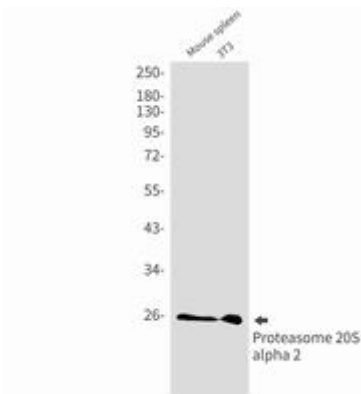
储存和运输: Store at -20°C. Avoid repeated freezing and thawing



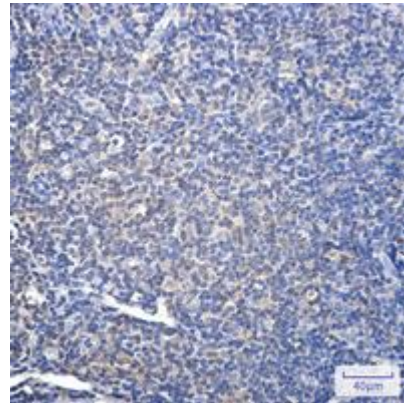
Western blot analysis of Proteasome 20S alpha 2 in K562, C6, HeLa lysates using Proteasome 20S alpha 2 antibody



Immunocytochemistry analysis of Proteasome alpha 2 (green) in U87-MG using Proteasome alpha 2 antibody, and DAPI (blue).



Western blot analysis of Proteasome 20S alpha 2 in mouse spleen, 3T3 lysates using Proteasome 20S alpha 2 antibody.



Immunohistochemistry analysis of paraffin-embedded Human tonsil using Proteasome 20S alpha 2 antibody. High-pressure and temperature Sodium Citrate pH 6.0 was used for antigen retrieval.