

## PROSTATE SPECIFIC ANTIGEN RABBIT PAB

货号: N225074

产品全名: Prostate Specific Antigen 兔多抗

基因符号 KLK3; APS; Prostate-specific antigen; PSA; Gamma-seminoprotein; Semin; Kallikrein-3; P-30 antigen; Semenogelase

**UNIPROT ID:** P07288

**背景:** PSA/KLK3 is a member of the glandular kallikrein subfamily of serine proteases. Upon cleavage of 7 amino-terminal amino acids, it is activated to liquefy semen in the seminal coagulum. Although PSA/KLK3 is produced in healthy individuals, investigators have found abnormally high levels in the blood of men with advanced prostate cancer.

**抗原:** The antiserum was produced against synthesized peptide derived from the Internal region of human KLK3. AA range:131-180

**经过测试的应用:** WB,IHC-P,ELISA

**推荐稀释比:** WB: 1/500-1/1000 IHC: 1/50-1/100 ELISA: 1/10000

**种属反应性:** Rabbit

**克隆性:** Rabbit Polyclonal

**分子量:** Calculated MW: 29 kDa; Observed MW: 29 kDa

**亚型:** IgG

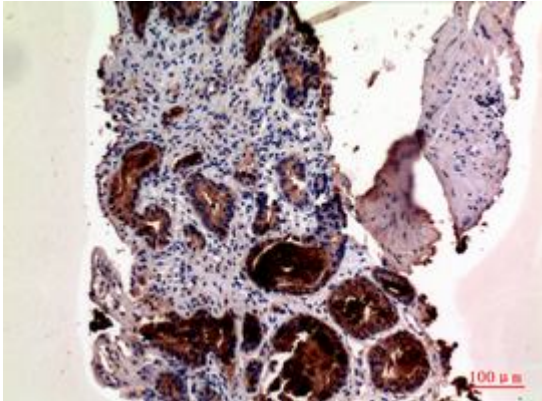
**纯化:** Affinity Purified

**种属反应性:** Human

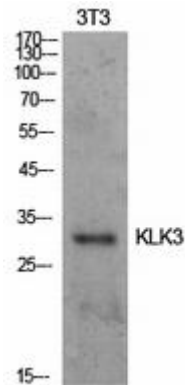
**成分:** PBS (without Mg<sup>2+</sup> and Ca<sup>2+</sup>), pH 7.3 containing 50% glycerol, 0.5% BSA and 0.02% sodium azide

**研究领域:** Neuroscience

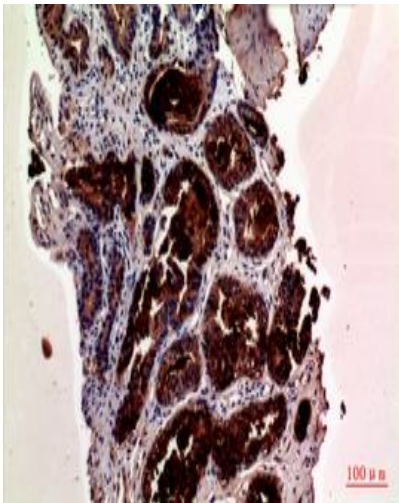
**储存和运输:** Store at -20°C. Avoid repeated freezing and thawing



Immunohistochemistry analysis of paraffin-embedded Human prostate cancer using Prostate Specific Antigen antibody. High-pressure and temperature Sodium Citrate pH 6.0 was used for antigen retrieval.



Western blot analysis of Prostate Specific Antigen in NIH3T3 lysates using Prostate Specific Antigen antibody.



Immunohistochemistry analysis of paraffin-embedded Human prostate cancer using Prostate Specific Antigen antibody. High-pressure and temperature Sodium Citrate pH 6.0 was used for antigen retrieval.