

## PROSTATE SPECIFIC ANTIGEN MOUSE MAB

货号: N261202

产品全名: Prostate Specific Antigen 小鼠单抗

基因符号 KLK3; APS; Prostate-specific antigen; PSA; Gamma-seminoprotein; Semin; Kallikrein-3; P-30 antigen; Semenogelase

**UNIPROT ID:** P07288

背景: PSA/KLK3 is a member of the glandular kallikrein subfamily of serine proteases. Upon cleavage of 7 amino-terminal amino acids, it is activated to liquefy semen in the seminal coagulum. Although PSA/KLK3 is produced in healthy individuals, investigators have found abnormally high levels in the blood of men with advanced prostate cancer.

抗原: Purified recombinant fragment of human KLK3 expressed in E. Coli.

经过测试的应用: WB,FC

推荐稀释比: WB: 1/500-1/1000 FC: 1/50-1/100

种属反应性: Mouse

克隆性: Mouse Monoclonal

克隆编号: 8A12

分子量: Calculated MW: 29 kDa; Observed MW: 37 kDa

亚型: IgG1

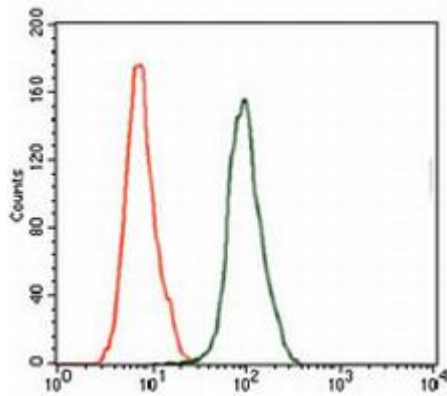
纯化: Ascitic Fluid

种属反应性: Human

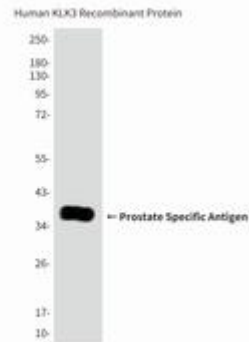
成分: PBS (without Mg<sup>2+</sup> and Ca<sup>2+</sup>), pH 7.3 containing 50% glycerol, 0.5% BSA and 0.02% sodium azide

研究领域: Neuroscience

储存和运输: Store at -20°C. Avoid repeated freezing and thawing



Flow Cytometry analysis of HeLa cells stained with KLK3 antibody (green) and negative control (red).



Western blot analysis of Prostate Specific Antigen in Human KLK3 (AA: 1092) recombinant protein using Prostate Specific Antigen antibody.