

PROHIBITIN RABBIT MAB

货号: N263508

产品全名: Prohibitin 兔单克隆抗体

基因符号 PHB1; HEL-215; HEL-S-54e

UNIPROT ID: P35232

背景: PHB1 is 30kDa tumor suppressor protein involved in cell cycle control. PHB1 has been found in mitochondria, the nucleus and the plasma membrane, as well as extracellularly in circulation. In mitochondria prohibitins mainly exist as membrane-bound ring complexes and function as chaperones maintaining mitochondrial protein stability during protein synthesis and transportation.

抗原: A synthetic peptide of human Prohibitin

经过测试的应用: WB,IHC-F,IHC-P,ICC/IF,IP

推荐稀释比: WB: 1/500-1/1000 IHC: 1/50-1/100 IF: 1/50-1/200 IP: 1/20

种属反应性: Rabbit

克隆性: Rabbit Monoclonal

克隆编号: R07-2G1

分子量: Calculated MW: 30 kDa; Observed MW: 30 kDa

亚型: IgG

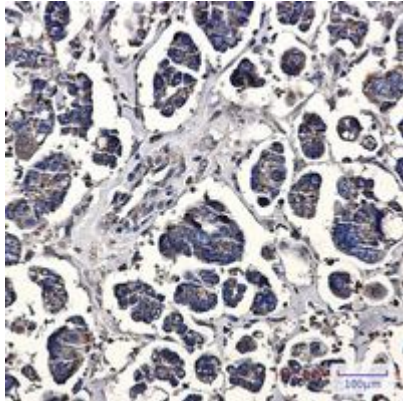
纯化: Affinity Purified

种属反应性: Human,Rat

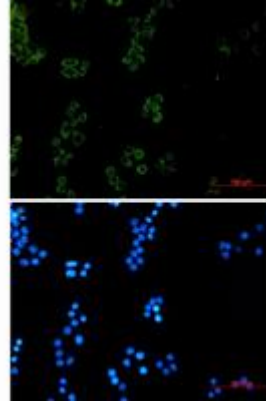
成分: PBS (without Mg²⁺ and Ca²⁺), pH 7.3 containing 50% glycerol, 0.5% BSA and 0.02% sodium azide

研究领域: Cell Biology

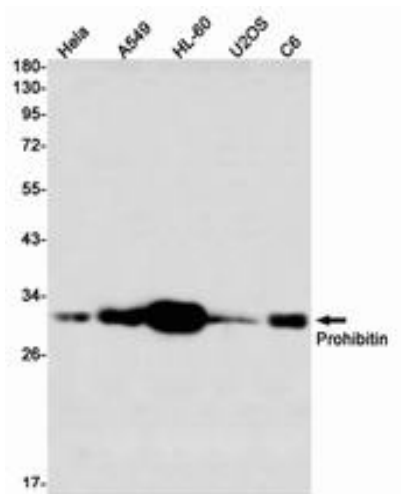
储存和运输: Store at -20°C. Avoid repeated freezing and thawing



Immunohistochemistry analysis of paraffin-embedded Human Cholangiocarcinoma using Prohibitin antibody. High-pressure and temperature Sodium Citrate pH 6.0 was used for antigen retrieval.



Immunocytochemistry analysis of Prohibitin (green) in Hela using Prohibitin antibody, and DAPI (blue).



Western blot analysis of Prohibitin in Hela, A549, HL-60, U2OS, C6 lysates using Prohibitin antibody.