

PROFILIN 1 RABBIT MAB

货号: N261664

产品全名: Profilin 1 兔单克隆抗体

基因符号 Epididymis tissue protein Li 184a; Profilin 1

UNIPROT ID: P07737

背景: Binds to actin and affects the structure of the cytoskeleton. At high concentrations, profilin prevents the polymerization of actin, whereas it enhances it at low concentrations. By binding to PIP₂, it inhibits the formation of IP₃ and DG.

抗原: A synthetic peptide of human Profilin 1

经过测试的应用: WB,IHC-F,IHC-P,ICC/IF,IP

推荐稀释比: WB: 1/500-1/1000 IHC: 1/50-1/100 IF: 1/50-1/200 IP: 1/20

种属反应性: Rabbit

克隆性: Rabbit Monoclonal

克隆编号: R06-6H7

分子量: Calculated MW: 15 kDa; Observed MW: 15 kDa

亚型: IgG

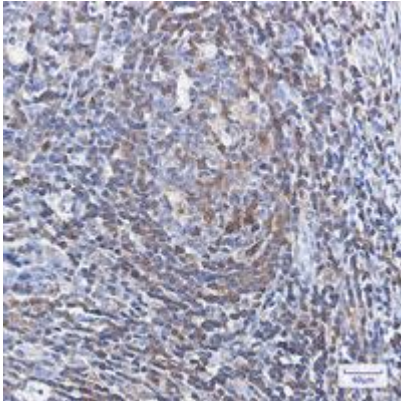
纯化: Affinity Purified

种属反应性: Human, Mouse and Rat

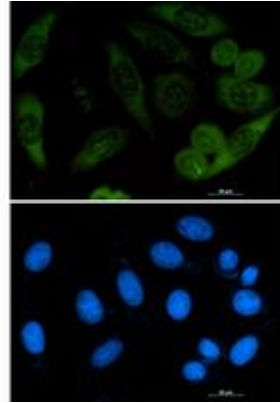
成分: PBS (without Mg²⁺ and Ca²⁺), pH 7.3 containing 50% glycerol, 0.5% BSA and 0.02% sodium azide

研究领域: Tags & Cell Markers

储存和运输: Store at -20°C. Avoid repeated freezing and thawing



Immunohistochemistry analysis of paraffin-embedded Human tonsil using Profilin 1 antibody. High-pressure and temperature Sodium Citrate pH 6.0 was used for antigen retrieval.



Immunocytochemistry analysis of Profilin 1 (green) in A549 using Profilin 1 antibody, and DAPI (blue).



Western blot analysis of Profilin 1 in C6, 3T3, HeLa lysates using Profilin 1 antibody.