

## PRKRA RABBIT PAB

货号: S219322

产品全名: PRKRA 兔多抗

基因符号: RAX; PACT; DYT16; HSD14

**UNIPROT ID:** O75569 (Gene Accession - BC009470)

**背景:** This gene encodes a protein kinase activated by double-stranded RNA which mediates the effects of interferon in response to viral infection. Mutations in this gene have been associated with dystonia. Alternative splicing results in multiple transcript variants.

**抗原:** Fusion protein of human PRKRA

**经过测试的应用:** ELISA, WB, IHC

**推荐稀释比:** IHC: 50-200;WB: 500-2000;ELISA: 5000-10000

**种属反应性:** Rabbit

**克隆性:** Rabbit Polyclonal

**亚型:** Immunogen-specific rabbit IgG

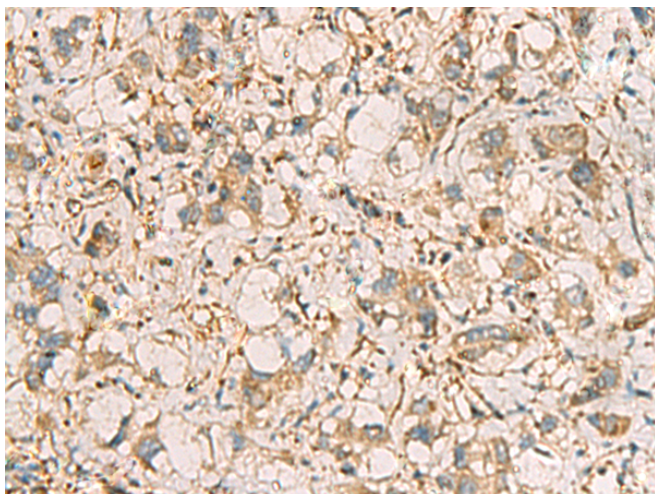
**纯化:** Antigen affinity purification

**种属反应性:** Human, Mouse, Rat

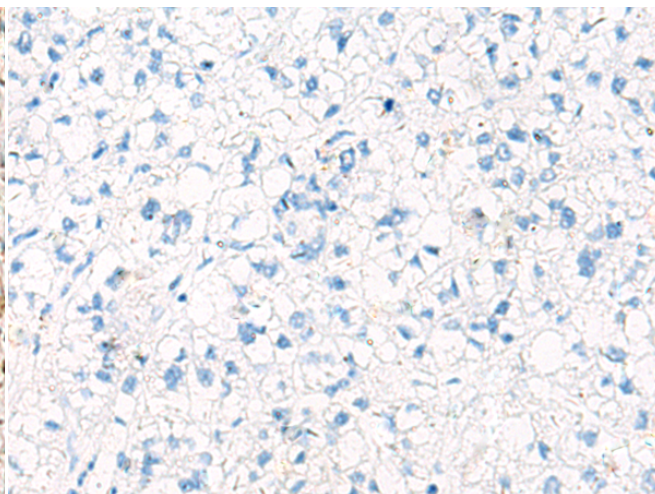
**成分:** PBS (without Mg<sup>2+</sup> and Ca<sup>2+</sup>), pH 7.4, 150 mM NaCl, 0.05% Sodium Azide and 40% glycerol

**研究领域:** Epigenetics and Nuclear Signaling

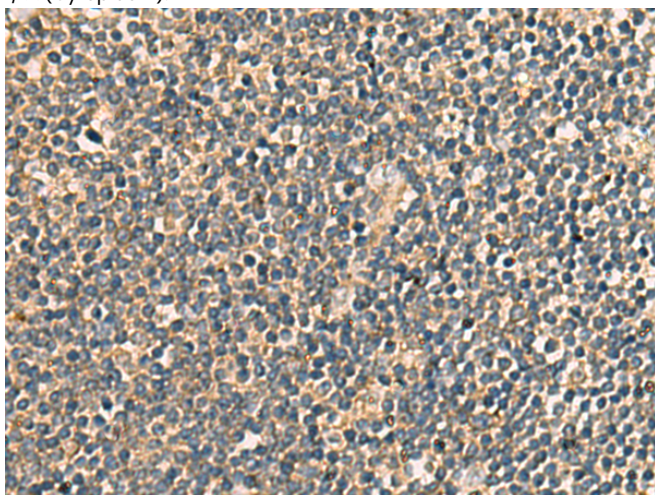
**储存和运输:** Store at -20°C. Avoid repeated freezing and thawing



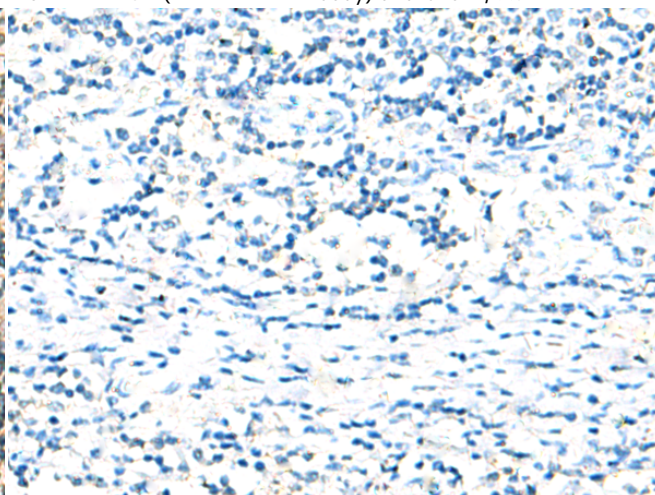
Immunohistochemistry analysis of paraffin embedded Human liver cancer tissue using 219322 (PRKRA Antibody) at a dilution of 1/65 (Cytoplasm).



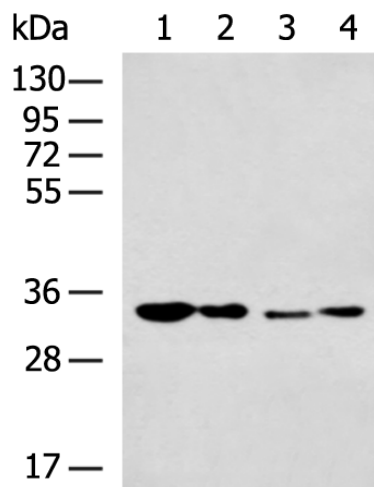
In comparison with the IHC on the left, the same paraffin-embedded Human liver cancer tissue is first treated with the fusion protein and then with 219322 (Anti-PRKRA Antibody) at dilution 1/65.



The image on the left is immunohistochemistry of paraffin-embedded Human tonsil tissue using 219322 (Anti-PRKRA Antibody) at a dilution of 1/65.



In comparison with the IHC on the left, the same paraffin-embedded Human tonsil tissue is first treated with fusion protein and then with D226390 (Anti-PRKRA Antibody) at dilution 1/65.



Gel: 8%SDS-PAGE, Lysate: 40 µg;  
 Lane 1-4: Mouse testis tissue, Hela cell, TM4 cell, HepG2 cell lysates;  
 Primary antibody: 219322 (PRKRA Antibody) at dilution 1/800;  
 Secondary antibody: HRP-conjugated Goat anti rabbit IgG at 1/5000 dilution;  
 Exposure time: 1 minute



# Product Description

Pioneering GTPase and Oncogene Product Development since 2010

---