

PRKDC RABBIT PAB

货号: S220511

产品全名: PRKDC 兔多抗

基因符号: HYRC; p350; DNAPK; DNPk1; HYRC1; IMD26; XRCC7; DNA-PKcs

UNIPROT ID: P78527 (Gene Accession - NP_001075109)

背景: This gene encodes the catalytic subunit of the DNA-dependent protein kinase (DNA-PK). It functions with the Ku70/Ku80 heterodimer protein in DNA double strand break repair and recombination. The protein encoded is a member of the PI3/PI4-kinase family.

抗原: Synthetic peptide of human PRKDC

经过测试的应用: ELISA, WB, IHC

推荐稀释比: IHC: 20-100;WB: 200-1000;ELISA: 5000-10000

种属反应性: Rabbit

克隆性: Rabbit Polyclonal

亚型: Immunogen-specific rabbit IgG

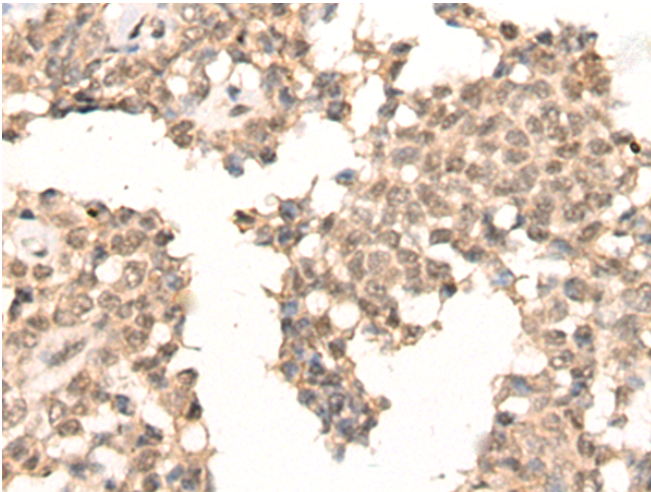
纯化: Antigen affinity purification

种属反应性: Human, Mouse

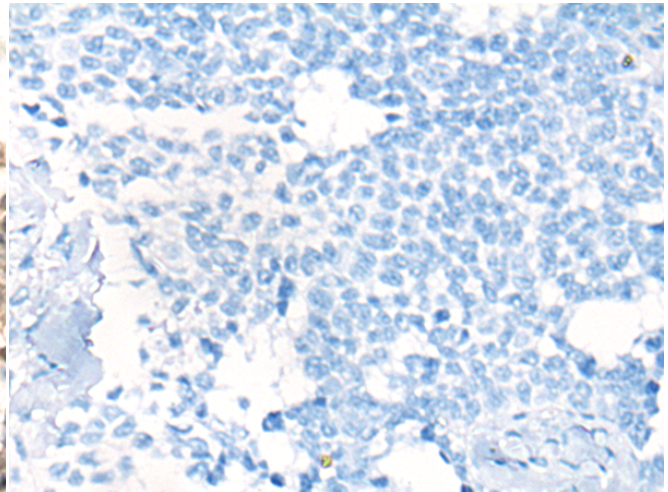
成分: PBS (without Mg²⁺ and Ca²⁺), pH 7.4, 150 mM NaCl, 0.05% Sodium Azide and 40% glycerol

研究领域: Epigenetics and Nuclear Signaling

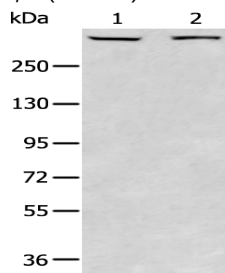
储存和运输: Store at -20°C. Avoid repeated freezing and thawing



Immunohistochemistry analysis of paraffin embedded Human ovarian cancer tissue using 220511 (PRKDC Antibody) at a dilution of 1/25 (Nucleus).



In comparison with the IHC on the left, the same paraffin-embedded Human ovarian cancer tissue is first treated with the synthetic peptide and then with 220511 (Anti-PRKDC Antibody) at dilution 1/25.



Gel: 6%SDS-PAGE, Lysate: 40 µg;

Lane 1-2: 293T and K562 cell;

Primary antibody: 220511 (PRKDC Antibody) at dilution 1/200;

Secondary antibody: Goat anti rabbit IgG at 1/8000 dilution;

Exposure time: 20 seconds