

## PRKD3 RABBIT PAB

货号: S220075

产品全名: PRKD3 兔多抗

基因符号 EPK2; PKD3; PRKCN; PKC-NU; nPKC-NU

**UNIPROT ID:** O94806 (Gene Accession - NP\_005804)

**背景:** Protein kinase C (PKC) is a family of serine- and threonine-specific protein kinases that can be activated by calcium and the second messenger diacylglycerol. PKC family members phosphorylate a wide variety of protein targets and are known to be involved in diverse cellular signaling pathways. PKC family members also serve as major receptors for phorbol esters, a class of tumor promoters. Each member of the PKC family has a specific expression profile and is believed to play a distinct role. The protein encoded by this gene is one of the PKC family members.

**抗原:** Synthetic peptide of human PRKD3

**经过测试的应用:** ELISA, WB, IHC

**推荐稀释比:** IHC: 50-200;WB: 200-1000;ELISA: 1000-2000

**种属反应性:** Rabbit

**克隆性:** Rabbit Polyclonal

**亚型:** Immunogen-specific rabbit IgG

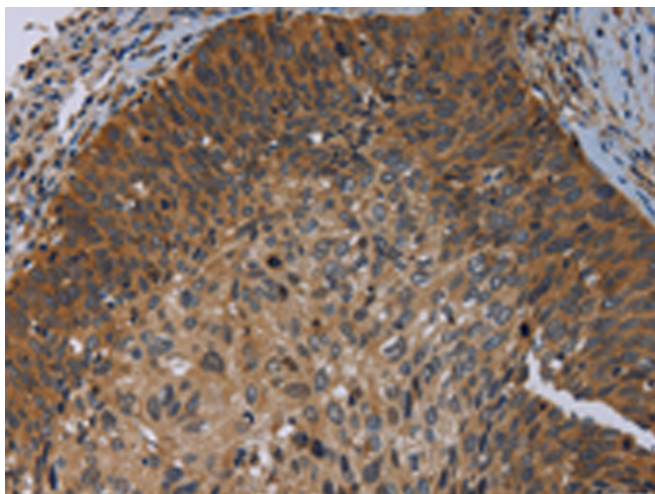
**纯化:** Antigen affinity purification

**种属反应性:** Human, Mouse

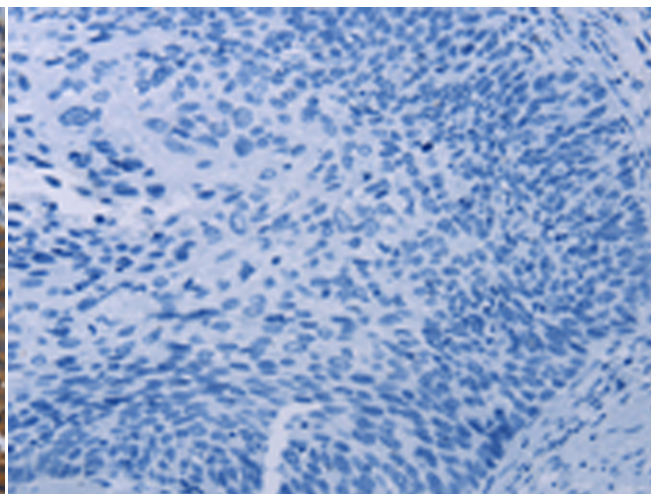
**成分:** PBS (without Mg<sup>2+</sup> and Ca<sup>2+</sup>), pH 7.4, 150 mM NaCl, 0.05% Sodium Azide and 40% glycerol

**研究领域:** Signal Transduction

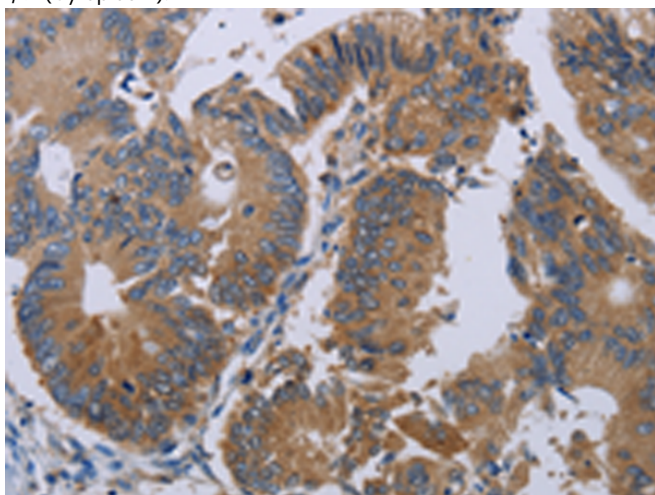
**储存和运输:** Store at -20°C. Avoid repeated freezing and thawing



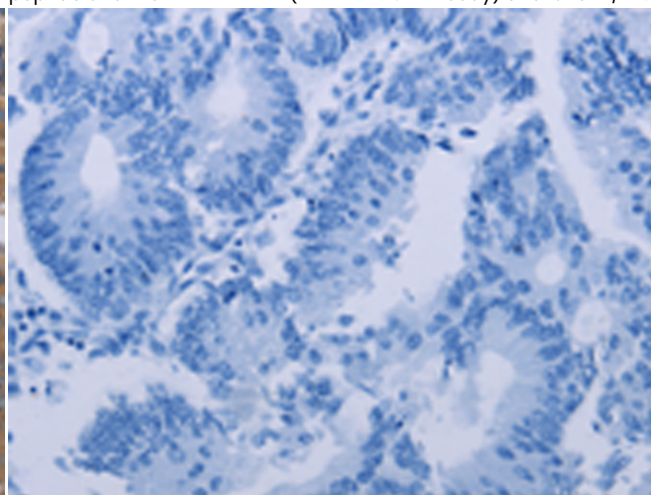
Immunohistochemistry analysis of paraffin embedded Human cervical cancer tissue using 220075 (PRKD3 Antibody) at a dilution of 1/50 (Cytoplasm).



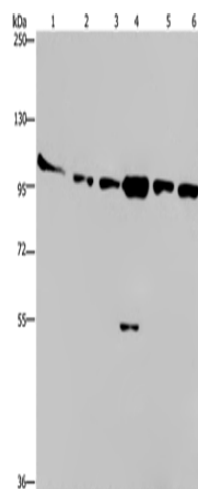
In comparison with the IHC on the left, the same paraffin-embedded Human cervical cancer tissue is first treated with the synthetic peptide and then with 220075 (Anti-PRKD3 Antibody) at dilution 1/50.



The image on the left is immunohistochemistry of paraffin-embedded Human colon cancer tissue using 220075 (Anti-PRKD3 Antibody) at a dilution of 1/50.



In comparison with the IHC on the left, the same paraffin-embedded Human colon cancer tissue is first treated with synthetic peptide and then with D260912 (Anti-PRKD3 Antibody) at dilution 1/50.



Gel: 6% SDS-PAGE, Lysate: 40  $\mu$ g;  
 Lane 1-6: Human testis tissue, K562 cells, A549 cells, Raji cells, NIH/3T3 cells, HeLa cells;  
 Primary antibody: 220075 (PRKD3 Antibody) at dilution 1/200;  
 Secondary antibody: Goat anti rabbit IgG at 1/8000 dilution;  
 Exposure time: 10 minutes



# Product Description

Pioneering GTPase and Oncogene Product Development since 2010

---