

PRKCSH RABBIT PAB

货号: S219381

产品全名: PRKCSH 兔多抗

基因符号: G11B; PCLD; PLDI; G19P1; PCLDI; PKCSH; AGE-R2; VASAP-60

UNIPROT ID: P14314 (Gene Accession - BC013586)

背景: This gene encodes the beta-subunit of glucosidase II, an N-linked glycan-processing enzyme in the endoplasmic reticulum. The encoded protein is an acidic phosphoprotein known to be a substrate for protein kinase C. Mutations in this gene have been associated with the autosomal dominant polycystic liver disease. Alternative splicing results in multiple transcript variants.

抗原: Fusion protein of human PRKCSH

经过测试的应用: ELISA, WB, IHC

推荐稀释比: IHC: 50-200;WB: 500-2000;ELISA: 5000-10000

种属反应性: Rabbit

克隆性: Rabbit Polyclonal

亚型: Immunogen-specific rabbit IgG

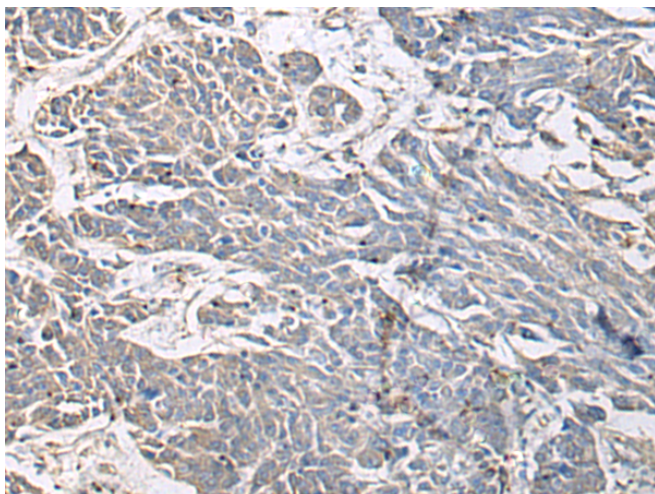
纯化: Antigen affinity purification

种属反应性: Human, Mouse

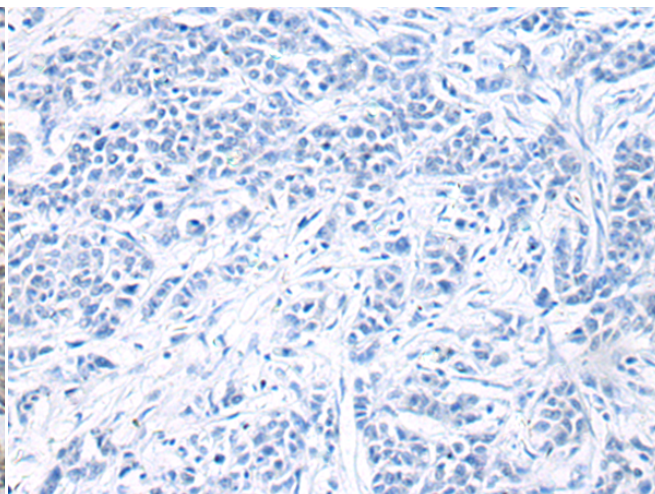
成分: PBS (without Mg²⁺ and Ca²⁺), pH 7.4, 150 mM NaCl, 0.05% Sodium Azide and 40% glycerol

研究领域: Signal Transduction

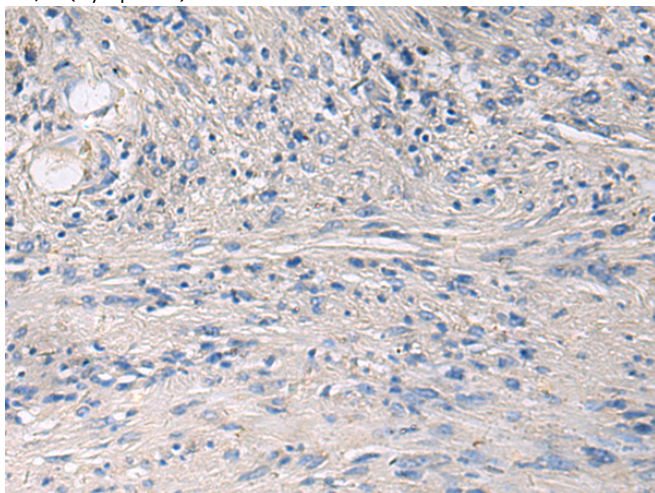
储存和运输: Store at -20°C. Avoid repeated freezing and thawing



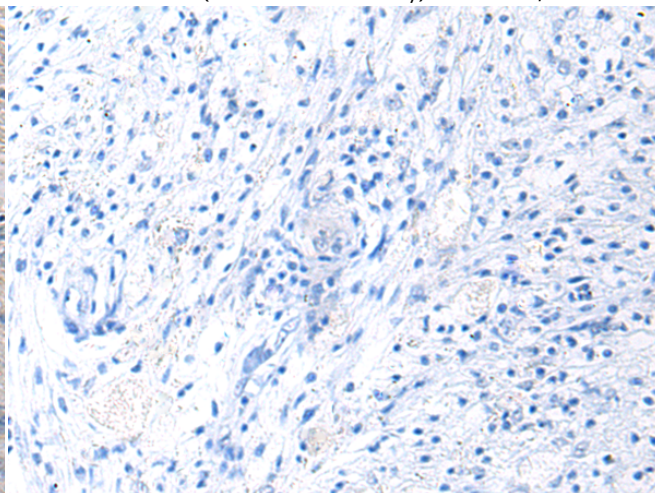
Immunohistochemistry analysis of paraffin embedded Human colorectal cancer tissue using 219381 (PRKCSH Antibody) at a dilution of 1/65 (Cytoplasm).



In comparison with the IHC on the left, the same paraffin-embedded Human colorectal cancer tissue is first treated with the fusion protein and then with 219381 (Anti-PRKCSH Antibody) at dilution 1/65.

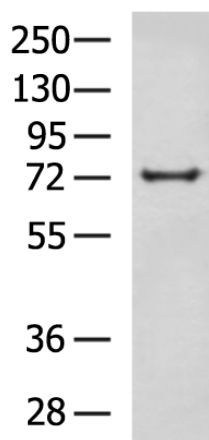


The image on the left is immunohistochemistry of paraffin-embedded Human brain tissue using 219381 (Anti-PRKCSH Antibody) at a dilution of 1/65.



In comparison with the IHC on the left, the same paraffin-embedded Human brain tissue is first treated with fusion protein and then with D226579 (Anti-PRKCSH Antibody) at dilution 1/65.

kDa



Gel: 8% SDS-PAGE, Lysate: 40 µg;
Lane: Mouse brain tissue lysate;
Primary antibody: 219381 (PRKCSH Antibody) at dilution 1/600;
Secondary antibody: HRP-conjugated Goat anti rabbit IgG at 1/5000 dilution;
Exposure time: 1 minute



Product Description

Pioneering GTPase and Oncogene Product Development since 2010
