

## PRKACB RABBIT PAB

货号: S222375

产品全名: PRKACB 兔多抗

基因符号: PKACB; PKA C-beta

**UNIPROT ID:** P22694 (Gene Accession - NP\_002722)

**背景:** The protein encoded by this gene is a member of the serine/threonine protein kinase family. The encoded protein is a catalytic subunit of cAMP (cyclic AMP)-dependent protein kinase, which mediates signalling through cAMP. cAMP signaling is important to a number of processes, including cell proliferation and differentiation. Multiple alternatively spliced transcript variants encoding distinct isoforms have been observed.

**抗原:** Synthetic peptide of human PRKACB

**经过测试的应用:** ELISA, WB, IHC

**推荐稀释比:** IHC: 50-100;WB: 200-1000;ELISA: 5000-10000

**种属反应性:** Rabbit

**克隆性:** Rabbit Polyclonal

**亚型:** Immunogen-specific rabbit IgG

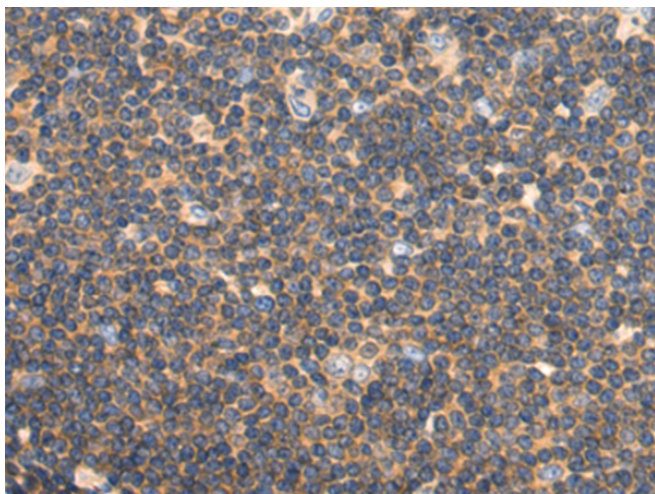
**纯化:** Antigen affinity purification

**种属反应性:** Human, Mouse, Rat

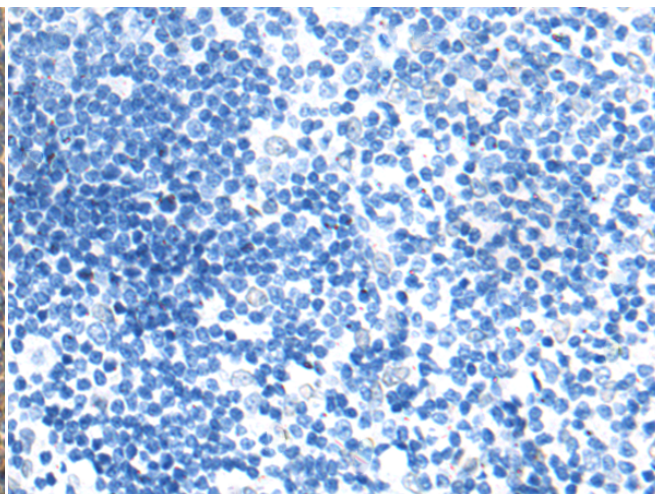
**成分:** PBS (without Mg<sup>2+</sup> and Ca<sup>2+</sup>), pH 7.4, 150 mM NaCl, 0.05% Sodium Azide and 40% glycerol

**研究领域:** Signal Transduction, Cancer, Metabolism

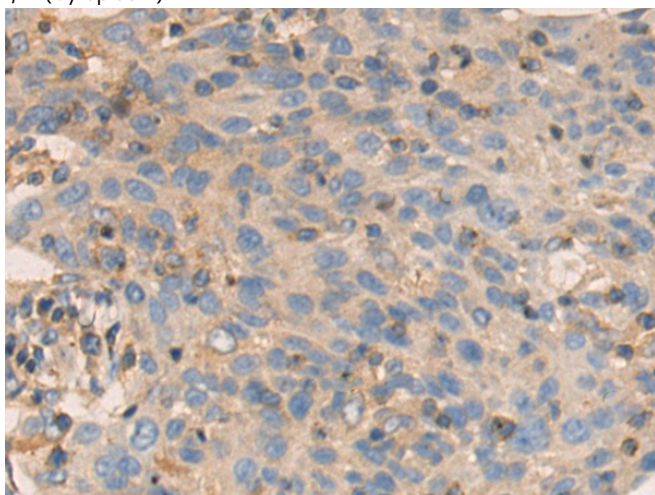
**储存和运输:** Store at -20°C. Avoid repeated freezing and thawing



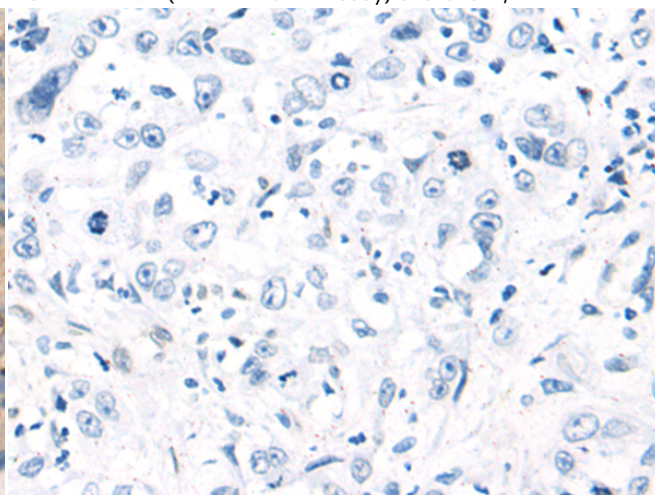
Immunohistochemistry analysis of paraffin embedded Human tonsil tissue using 222375(PRKACB Antibody) at a dilution of 1/50(Cytoplasm).



In comparison with the IHC on the left, the same paraffin-embedded Human tonsil tissue is first treated with the synthetic peptide and then with 222375(Anti-PRKACB Antibody) at dilution 1/50.

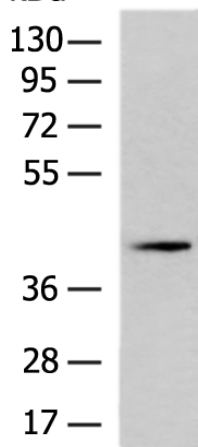


The image on the left is immunohistochemistry of paraffin-embedded Human cervical cancer tissue using 222375(Anti-PRKACB Antibody) at a dilution of 1/50.



In comparison with the IHC on the left, the same paraffin-embedded Human cervical cancer tissue is first treated with synthetic peptide and then with D264496(Anti-PRKACB Antibody) at dilution 1/50.

kDa



Gel: 8%SDS-PAGE, Lysate: 40 µg;  
Lane: Mouse testis tissue lysate;  
Primary antibody: 222375(PRKACB Antibody) at dilution 1/300;  
Secondary antibody: HRP-conjugated Goat anti rabbit IgG at 1/5000 dilution;  
Exposure time: 30 seconds



# Product Description

Pioneering GTPase and Oncogene Product Development since 2010

---