

PRESENILIN 1 RABBIT MAB

货号: N262756

产品全名: Presenilin 1 兔单克隆抗体

基因符号 PSEN1; AD3; PS1; PSNLI; Presenilin-1; PS-1; Protein S182

UNIPROT ID: P49768

背景: Probable catalytic subunit of the gamma-secretase complex, an endoprotease complex that catalyzes the intramembrane cleavage of integral membrane proteins such as Notch receptors and APP (beta-amyloid precursor protein). Requires the other members of the gamma-secretase complex to have a protease activity.

抗原: A synthetic peptide of human Presenilin 1

经过测试的应用: WB, ICC/IF, IP

推荐稀释比: WB: 1/500-1/1000 IF: 1/50-1/200 IP: 1/20

种属反应性: Rabbit

克隆性: Rabbit Monoclonal

克隆编号: R05-4D4

分子量: Calculated MW: 53 kDa; Observed MW: 20 kDa

亚型: IgG

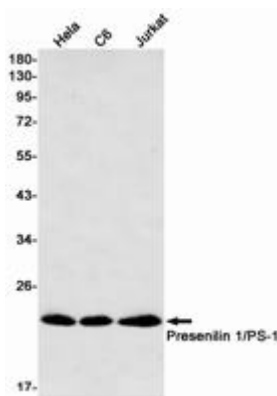
纯化: Affinity Purified

种属反应性: Human, Mouse and Rat

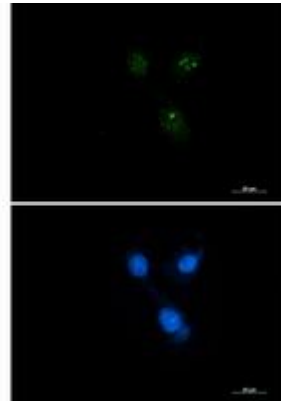
成分: PBS (without Mg²⁺ and Ca²⁺), pH 7.3 containing 50% glycerol, 0.5% BSA and 0.02% sodium azide

研究领域: Neuroscience & Alzheimer's disease

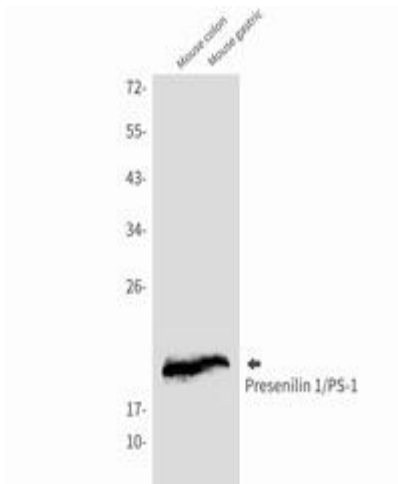
储存和运输: Store at -20°C. Avoid repeated freezing and thawing



Western blot analysis of Presenilin 1/PS1 in HeLa, C6, Jurkat lysates using Presenilin 1/PS1 antibody



Immunocytochemistry analysis of Presenilin 1 (green) in SKOV-3 using Presenilin 1 antibody, and DAPI (blue).



Western blot analysis of Presenilin 1/PS1 in mouse colon, mouse gastric lysates using Presenilin 1/PS1 antibody.