

PREPL RABBIT PAB

货号: S219280

产品全名: PREPL 兔多抗

基因符号: CMS22

UNIPROT ID: Q4J6C6 (Gene Accession - BC013193)

背景: The protein encoded by this gene belongs to the prolyl oligopeptidase subfamily of serine peptidases. Mutations in this gene have been associated with hypotonia-cystinuria syndrome, also known as the 2p21 deletion syndrome. Several alternatively spliced transcript variants encoding either the same or different isoforms have been described for this gene.

抗原: Fusion protein of human PREPL

经过测试的应用: ELISA, WB, IHC

推荐稀释比: IHC: 50-200;WB: 500-2000;ELISA: 5000-10000

种属反应性: Rabbit

克隆性: Rabbit Polyclonal

亚型: Immunogen-specific rabbit IgG

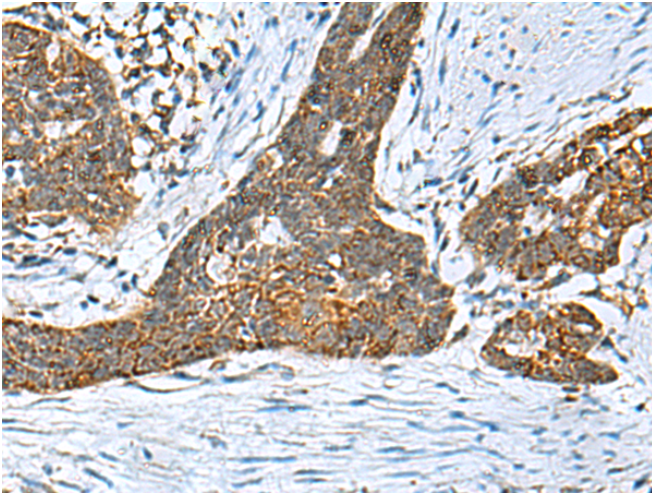
纯化: Antigen affinity purification

种属反应性: Human, Mouse, Rat

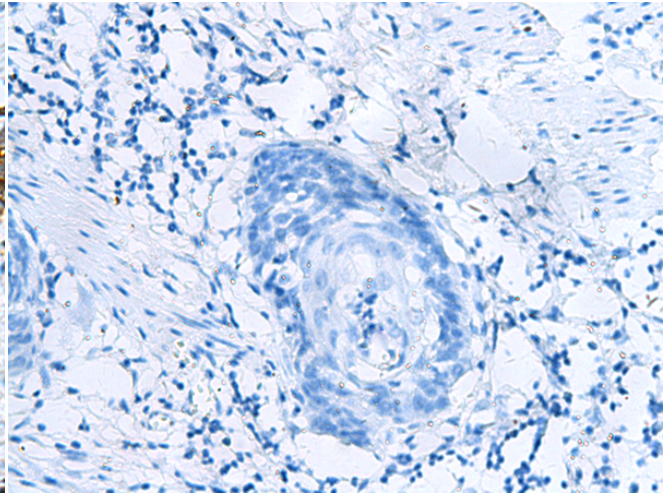
成分: PBS (without Mg²⁺ and Ca²⁺), pH 7.4, 150 mM NaCl, 0.05% Sodium Azide and 40% glycerol

研究领域: Cell Biology

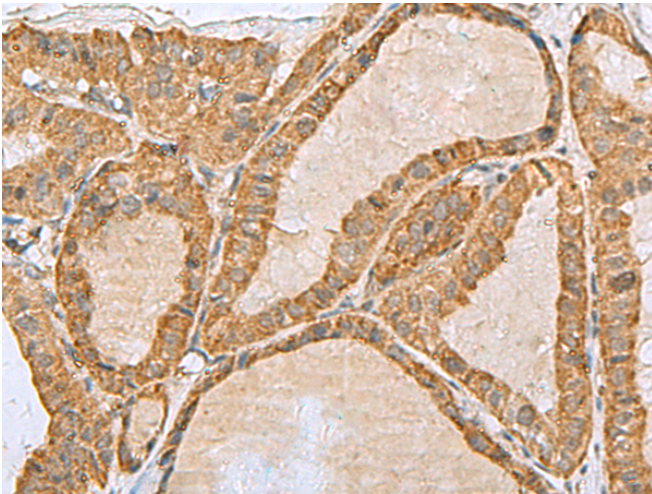
储存和运输: Store at -20°C. Avoid repeated freezing and thawing



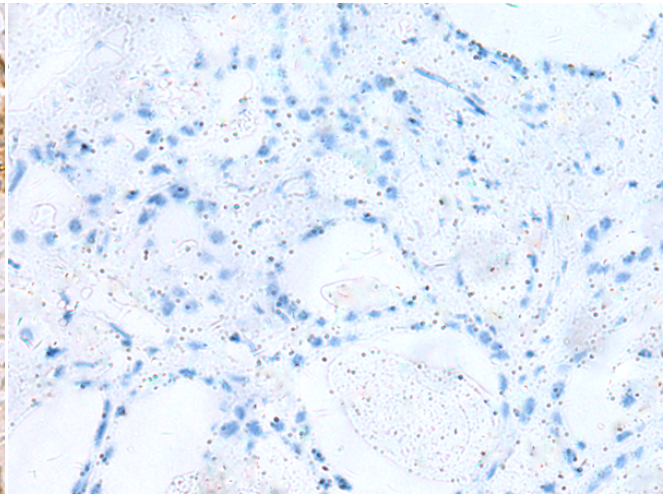
Immunohistochemistry analysis of paraffin embedded Human esophagus cancer tissue using 219280(PREPL Antibody) at a dilution of 1/55(Cytoplasm).



In comparison with the IHC on the left, the same paraffin-embedded Human esophagus cancer tissue is first treated with the fusion protein and then with 219280(Anti-PREPL Antibody) at dilution 1/55.



The image on the left is immunohistochemistry of paraffin-embedded Human thyroid cancer tissue using 219280(Anti-PREPL Antibody) at a dilution of 1/55.



In comparison with the IHC on the left, the same paraffin-embedded Human thyroid cancer tissue is first treated with fusion protein and then with D226197(Anti-PREPL Antibody) at dilution 1/55.

kDa

250—
130—
95—
72—
55—
36—



Gel: 6%SDS-PAGE, Lysate: 40 µg;
Lane: RAW264.7 cell lysate;
Primary antibody: 219280(PREPL Antibody) at dilution 1/800;
Secondary antibody: HRP-conjugated Goat anti rabbit IgG at 1/5000 dilution;
Exposure time: 3 minutes



Product Description

Pioneering GTPase and Oncogene Product Development since 2010
