

PRELID3B RABBIT PAB

货号: S219244

产品全名: PRELID3B 兔多抗

基因符号: SLMO2; C20orf45; dJ543J19.5

UNIPROT ID: Q9Y3B1 (Gene Accession - BC010649)

背景: The function of this protein remains unknown.

抗原: Fusion protein of human PRELID3B

经过测试的应用: ELISA, IHC

推荐稀释比: IHC: 100-300; ELISA: 5000-10000

种属反应性: Rabbit

克隆性: Rabbit Polyclonal

亚型: Immunogen-specific rabbit IgG

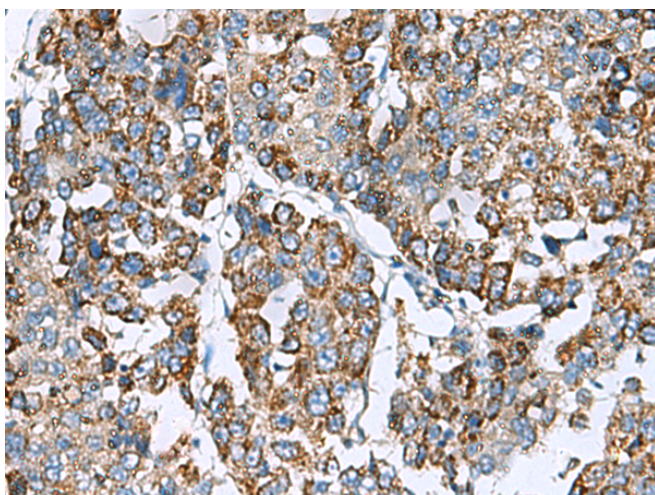
纯化: Antigen affinity purification

种属反应性: Human, Mouse, Rat

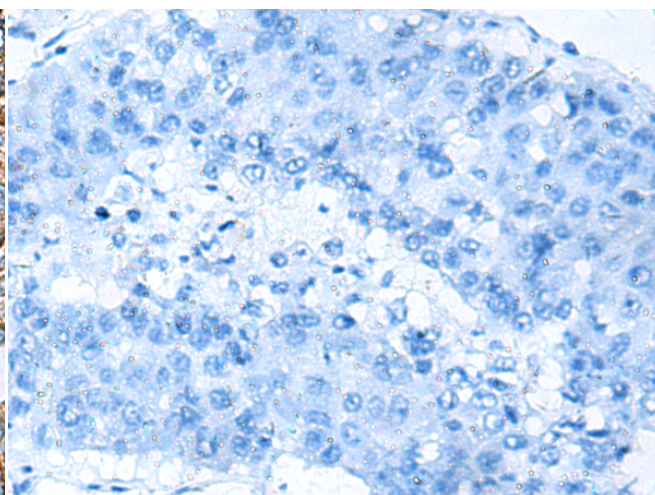
成分: PBS (without Mg²⁺ and Ca²⁺), pH 7.4, 150 mM NaCl, 0.05% Sodium Azide and 40% glycerol

研究领域: Cell Biology

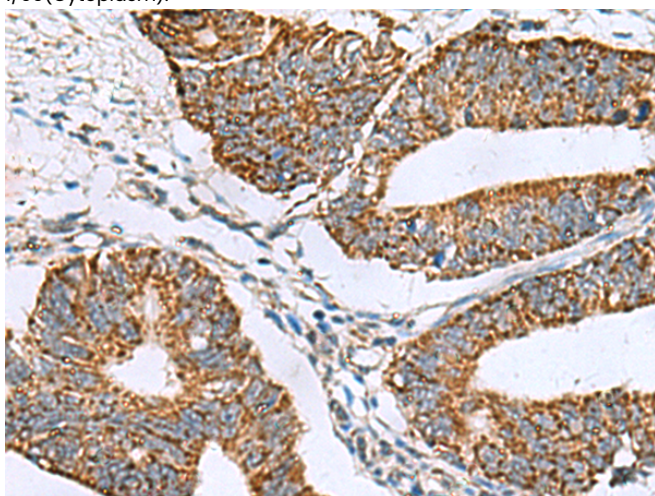
储存和运输: Store at -20°C. Avoid repeated freezing and thawing



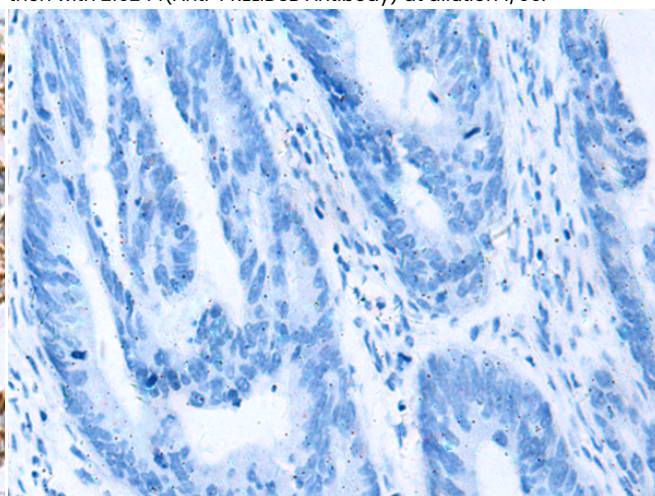
Immunohistochemistry analysis of paraffin embedded Human liver cancer tissue using 219244(PRELID3B Antibody) at a dilution of 1/90(Cytoplasm).



In comparison with the IHC on the left, the same paraffin-embedded Human liver cancer tissue is first treated with the fusion protein and then with 219244(Anti-PRELID3B Antibody) at dilution 1/90.



The image on the left is immunohistochemistry of paraffin-embedded Human colorectal cancer tissue using 219244(Anti-PRELID3B Antibody) at a dilution of 1/90.



In comparison with the IHC on the left, the same paraffin-embedded Human colorectal cancer tissue is first treated with fusion protein and then with D226122(Anti-PRELID3B Antibody) at dilution 1/90.



Product Description

Pioneering GTPase and Oncogene Product Development since 2010
