

## PREALBUMIN RABBIT MAB

**Cat.#:** N262755

**Product Name:** Anti-Prealbumin Rabbit Monoclonal Antibody

**Synonyms:** Prealbumin; TBPA; Amyloidosis I; Transthyretin

**UNIPROT ID:** P02766

**Background:** Thyroid hormone-binding protein. Probably transports thyroxine from the bloodstream to the brain.

**Immunogen:** A synthetic peptide of human Prealbumin

**Applications:** WB,IHC-P,IP

**Recommended Dilutions:** WB: 1/500-1/1000 IHC: 1/50-1/100 IP: 1/20

**Host Species:** Rabbit

**Clonality:** Rabbit Monoclonal

**Clone ID:** R05-7D9

**MW:** Calculated MW: 16 kDa; Observed MW: 16 kDa

**Isotype:** IgG

**Purification:** Affinity Purified

**Species Reactivity:** Human

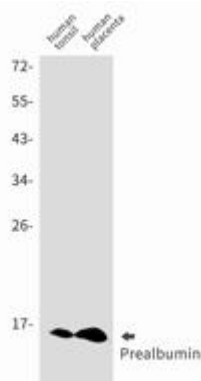
**Conjugation:** Unconjugated

**Modification:** Unmodified

**Constituents:** PBS (without Mg<sup>2+</sup> and Ca<sup>2+</sup>), pH 7.3 containing 50% glycerol, 0.5% BSA and 0.02% sodium azide

**Research Areas:** Neuroscience

**Storage & Shipping:** Store at -20°C. Avoid repeated freezing and thawing



Western blot analysis of Prealbumin in Human tonsil, Human placenta lysates using Prealbumin antibody.



# Product Description

Pioneering GTPase and Oncogene Product Development since 2010

---