

## PREALBUMIN (1F6) MOUSE MAB

货号: N261345

产品全名: Prealbumin (1F6) 小鼠单抗

基因符号 Prealbumin; TBPA; Amyloidosis I; Transthyretin

**UNIPROT ID:** P02766

背景: Thyroid hormone-binding protein. Probably transports thyroxine from the bloodstream to the brain.

抗原: Purified recombinant protein expressed in E.coli.

经过测试的应用: WB,IHC-P

推荐稀释比: WB: 1/500-1/1000 IHC: 1/50-1/100

种属反应性: Mouse

克隆性: Mouse Monoclonal

克隆编号: 1F6-9A9-6A5

分子量: Calculated MW: 16 kDa; Observed MW: 16 kDa

亚型: IgG1

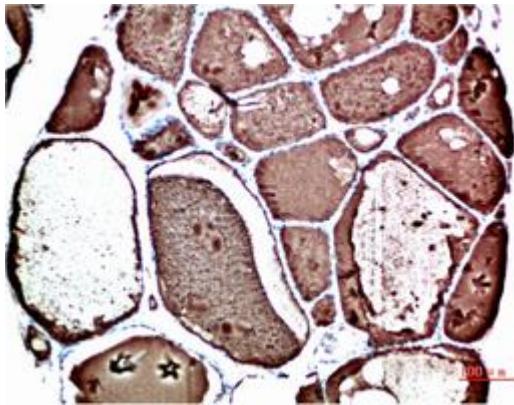
纯化: Affinity Purified

种属反应性: Human

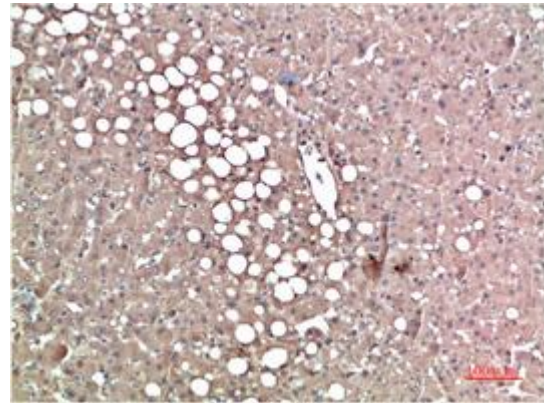
成分: PBS (without Mg<sup>2+</sup> and Ca<sup>2+</sup>), pH 7.3 containing 50% glycerol, 0.5% BSA and 0.02% sodium azide

研究领域: Neuroscience

储存和运输: Store at -20°C. Avoid repeated freezing and thawing



Immunohistochemical analysis of paraffin-embedded Human tonsils using Prealbumin (1F6) antibody. High-pressure and temperature Sodium Citrate pH 6.0 was used for antigen retrieval.



Immunohistochemistry analysis of paraffin-embedded Human Liver Carcinoma Tissue using Prealbumin (1F6) antibody. High-pressure and temperature Sodium Citrate pH 6.0 was used for antigen retrieval.



Western blot analysis of Prealbumin (1F6) in Hela, Jurkat, mouse brain, MOLT4, Human serum lysates using Prealbumin (1F6) antibody