

PRAS40 RABBIT MAB

货号: N263506

产品全名: PRAS40 兔单克隆抗体

基因符号 AKT1S1; PRAS40; Proline-rich AKT1 substrate 1; 40 kDa proline-rich AKT substrate

UNIPROT ID: Q96B36

背景: PRAS40 interacts with Raptor in mTOR complex 1 (mTORC1) in insulin-deprived cells and inhibits the activation of the mTORC1 pathway mediated by the cell cycle protein Rheb. Phosphorylation of PRAS40 by Akt at Thr246 relieves PRAS40 inhibition of mTORC1. mTORC1 in turn phosphorylates PRAS40 at Ser183.

抗原: A synthetic peptide of human PRAS40

经过测试的应用: WB,IP

推荐稀释比: WB: 1/500-1/1000 IP: 1/20

种属反应性: Rabbit

克隆性: Rabbit Monoclonal

克隆编号: R05-3A5

分子量: Calculated MW: 27 kDa; Observed MW: 40 kDa

亚型: IgG

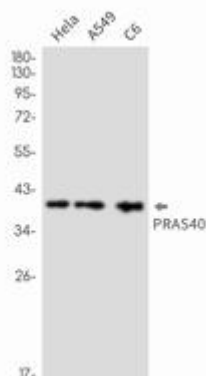
纯化: Affinity Purified

种属反应性: Human,Rat

成分: PBS (without Mg²⁺ and Ca²⁺), pH 7.3 containing 50% glycerol, 0.5% BSA and 0.02% sodium azide

研究领域: Cell Biology

储存和运输: Store at -20°C. Avoid repeated freezing and thawing



Western blot analysis of PRAS40 in HeLa, A549, C6 lysates using PRAS40 antibody.



Product Description

Pioneering GTPase and Oncogene Product Development since 2010
