

PRAF2 RABBIT PAB

货号: S220868

产品全名: PRAF2 兔多抗

基因符号 JM4

UNIPROT ID: O60831 (Gene Accession - NP_009144)

背景: JM4 (Jena-Muenchen 4), also known as PRAF2 (PRA1 domain family, member 2), is a 178 amino acid endosomal multi-pass membrane protein involved in vesicular trafficking and Endoplasmic reticulum/Golgi transport. As a member of the PRA1 family, JM4 contains four putative transmembrane (TM) domains, interacts with the CC chemokine receptor 5 (CCR5) and colocalizes with Calnexin in the ER and mannose 6-phosphate receptor (CD-MPR) in the Golgi apparatus.

抗原: Synthetic peptide of human PRAF2

经过测试的应用: ELISA, IHC

推荐稀释比: IHC: 25-100; ELISA: 1000-2000

种属反应性: Rabbit

克隆性: Rabbit Polyclonal

亚型: Immunogen-specific rabbit IgG

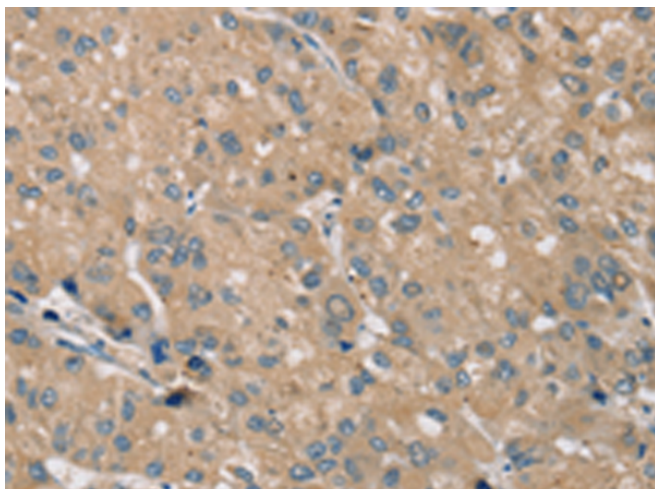
纯化: Antigen affinity purification

种属反应性: Human, Mouse

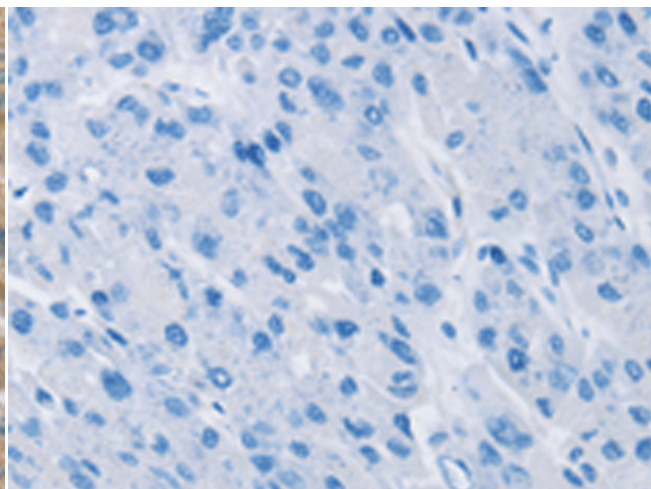
成分: PBS (without Mg²⁺ and Ca²⁺), pH 7.4, 150 mM NaCl, 0.05% Sodium Azide and 40% glycerol

研究领域: Signal Transduction

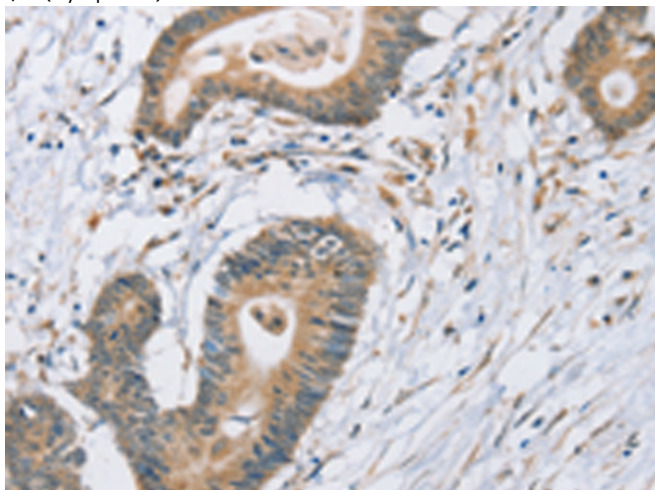
储存和运输: Store at -20°C. Avoid repeated freezing and thawing



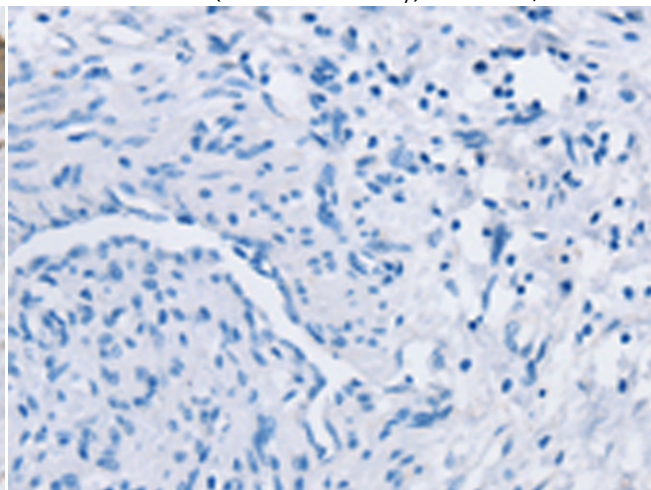
Immunohistochemistry analysis of paraffin embedded Human liver cancer tissue using 220868(PRAF2 Antibody) at a dilution of 1/35(Cytoplasm).



In comparison with the IHC on the left, the same paraffin-embedded Human liver cancer tissue is first treated with the synthetic peptide and then with 220868(Anti-PRAF2 Antibody) at dilution 1/35.



The image on the left is immunohistochemistry of paraffin-embedded Human colon cancer tissue using 220868(Anti-PRAF2 Antibody) at a dilution of 1/35.



In comparison with the IHC on the left, the same paraffin-embedded Human colon cancer tissue is first treated with synthetic peptide and then with D262146(Anti-PRAF2 Antibody) at dilution 1/35.



Product Description

Pioneering GTPase and Oncogene Product Development since 2010
