

PPP2R5E RABBIT MAB

货号: N262750

产品全名: PPP2R5E 兔单克隆抗体

基因符号 B56E; B56epsilon

UNIPROT ID: Q16537

背景: The B regulatory subunit might modulate substrate selectivity and catalytic activity, and also might direct the localization of the catalytic enzyme to a particular subcellular compartment.

抗原: A synthetic peptide of human PPP2R5E

经过测试的应用: WB,IHC-F,IHC-P,ICC/IF,IP

推荐稀释比: WB: 1/500-1/1000 IHC: 1/50-1/100 IF: 1/50-1/200 IP: 1/20

种属反应性: Rabbit

克隆性: Rabbit Monoclonal

克隆编号: R06-6E2

分子量: Calculated MW: 55 kDa; Observed MW: 55 kDa

亚型: IgG

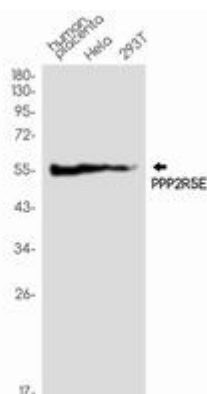
纯化: Affinity Purified

种属反应性: Human, Mouse and Rat

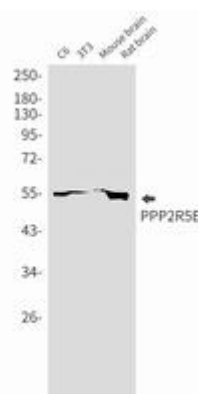
成分: PBS (without Mg²⁺ and Ca²⁺), pH 7.3 containing 50% glycerol, 0.5% BSA and 0.02% sodium azide

研究领域: Neuroscience

储存和运输: Store at -20°C. Avoid repeated freezing and thawing



Western blot analysis of PPP2R5E in Human placenta, Hela, 293T lysates using PPP2R5E antibody.



C6, 3T3, mouse brain, rat brain lysates using PPP2R5E antibody.



Product Description

Pioneering GTPase and Oncogene Product Development since 2010
