

PPP2R5E RABBIT MAB

货号: N263505

产品全名: PPP2R5E 兔单克隆抗体

基因符号 B56E; B56epsilon

UNIPROT ID: Q16537

背景: The B regulatory subunit might modulate substrate selectivity and catalytic activity, and also might direct the localization of the catalytic enzyme to a particular subcellular compartment.

抗原: A synthetic peptide of human PPP2R5E

经过测试的应用: WB, ICC/IF

推荐稀释比: WB: 1/500-1/1000 IF: 1/50-1/200

种属反应性: Rabbit

克隆性: Rabbit Monoclonal

克隆编号: R06-4E6

分子量: Calculated MW: 55 kDa; Observed MW: 55 kDa

亚型: IgG

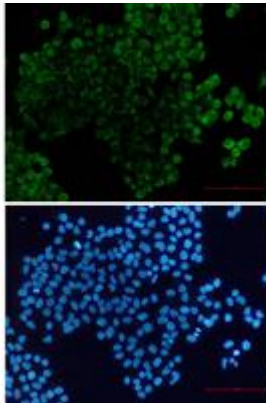
纯化: Affinity Purified

种属反应性: Human, Rat

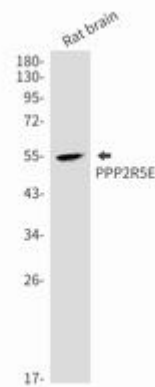
成分: PBS (without Mg²⁺ and Ca²⁺), pH 7.3 containing 50% glycerol, 0.5% BSA and 0.02% sodium azide

研究领域: Neuroscience

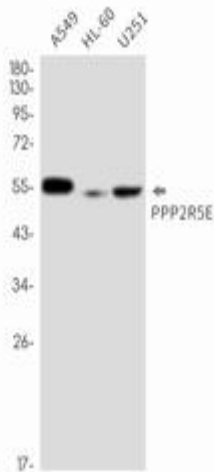
储存和运输: Store at -20°C. Avoid repeated freezing and thawing



Immunocytochemistry analysis of PPP2R5E (green) in HeLa using PPP2R5E antibody, and DAPI (blue)



Western blot analysis of PPP2R5E in rat brain lysates using PPP2R5E antibody.



Western blot analysis of PPP2R5E in A549, HL-60, U251 lysates using PPP2R5E antibody.