

## PPP2R1A RABBIT PAB

货号: S219157

产品全名: PPP2R1A 兔多抗

基因符号 MRD36; PP2AA; PR65A; PP2AAALPHA; PP2A-Aalpha

**UNIPROT ID:** P30153 (Gene Accession - BC001537)

**背景:** This gene encodes a constant regulatory subunit of protein phosphatase 2. Protein phosphatase 2 is one of the four major Ser/Thr phosphatases, and it is implicated in the negative control of cell growth and division. It consists of a common heteromeric core enzyme, which is composed of a catalytic subunit and a constant regulatory subunit, that associates with a variety of regulatory subunits. The constant regulatory subunit A serves as a scaffolding molecule to coordinate the assembly of the catalytic subunit and a variable regulatory B subunit. This gene encodes an alpha isoform of the constant regulatory subunit A. Alternatively spliced transcript variants have been described.

**抗原:** Fusion protein of human PPP2R1A

**经过测试的应用:** ELISA, WB, IHC

**推荐稀释比:** IHC: 70-350;WB: 1000-5000;ELISA: 5000-10000

**种属反应性:** Rabbit

**克隆性:** Rabbit Polyclonal

**亚型:** Immunogen-specific rabbit IgG

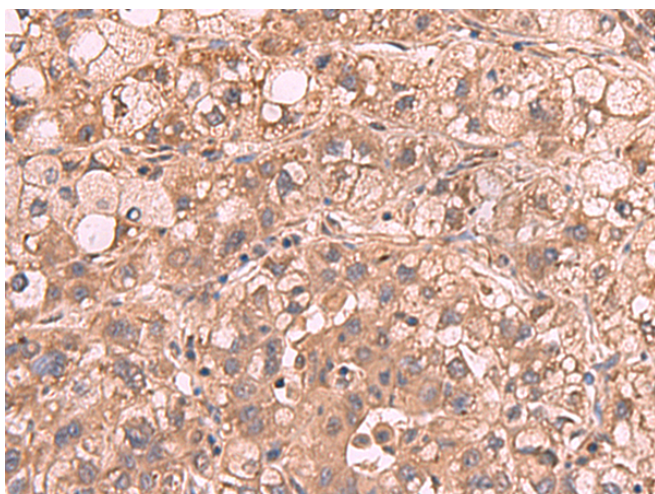
**纯化:** Antigen affinity purification

**种属反应性:** Human, Mouse

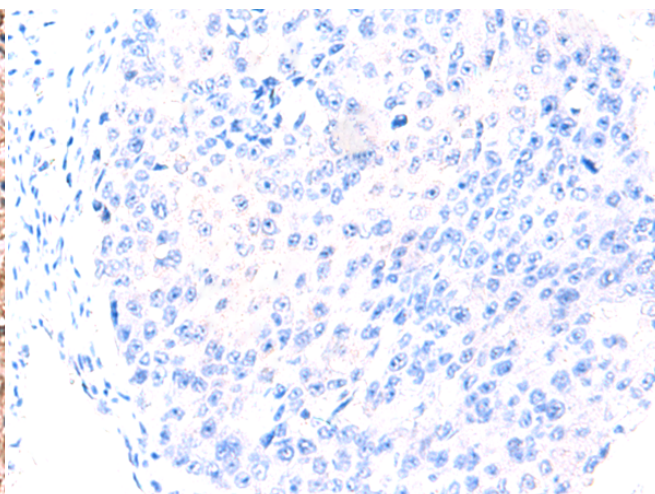
**成分:** PBS (without Mg<sup>2+</sup> and Ca<sup>2+</sup>), pH 7.4, 150 mM NaCl, 0.05% Sodium Azide and 40% glycerol

**研究领域:** Signal Transduction

**储存和运输:** Store at -20°C. Avoid repeated freezing and thawing



Immunohistochemistry analysis of paraffin embedded Human liver cancer tissue using 219157(PPP2R1A Antibody) at a dilution of 1/65(Cytoplasm).



In comparison with the IHC on the left, the same paraffin-embedded Human liver cancer tissue is first treated with the fusion protein and then with 219157(Anti-PPP2R1A Antibody) at dilution 1/65.

kDa

250

130

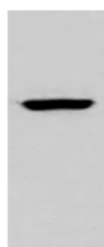
95

72

55

36

28



Gel: 8%SDS-PAGE, Lysate: 40 µg;

Lane: NIH/3T3 cell lysate;

Primary antibody: 219157(PPP2R1A Antibody) at dilution 1/850;

Secondary antibody: HRP-conjugated Goat anti rabbit IgG at 1/5000 dilution;

Exposure time: 3 seconds